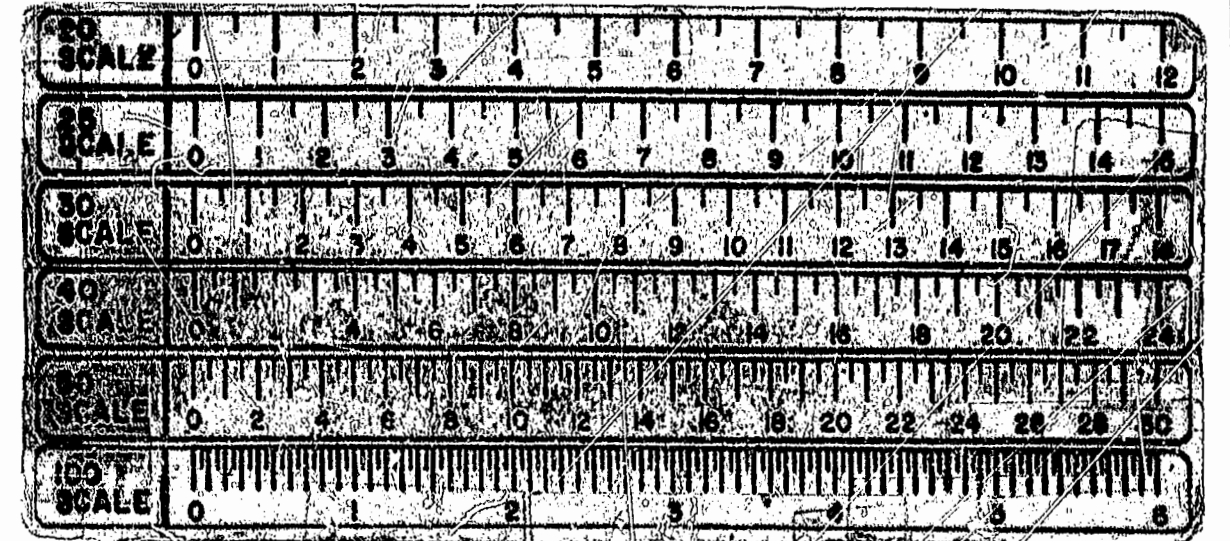
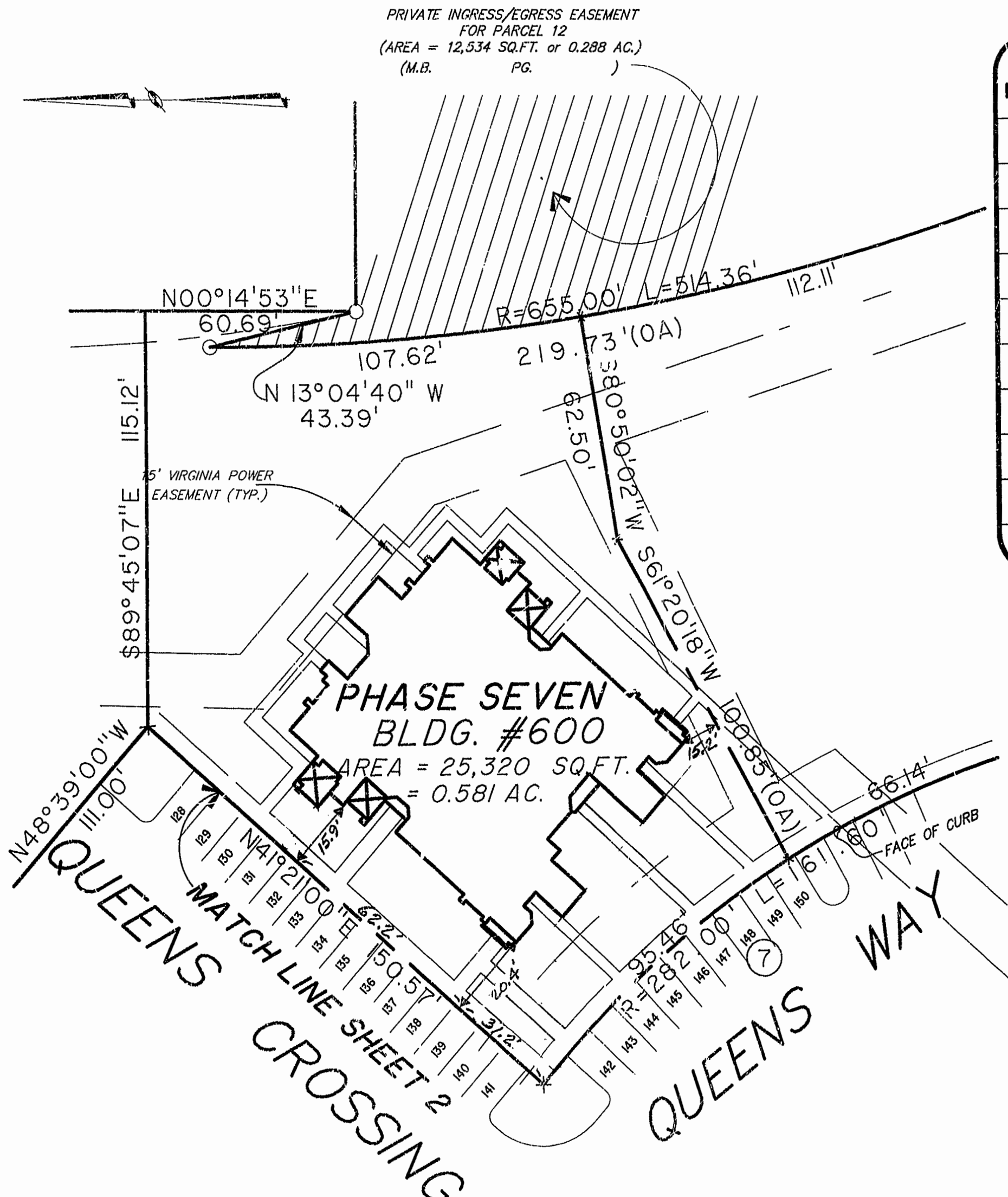


PRIVATE INGRESS/EGRESS EASEMENT  
FOR PARCEL 12  
(AREA = 12,534 SQ.FT. or 0.288 AC.)  
(M.B. PG. )

BLDG. NUMBER	UNIT NUMBER	UNIT TYPE	ADDRESS	PARKING SPACE NO.
600	6-601	AR	601 QUEENS WAY	144
600	6-602	B	602 QUEENS WAY	142
600	6-603	A	603 QUEENS CROSSING	141
600	6-604	E	604 QUEENS CROSSING	139
600	6-605	C	605 QUEENS CROSSING	137
600	6-606	D	606 QUEENS CROSSING	135
600	6-607	F	607 QUEENS CROSSING	133
600	6-608	DR	608 QUEENS CROSSING	131
600	6-609	CR	609 QUEENS WAY	149
600	6-610	ER	610 QUEENS WAY	146



**EXHIBIT # 1 PHASE SEVEN**  
LAFONTAINE CONDOMINIUMS  
AT  
WILLIAMSBURG CROSSING  
**PHASE SEVEN**

FOR  
UNIVERSITY SQUARE ASSOCIATES  
JAMESTOWN DISTRICT JAMES CITY COUNTY, VIRGINIA



Hassell & Folkes, P.C. Engineers Surveyors Planners Chesapeake, VA. 23320 (757)547-9531	SIZE C	CONTRACT NO	DISK/BOX 87/14	FILENAME LF-P7.DWG	REV.
SCALE: 1" = 25'	DATE: 08/13/97	SHEET 4 of 4			

PLAT RECORDED IN  
P.B. NO. 67 PAGE 29-30

RECORDED  
INDEXED  
8/22/97  
9/10/97  
Release Clerk