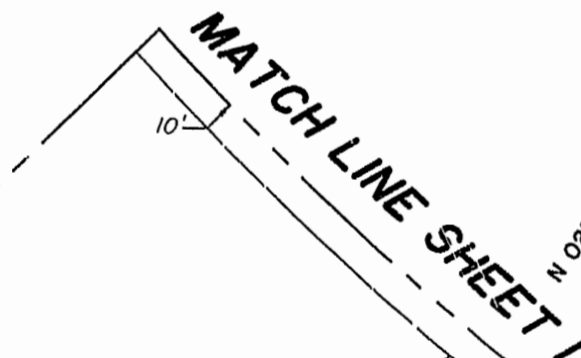


DETAIL N.T.S.

PARCEL 8
(P.B. 52, PG. 78)
AREA = 1.23 ACRES



PARCEL 9
(P.B. 52, PG. 78)

EASEMENT FOR
INGRESS/EGRESS
(D.B. 53, PG. 46)

JOHN TYLER HIGHWAY
STATE ROUTE NO. 5

CAROLINA BLVD.
(60' R/W)

CLAY RECORD
NO. 69-30



N/F
JAMES CITY COUNTY
(D.B. 180, PG. 465)

Hassell & Folkes, P.C. Engineers Surveyors Planners Chesapeake, VA. 23320 (757)547-9531	SIZE C	CONTRACT NO. C	DISK/BOX 87/14	FILENAME LF-P7.DWG	REV. 1
SCALE: 1" = 50'	DATE: 08/13/97	SHEET 2 of 4			

11118-1
Recorded
DOCUMENT # 970213643
Hiba & Ward

