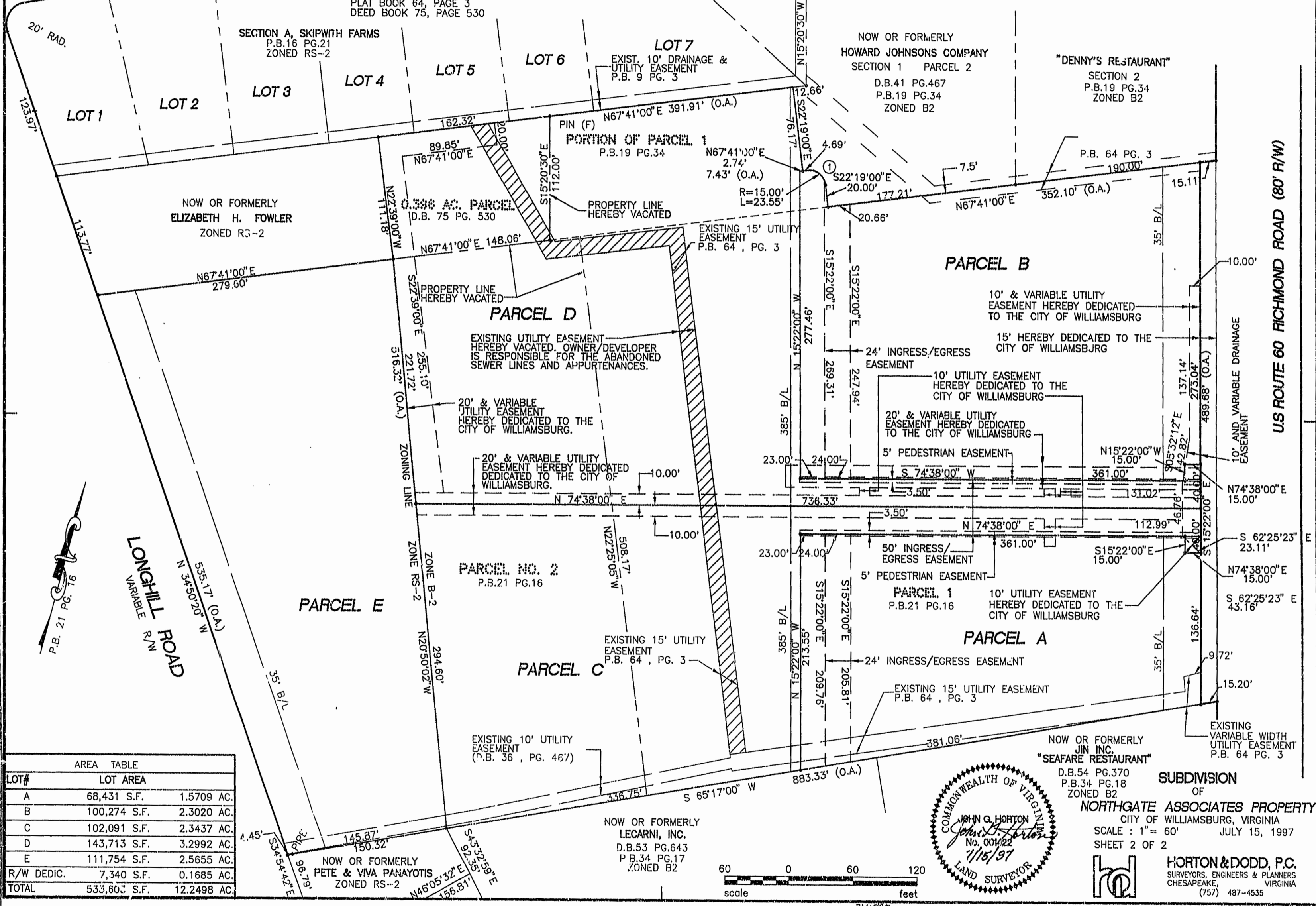


THOMAS NELSON LANE
50' R/W

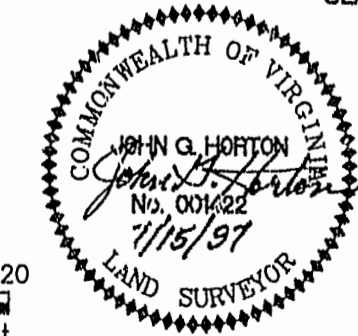
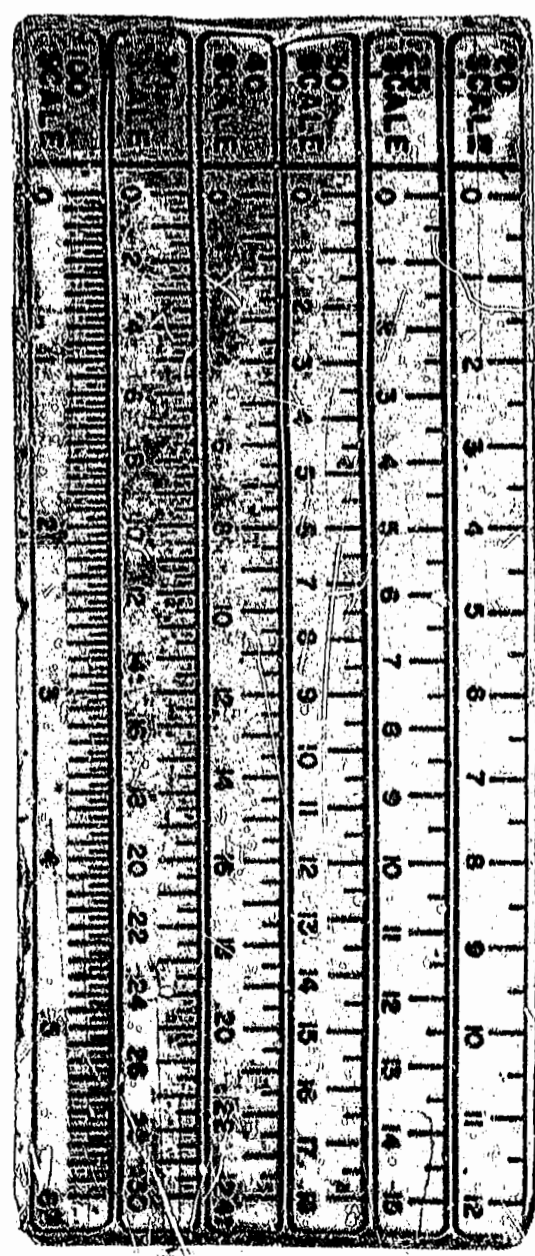
REFERENCES:
PARCEL 1 & PARCEL 2 - P.B. 21 PG. 3 (JAMES CITY CO.)
PORTION OF PARCEL 1 P.B. 19 PG. 34
0.396 ACRE PARCEL D.B. 75 PG. 530 (JAMES CITY CO.)
D.B. 65 PG. 52 (JAMES CITY CO.)
PLAT BOOK 21, PAGE 16
PLAT BOOK 64, PAGE 3
DEED BOOK 75, PAGE 530

CURVE TABLE

CURVE	RADIUS	LENGTH	TANGENT	CHORD	BEARING	DELTA
1	15.00'	23.56'	15.00'	21.20'	S67°19'00"E	90°00'00"



LOT#	LOT AREA	ACRES
A	68,431 S.F.	1.5709 AC.
B	100,274 S.F.	2.3020 AC.
C	102,091 S.F.	2.3437 AC.
D	143,713 S.F.	3.2992 AC.
E	111,754 S.F.	2.5655 AC.
R/W DEDIC.	7,340 S.F.	0.1685 AC.
TOTAL	533,603 S.F.	12.2498 AC.



SUBDIVISION
OF
NORTHGATE ASSOCIATES PROPERTY
CITY OF WILLIAMSBURG, VIRGINIA
SCALE: 1" = 60'
JULY 15, 1997
SHEET 2 OF 2
HORTON & DODD, P.C.
SURVEYORS, ENGINEERS & PLANNERS
CHESAPEAKE, VIRGINIA
(757) 487-4535

PLAT RECORDED IN
P.B. NO. 62, PAGE 14 + 15

3:48pm
Recorded 4 day of August 1997
DOCUMENT # 97 0000816
Debra S. ... Clerk
By Claudia ...