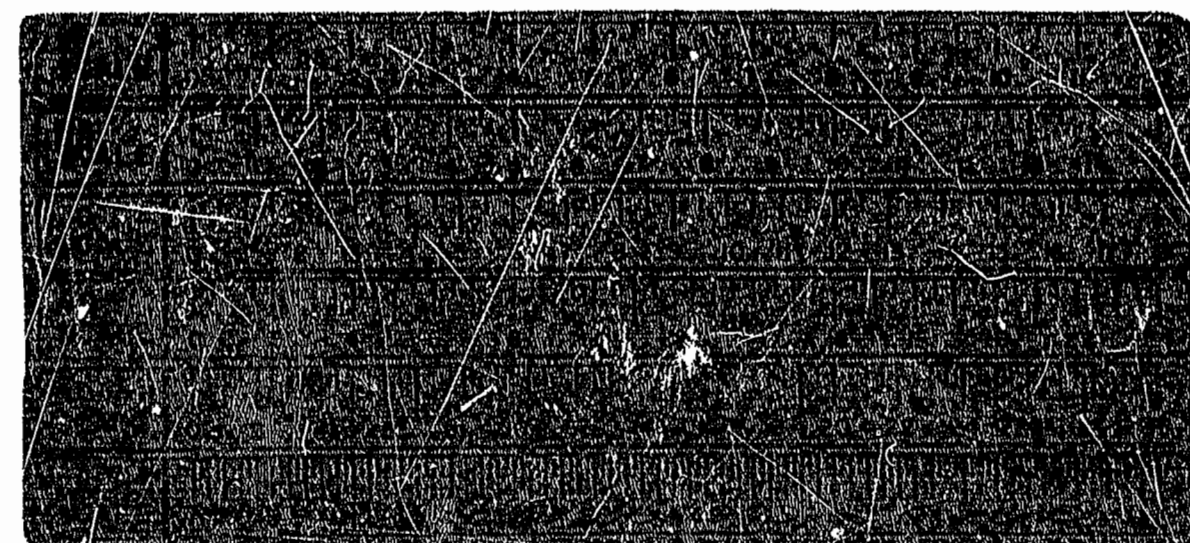
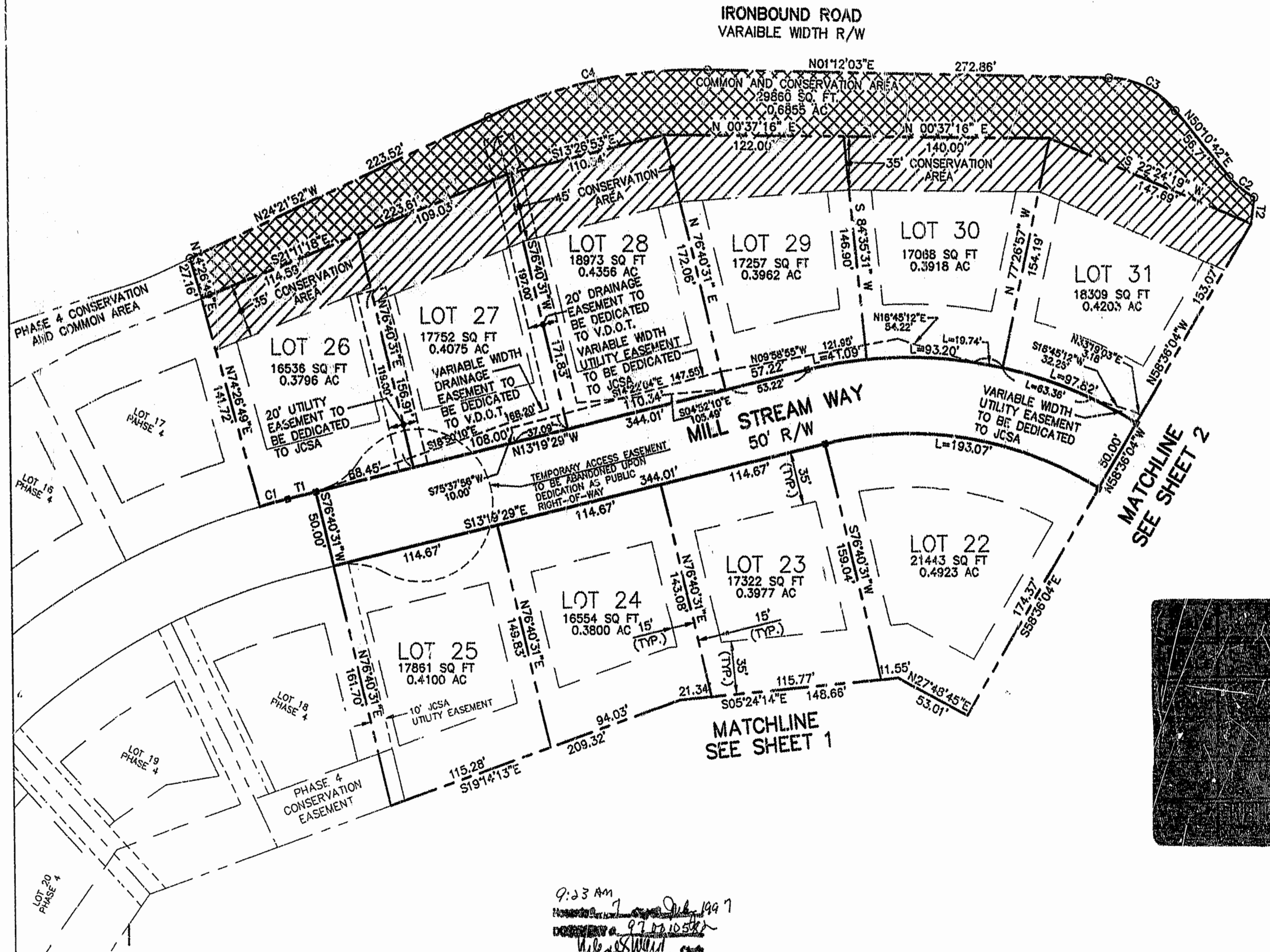


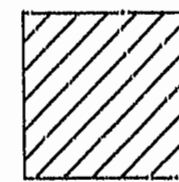
SHEET	CURVE	RADIUS	LENGTH	TANGENT	CHORD	BEARING	DELTA
SHEET 3	C1	502.72'	19.55'	9.78'	19.55'	S14°26'20"E	02°13'42"
SHEET 3	C2	55.00'	21.78'	11.04'	21.64'	N38°49'58"E	22°41'27"
SHEET 3	C3	60.00'	51.30'	27.34'	49.75'	S25°41'37"W	48°59'07"
SHEET 3	C4	345.00'	153.93'	78.27'	152.66'	S11°34'56"E	25°33'52"



LINE	DIRECTION	DISTANCE
T1	N13°19'29"W	20.00'
T2	N82°13'34"W	17.42'



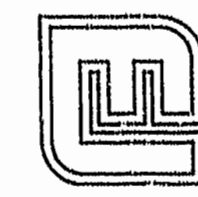
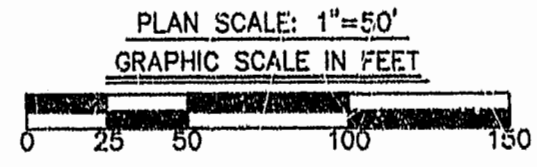
NOTE: ALL STREETS ARE HEREBY DEDICATED FOR PUBLIC PURPOSES.



CONSERVATION EASEMENT
 CONSERVATION EASEMENT HEREBY DEDICATED TO JAMES CITY COUNTY. NO CLEARING OR CONSTRUCTION PERMITTED.

9:23 AM
 7
 97 02 10 50
 116 08 11 11

PLAT RECORDED IN
 PG 66 PAGE 47-100



PLAT OF
SETTLERS MILL
 AT JAMESTOWN
 SECTION 5
 FOR
SETTLERS MILL, INC.
 BERKELEY DISTRICT
 JAMES CITY COUNTY, VIRGINIA
 4/30/97 SCALE: 1"=50'
 SHEET 3 OF 4

Langley and McDonald, P.C.
 Engineers - Surveyors - Planners
 Landscape Architects - Environmental Consultants
 VIRGINIA BEACH WILLIAMSBURG