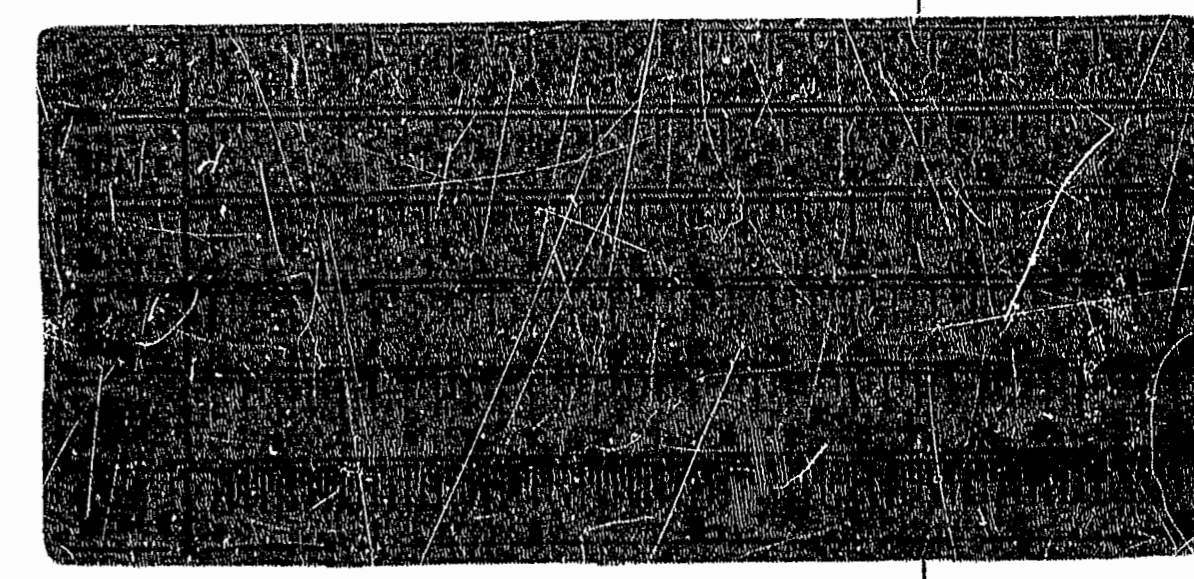
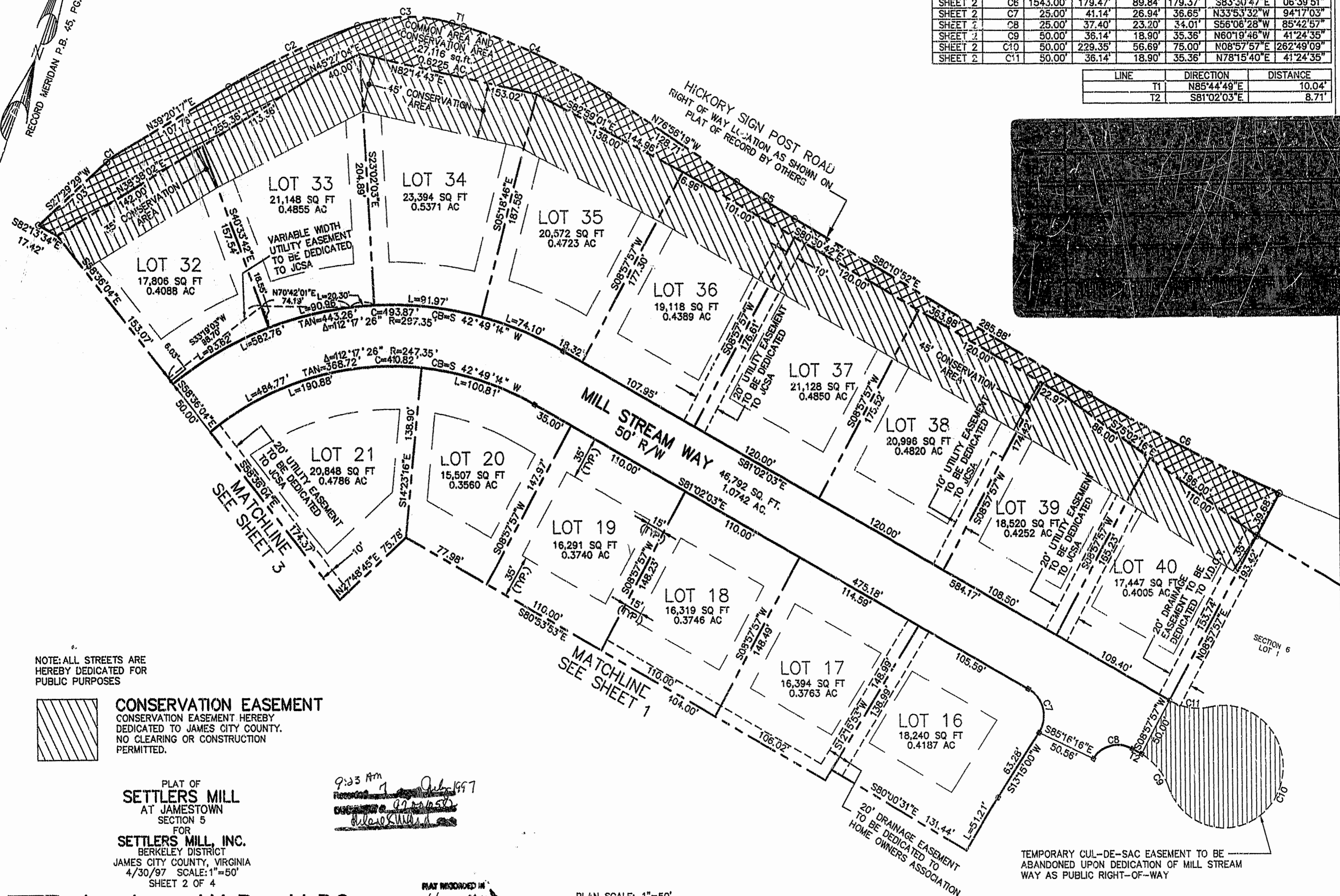
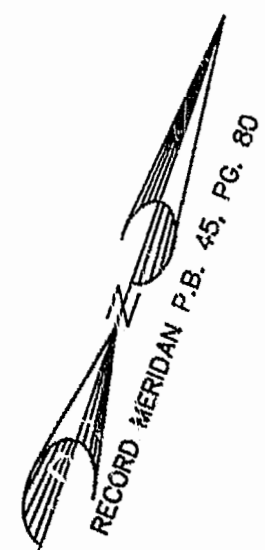


SHEET	CURVE	RADIUS	LENGTH	TANGENT	CHORD	BEARING	DELTA
SHEET 2	C1	60.00'	12.40'	6.22'	12.38'	S33°24'47"W	11°50'35"
SHEET 2	C2	585.00'	119.78'	60.10'	119.57'	S45°12'13"W	11°43'53"
SHEET 2	C3	134.48'	81.40'	41.99'	80.16'	S68°24'29"W	34°40'46"
SHEET 2	C4	445.00'	134.48'	67.76'	133.97'	N85°35'44"W	17°18'54"
SHEET 2	C5	1015.00'	57.44'	28.73'	57.43'	S78°33'35"E	03°14'32"
SHEET 2	C6	1543.00'	179.47'	89.84'	179.37'	S83°30'47"E	06°39'51"
SHEET 2	C7	25.00'	41.14'	26.94'	36.65'	N33°53'32"W	94°17'03"
SHEET 2	C8	25.00'	37.40'	23.20'	34.01'	S56°06'28"W	85°42'57"
SHEET 2	C9	50.00'	36.14'	18.90'	35.36'	N60°19'46"W	41°24'35"
SHEET 2	C10	50.00'	229.35'	56.69'	75.00'	N08°57'57"E	262°49'09"
SHEET 2	C11	50.00'	36.14'	18.90'	35.36'	N78°15'40"E	41°24'35"

LINE	DIRECTION	DISTANCE
T1	N85°44'49"E	10.04'
T2	S81°02'03"E	8.71'



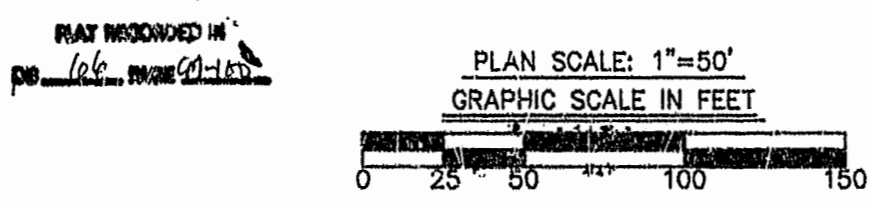
NOTE: ALL STREETS ARE HEREBY DEDICATED FOR PUBLIC PURPOSES

CONSERVATION EASEMENT
 CONSERVATION EASEMENT HEREBY DEDICATED TO JAMES CITY COUNTY. NO CLEARING OR CONSTRUCTION PERMITTED.

PLAT OF
SETTLERS MILL
 AT JAMESTOWN
 SECTION 5
 FOR
SETTLERS MILL, INC.
 BERKELEY DISTRICT
 JAMES CITY COUNTY, VIRGINIA
 4/30/97 SCALE: 1"=50'
 SHEET 2 OF 4

9:23 Am
 [Signature]
 [Signature]

Langley and McDonald, P.C.
 Engineers - Surveyors - Planners
 Landscape Architects - Environmental Consultants
 VIRGINIA BEACH WILLIAMSBURG



TEMPORARY CUL-DE-SAC EASEMENT TO BE ABANDONED UPON DEDICATION OF MILL STREAM WAY AS PUBLIC RIGHT-OF-WAY