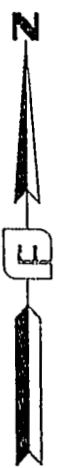


MATCHLINE SHEET 2



60 MILES TO I-64
ROUTE 30

C.L. OF POLE LINE EASEMENT TO
VIRGINIA ELECTRIC AND POWER COMPANY
DATED JULY 31, 1933, D.B. 27, PG. 304
C&P TELEPHONE COMPANY OF VIRGINIA LTD.
DATED MARCH 15, 1934, D.B. 28, PG. 256

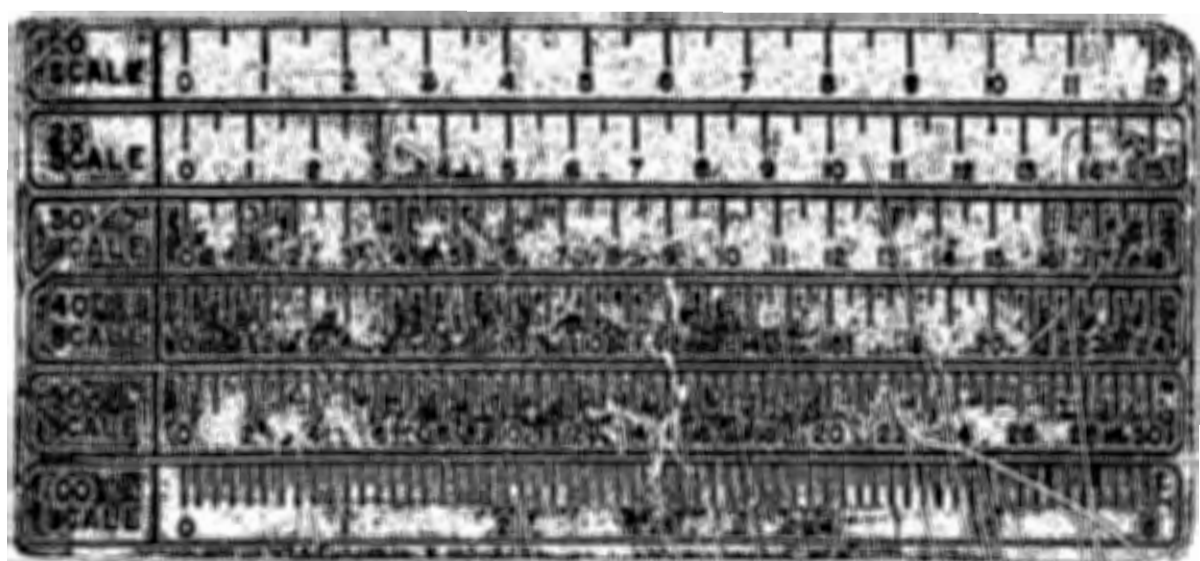
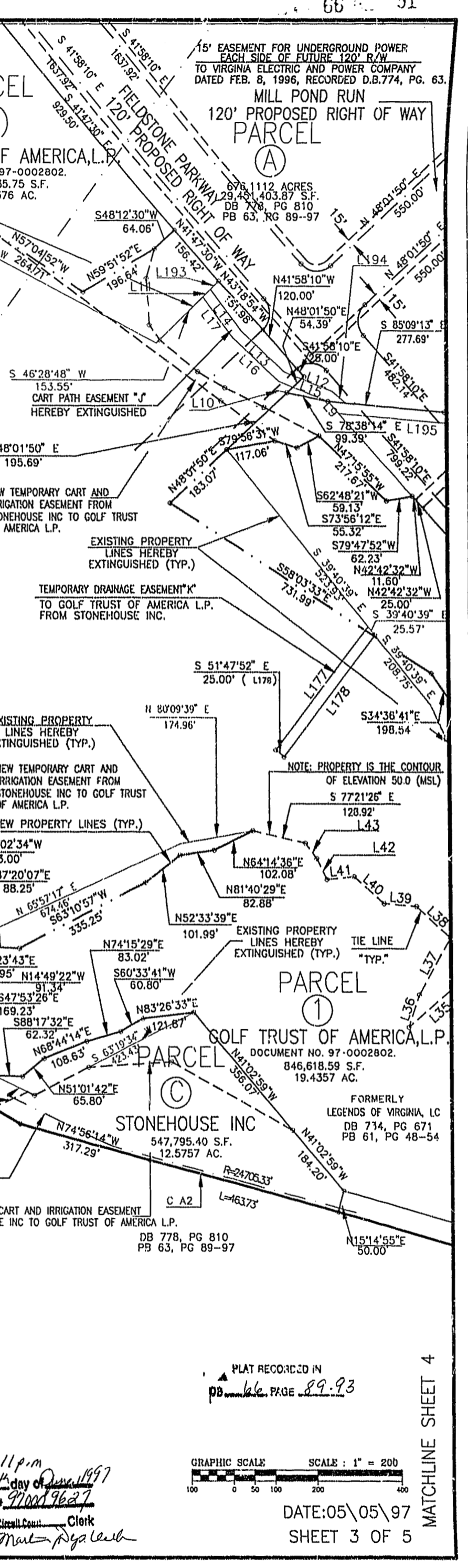
C.L. OF POLE LINE EASEMENT TO
VIRGINIA ELECTRIC AND POWER COMPANY
DATED AUG. 3, 1933, D.B. 27, PG. 302

C.L. OF POLE LINE EASEMENT TO
VIRGINIA ELECTRIC AND POWER COMPANY
DATED DEC. 1, 1948, D.B. 41, PG. 462
P.B. 41, PG 23 PLAT DATE JUNE 12, 1985

C.L. OF POLE LINE EASEMENT TO
VIRGINIA ELECTRIC AND POWER COMPANY
DATED AUG. 3, 1933, D.B. 27, PG. 300

15' EASEMENT FOR UNDERGROUND POWER
EACH SIDE OF FUTURE 120' R/W
TO VIRGINIA ELECTRIC AND POWER COMPANY
DATED FEB. 8, 1996, RECORDED D.B.774, PG. 63.

MILL POND RUN
120' PROPOSED RIGHT OF WAY



CURVE	RADIUS	LENGTH	TANGENT	CHORD	BEARING	DELTA
C A1	1809.86'	708.64'	358.92'	704.12'	N43°15'21"W	22°26'02"
C A2	24705.33'	1675.70'	838.17'	1673.38'	S73°53'01"E	03°53'10"

PLAT RECORDED IN
PB 66, PAGE 89.93

GRAPHIC SCALE SCALE: 1" = 200'
100 0 50 100 200 400

1:11 p.m.
Recorded 20th day of June 1997
DOCUMENT # 920019627
Helena S. Ward, Clerk of Circuit Court
By: Dawn Q. M... Reg. Leeb

DATE: 05/05/97
SHEET 3 OF 5

MATCHLINE SHEET 4