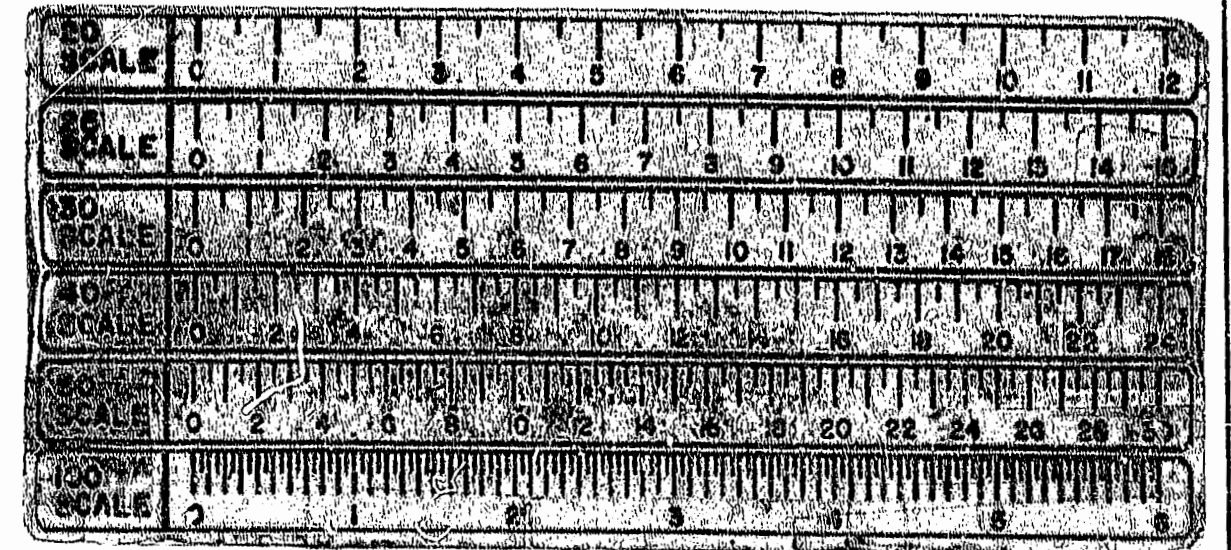
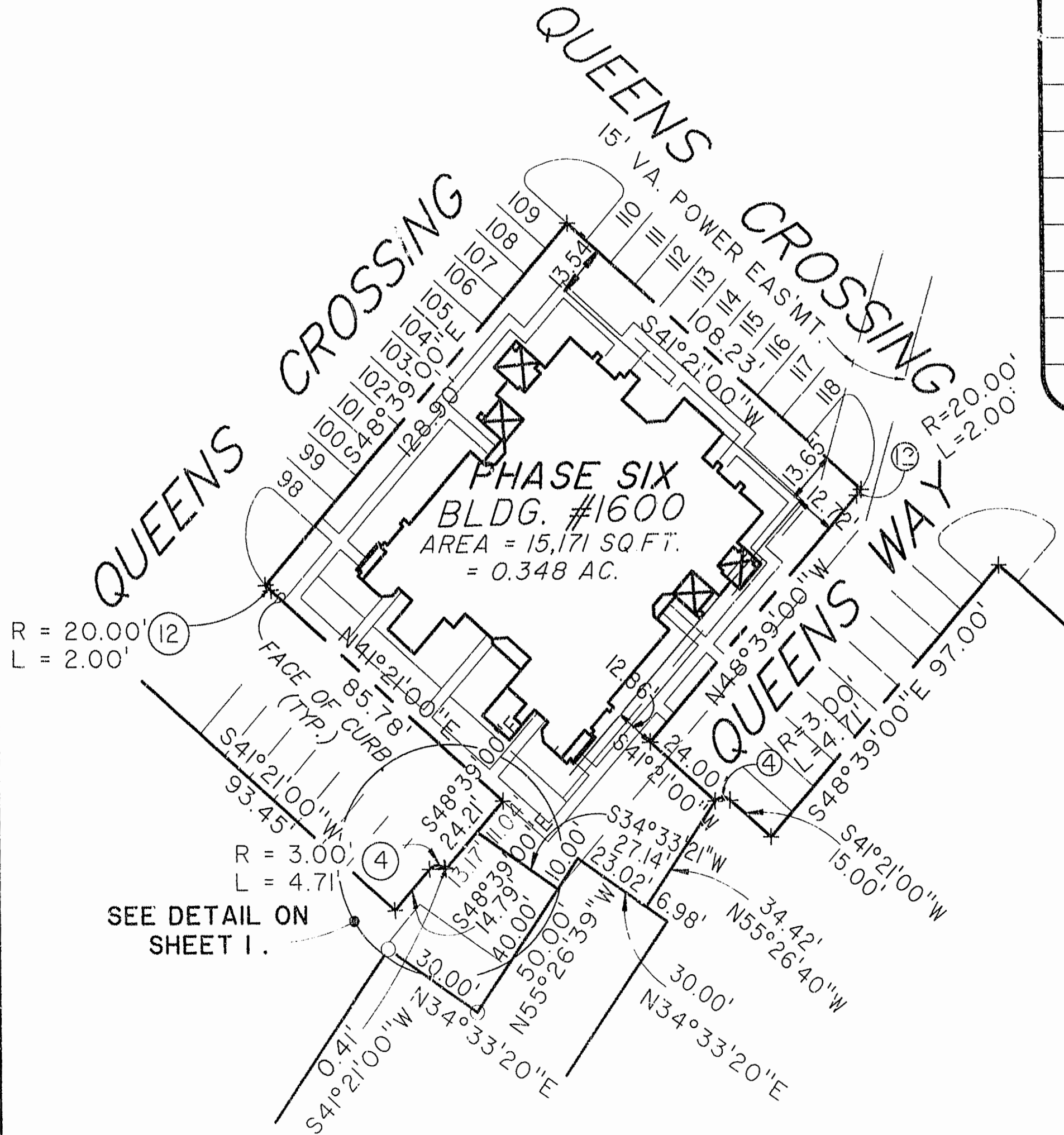
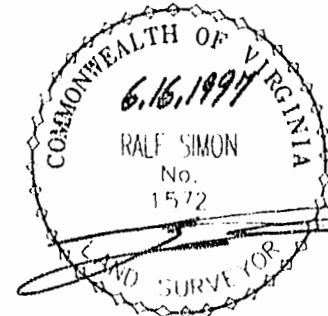


BLDG. NUMBER	UNIT NUMBER	UNIT TYPE	ADDRESS	PARKING SPACE NO.
1600	16-1601	AR	1601 QUEENS WAY	99
1600	16-1602	B	1602 QUEENS WAY	101
1600	16-1603	A	1603 QUEENS WAY	103
1600	16-1604	E	1604 QUEENS CROSSING	105
1600	16-1605	C	1605 QUEENS CROSSING	107
1600	16-1606	D	1606 QUEENS CROSSING	110
1600	16-1607	F	1607 QUEENS CROSSING	112
1600	16-1608	DR	1608 QUEENS CROSSING	114
1600	16-1609	CR	1609 QUEENS WAY	116
1600	16-1610	ER	1610 QUEENS WAY	118



**EXHIBIT # 1 PHASE SIX**  
 LAFONTAINE CONDOMINIUMS  
 AT  
 WILLIAMSBURG CROSSING  
**PHASE SIX**  
 FOR

UNIVERSITY SQUARE ASSOCIATES  
 JAMESTOWN DISTRICT JAMES CITY COUNTY, VIRGINIA



Hassell & Folkes, P.C. Engineers Surveyors Planners Chesapeake, VA 23320 (757)547-9531	SIZE C	CONTRACT NO	DISK/BOX 60/14	FILENAME LF-P6.DWG	REV.
SCALE: 25'	DATE: 05/30/97	SHEET 4 of 4			

PLAT RECORDED IN  
 PB 166 PAGE 16-19

Recorded 23 day of June 1997  
 DOCUMENT # 97 172 918  
 1600 S. Ward, Clerk of Circuit Court  
 R. J. Damm Clerk

C:\ACAD\14\PLAN\14-166.MXD JUN 15 10 24 37 1997