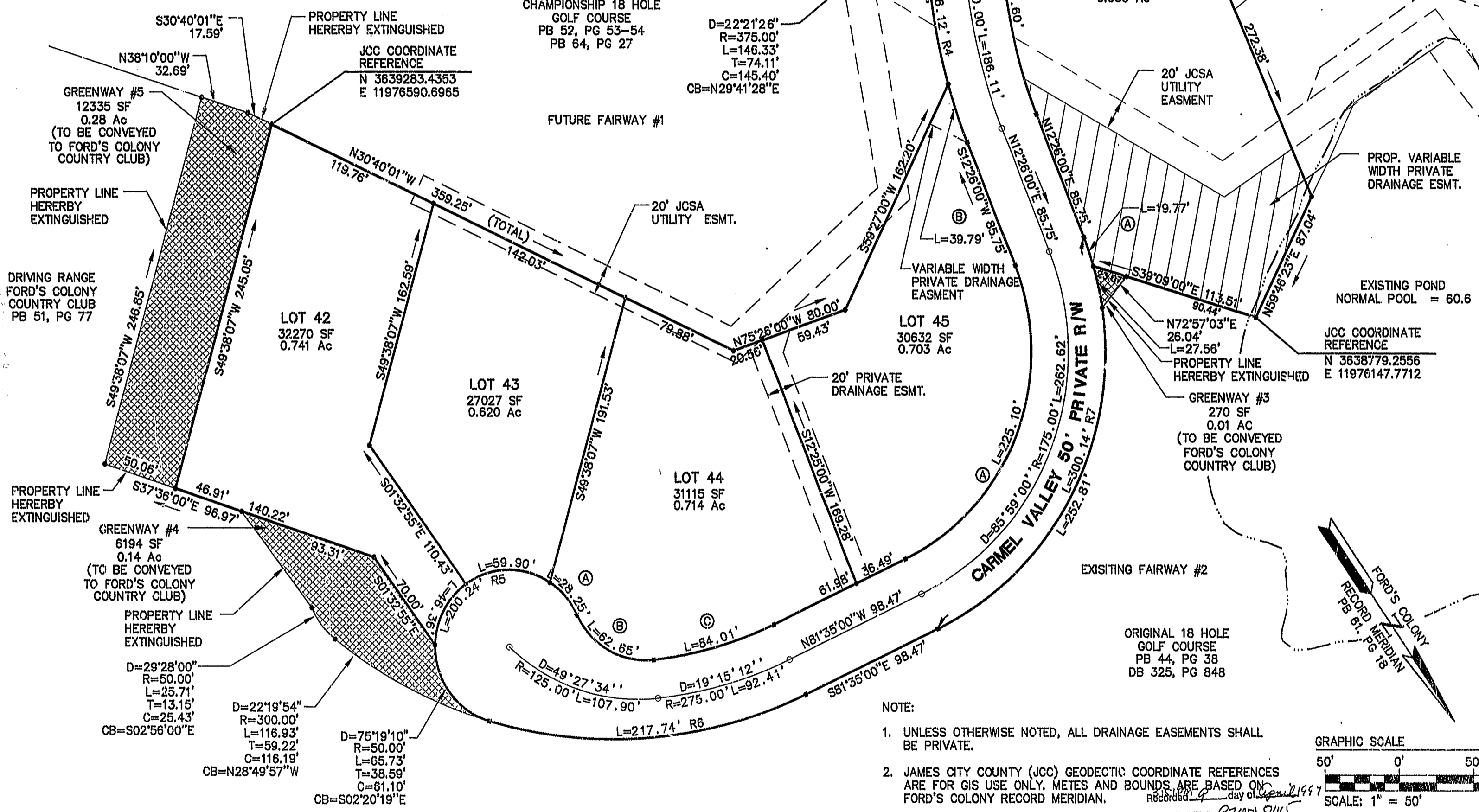
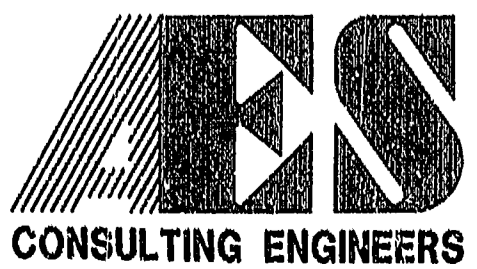


NUMBER	DELTA	RADIUS	LENGTH	TANGENT	CHORD	CHORD BEARING
42	53°07'48"	50.00	46.36	25.00	44.72	S61°53'10"W
43	68°38'30"	50.00	59.90	34.13	56.38	N57°13'40"W
44A	32°22'02"	50.00	28.25	14.51	27.87	N06°43'25"W
44B	71°47'24"	50.00	62.65	36.19	58.63	N26°26'06"W
44C	19°15'12"	250.00	84.01	42.40	83.61	N71°57'24"W
45A	85°59'00"	150.00	225.10	139.84	204.57	S55°28'30"W
45B	06°04'45"	375.00	39.79	19.91	39.77	S15°28'22"W
46A	05°39'52"	200.00	19.77	9.89	19.76	S15°15'56"W
46B	27°47'04"	325.00	157.60	80.78	156.06	S26°19'32"W
46C	79°45'25"	25.00	34.80	20.89	32.06	S80°05'46"W
46D	22°53'53"	200.00	80.28	40.69	79.74	N71°31'28"W



04.03.97 -08.17 FC170P05



5248 Olde Towne Road, Suite 1
 Williamsburg, Virginia 23188
 (804) 253-0040
 Fax (804) 220-8994

PLAT OF CORRECTION
**FORD'S COLONY
 AT WILLIAMSBURG**
 SECTION XVII, PART C
 LOTS 36 - 46
 POWHATAN DISTRICT JAMES CITY COUNTY VIRGINIA



No.	DATE	REVISION / COMMENT / NOTE	BY

Designed CAH	Drawn KEG
Scale 1"=50'	Date 4/8/97
Project No. 5652-17	
Drawing No. 5 OF 7	

NOTE:
 1. UNLESS OTHERWISE NOTED, ALL DRAINAGE EASEMENTS SHALL BE PRIVATE.
 2. JAMES CITY COUNTY (JCC) GEODETIC COORDINATE REFERENCES ARE FOR GIS USE ONLY. METES AND BOUNDS ARE BASED ON FORD'S COLONY RECORD MERIDIAN.
 Recorded 4 day of April 1997
 Document # 97-00345
Delores S. Weir Clerk
By Charles S. Weir, Jr. Dgo Clerk

