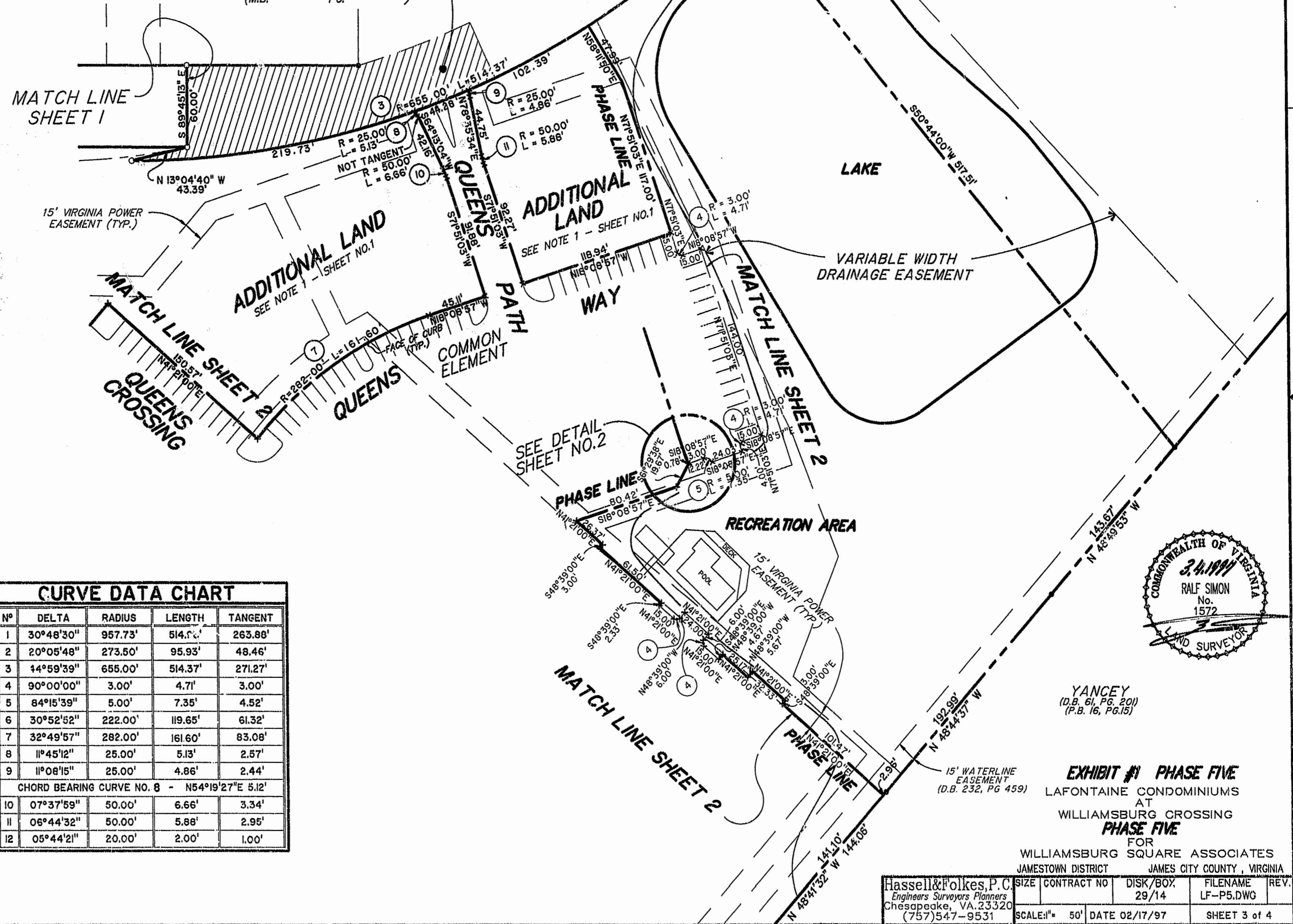


PARCEL 1A
(P.B. 49, PG. 69)

PRIVATE INGRESS/EGRESS EASEMENT
FOR PARCEL 12
(AREA = 12,534 SQ.FT. or 0.288 AC.)
(M.B. PG.)



CURVE DATA CHART				
Nº	DELTA	RADIUS	LENGTH	TANGENT
1	30°48'30"	957.73'	514.56'	263.88'
2	20°05'48"	273.50'	95.93'	48.46'
3	14°59'39"	655.00'	514.37'	271.27'
4	90°00'00"	3.00'	4.71'	3.00'
5	84°15'39"	5.00'	7.35'	4.52'
6	30°52'52"	222.00'	119.65'	61.32'
7	32°49'57"	282.00'	161.60'	83.08'
8	11°45'12"	25.00'	5.13'	2.57'
9	11°08'15"	25.00'	4.86'	2.44'
CHORD BEARING CURVE NO. 8 - N54°19'27"E 5.12'				
10	07°37'59"	50.00'	6.66'	3.34'
11	06°44'32"	50.00'	5.88'	2.95'
12	05°44'21"	20.00'	2.00'	1.00'



YANCEY
(D.B. 51, PG. 201)
(P.B. 16, PG.15)

EXHIBIT #1 PHASE FIVE
LAFONTAINE CONDOMINIUMS
AT
WILLIAMSBURG CROSSING
PHASE FIVE
FOR
WILLIAMSBURG SQUARE ASSOCIATES
JAMESTOWN DISTRICT JAMES CITY COUNTY, VIRGINIA

Hassell & Polkes, P.C. Engineers Surveyors Planners Chesapeake, VA. 23320 (757) 547-9531	SIZE CONTRACT NO	DISK/BOX 29/14	FILENAME LF-P5.DWG	REV.
SCALE: 1" = 50'	DATE 02/17/97	SHEET 3 of 4		

Recorded 24 Nov 1997
DOCUMENT # 970204318
Clerk of Court

PLAT RECORD
P.B. NO. 16 PG. 29