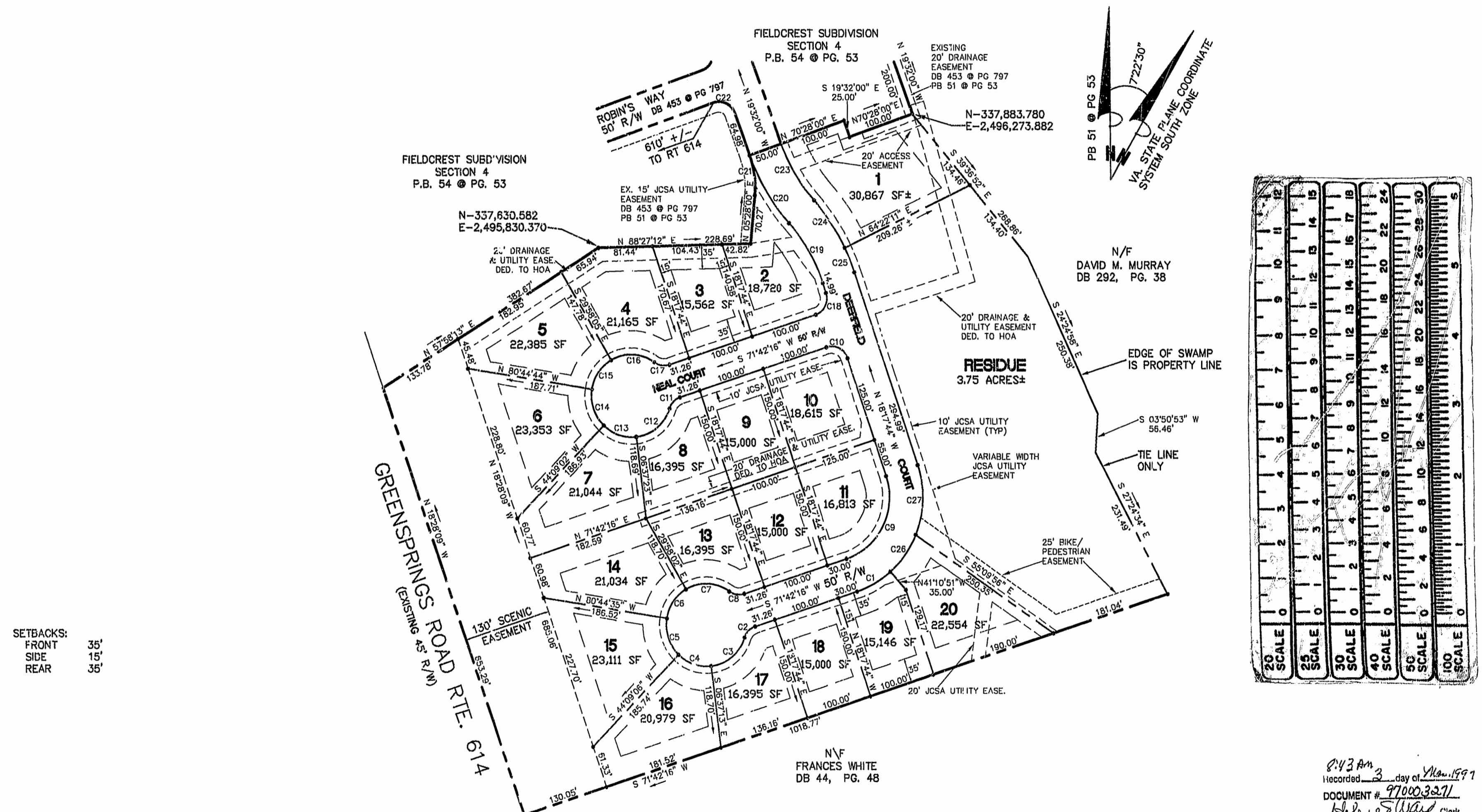


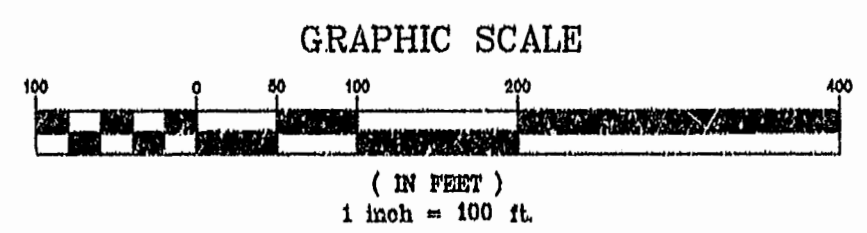
# FIELDCREST SUBDIVISION SECTION V

JAMES CITY COUNTY, VIRGINIA

DATE: OCTOBER 31, 1996 SCALE: 1"=100'

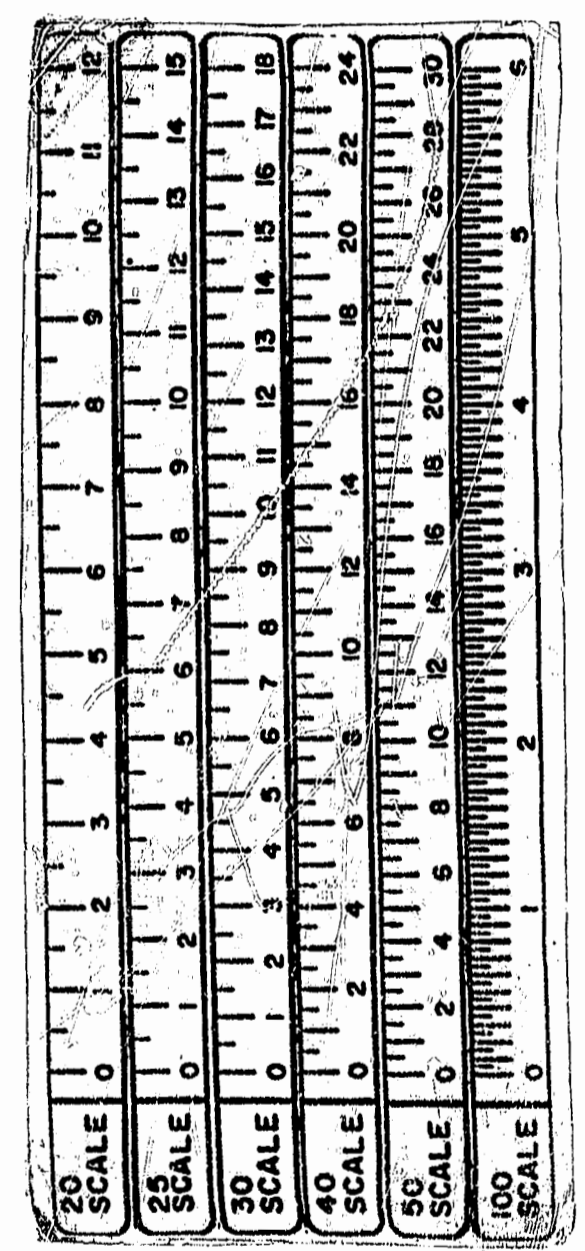


SETBACKS:  
FRONT 35'  
SIDE 15'  
REAR 35'



PLAT RECORDED IN  
P.B. NO. 166 PAGE 19 & 20

- NOTES:
- 1) IN ACCORDANCE WITH SECTION 17-33 OF THE SUBDIVISION ORDINANCE, ALL UTILITIES SHALL BE PLACED UNDERGROUND.
  - 2) UNLESS OTHERWISE NOTED, ALL DRAINAGE EASEMENTS DESIGNATED ON THIS PLAT SHALL BE PRIVATE.
  - 3) EXISTING MONUMENTS AT THE SUBDIVISION BOUNDARY ARE REFERENCED TO JAMES CITY COUNTY MONUMENT STATION NO. 315 (NAD27).
  - 4) ANY OLD WELLS ON SITE SHALL BE PROPERLY ABANDONED ACCORDING TO STATE PRIVATE WELL REGULATIONS.
  - 5) PROPERTY CORNERS TO BE SET BY EDLOE MORECOCK, III, C.L.S OF RICKMOND ENGINEERING, INC.



8:43 Am  
Recorded 3 day of Nov 1997  
DOCUMENT # 97000-3271  
John S. Ward Clerk

**Rickmond Engineering, Inc.**

1643-C Merrimac Trail  
Williamsburg VA 23185  
(804)229-1776 or 898-4149  
Civil Engineering  
Environmental Engineering  
Land Surveying