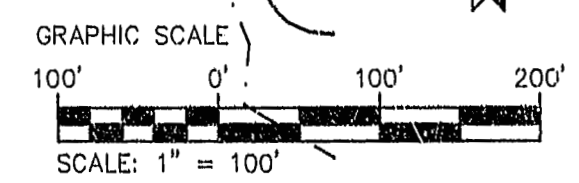
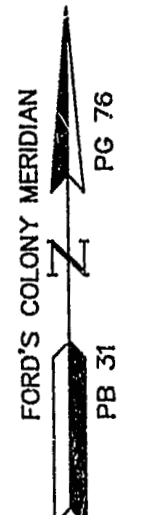
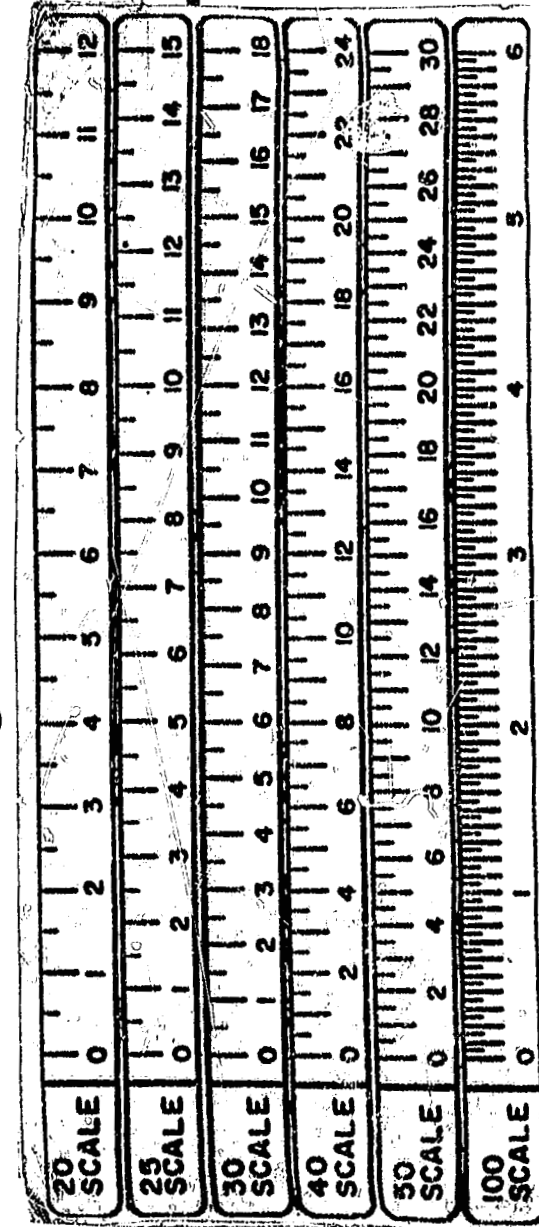
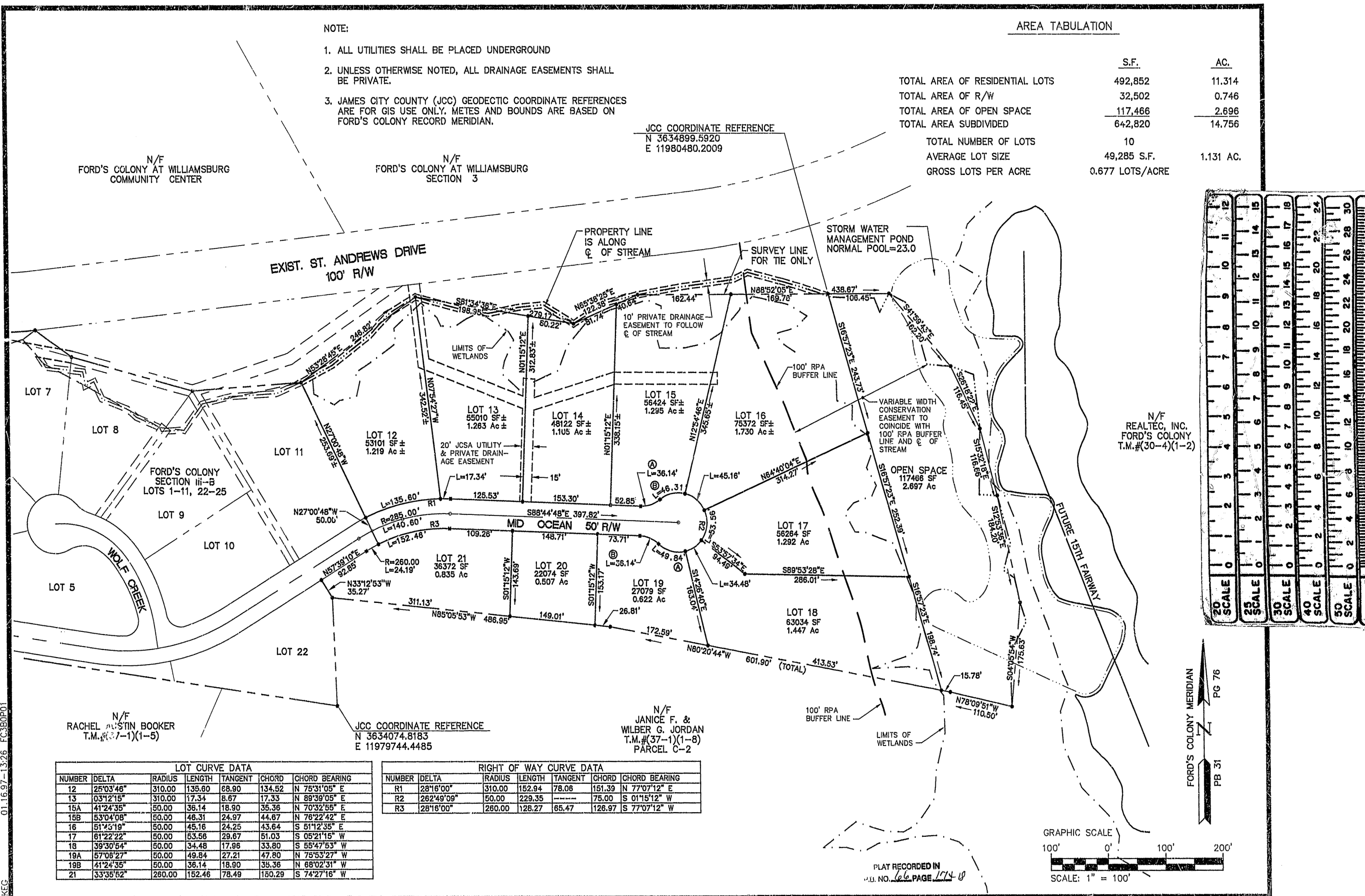


NOTE:

1. ALL UTILITIES SHALL BE PLACED UNDERGROUND
2. UNLESS OTHERWISE NOTED, ALL DRAINAGE EASEMENTS SHALL BE PRIVATE.
3. JAMES CITY COUNTY (JCC) GEODECTIC COORDINATE REFERENCES ARE FOR GIS USE ONLY. METES AND BOUNDS ARE BASED ON FORD'S COLONY RECORD MERIDIAN.

AREA TABULATION

	S.F.	AC.
TOTAL AREA OF RESIDENTIAL LOTS	492,852	11.314
TOTAL AREA OF R/W	32,502	0.746
TOTAL AREA OF OPEN SPACE	117,466	2.696
TOTAL AREA SUBDIVIDED	642,820	14.756
TOTAL NUMBER OF LOTS	10	
AVERAGE LOT SIZE	49,285 S.F.	1.131 AC.
GROSS LOTS PER ACRE	0.677 LOTS/ACRE	



PLAT RECORDED IN  
P.D. NO. 166 PAGE 174-18

N/F FORD'S COLONY AT WILLIAMSBURG SECTION 3  
JCC COORDINATE REFERENCE  
N 3634899.5920  
E 11980480.2009

N/F FORD'S COLONY AT WILLIAMSBURG COMMUNITY CENTER

N/F REALTEC, INC. FORD'S COLONY T.M.#(30-4)(1-2)

N/F RACHEL AUSTIN BOOKER T.M.#(37-1)(1-5)

JCC COORDINATE REFERENCE  
N 3634074.8183  
E 11979744.4485

N/F JANICE F. & WILBER G. JORDAN T.M.#(37-1)(1-8) PARCEL C-2

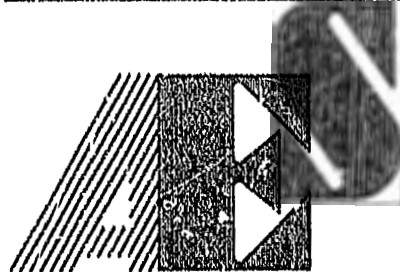
LOT CURVE DATA

NUMBER	DELTA	RADIUS	LENGTH	TANGENT	CHORD	CHORD BEARING
12	25°03'48"	310.00	135.60	68.90	134.52	N 75°31'05" E
13	03°12'15"	310.00	17.34	8.67	17.33	N 89°39'05" E
15A	41°24'35"	50.00	36.14	18.90	35.36	N 70°32'55" E
15B	53°04'08"	50.00	46.31	24.97	44.67	N 76°22'42" E
16	51°43'19"	50.00	45.16	24.25	43.64	S 51°12'35" E
17	81°22'22"	50.00	53.58	29.67	51.03	S 05°21'15" W
18	39°30'54"	50.00	34.48	17.96	33.80	S 55°47'53" W
19A	57°08'27"	50.00	49.84	27.21	47.80	N 75°53'27" W
19B	41°24'35"	50.00	36.14	18.90	35.36	N 68°02'31" W
21	33°35'52"	260.00	152.46	78.49	150.29	S 74°27'16" W

RIGHT OF WAY CURVE DATA

NUMBER	DELTA	RADIUS	LENGTH	TANGENT	CHORD	CHORD BEARING
R1	28°16'00"	310.00	152.94	78.06	151.39	N 77°07'12" E
R2	282°49'09"	50.00	229.35	---	75.00	S 01°15'12" W
R3	28°18'00"	260.00	128.27	65.47	126.97	S 77°07'12" W

01.16.97-13.26 FC3B0P01



**CONSULTING ENGINEERS**  
5248 Olde Towne Road, Suite 1  
Williamsburg, Virginia 23188  
(804) 253-0040  
Fax (804) 220-8994

PLAT OF SUBDIVISION  
**FORD'S COLONY AT WILLIAMSBURG**  
SECTION III-B  
LOTS 12 - 21  
POWHATAN DISTRICT JAMES CITY COUNTY VIRGINIA

No.	DATE	REVISION / COMMENT / NOTE	BY

Designed CAH	Drawn KEG
Scale 1"=100'	Date 1/7/97
Project No. 5652-3B	
Drawing No. 2 OF 2	