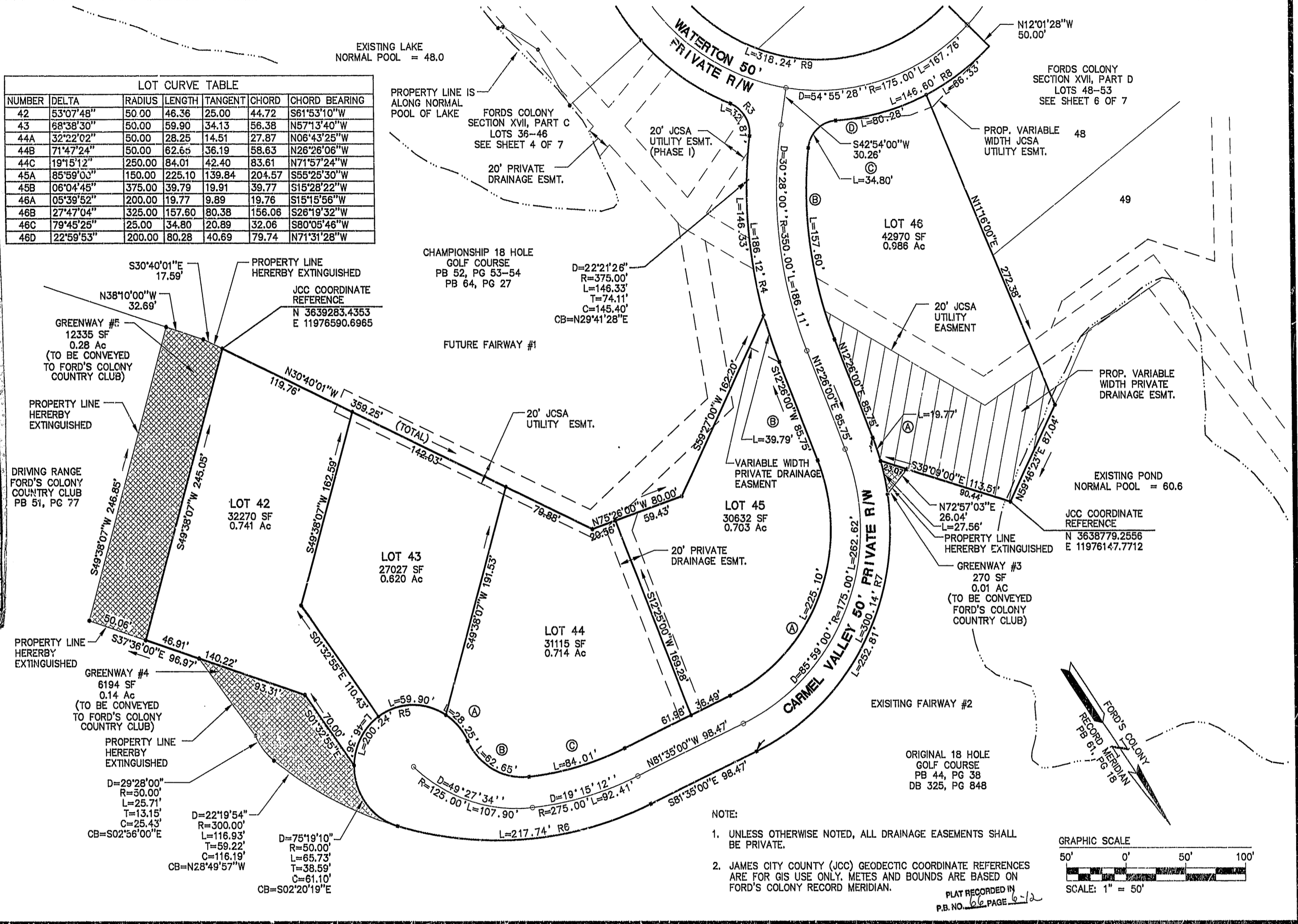
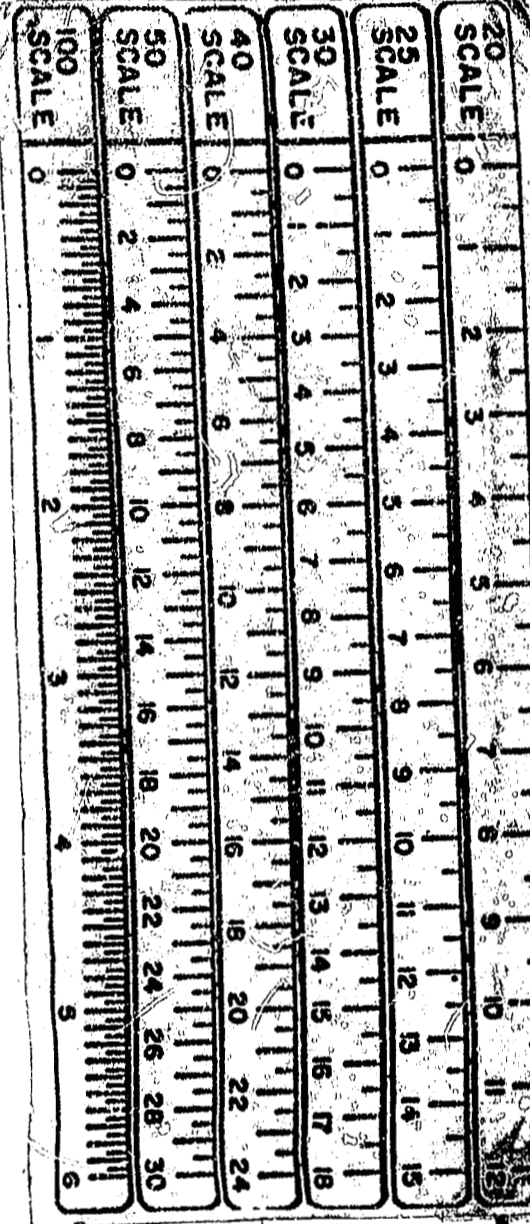
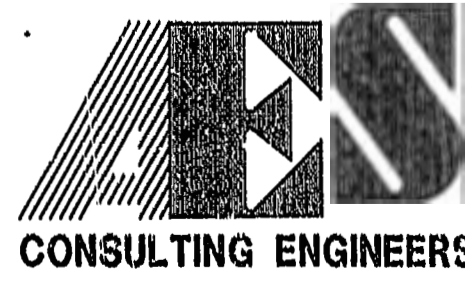


LOT CURVE TABLE						
NUMBER	DELTA	RADIUS	LENGTH	TANGENT	CHORD	CHORD BEARING
42	53°07'48"	50.00	46.36	25.00	44.72	S61°53'10"W
43	68°38'30"	50.00	59.90	34.13	56.38	N57°13'40"W
44A	32°22'02"	50.00	28.25	14.51	27.87	N06°43'25"W
44B	71°47'24"	50.00	62.65	36.19	58.63	N26°26'06"W
44C	19°15'12"	250.00	84.01	42.40	83.61	N71°57'24"W
45A	85°59'00"	150.00	225.10	139.84	204.57	S55°25'30"W
45B	06°04'45"	375.00	39.79	19.91	39.77	S15°28'22"W
46A	05°39'52"	200.00	19.77	9.89	19.76	S15°15'56"W
46B	27°47'04"	325.00	157.60	80.38	156.06	S26°19'32"W
46C	79°45'25"	25.00	34.80	20.89	32.06	S80°05'46"W
46D	22°59'53"	200.00	80.28	40.69	79.74	N71°31'28"W



12.03.96-14.49 .FC170P02



5248 Olde Towne Road, Suite 1  
Williamsburg, Virginia 23188  
(804) 253-0040  
Fax (804) 220-8994

PLAT OF SUBDIVISION  
**FORD'S COLONY  
AT WILLIAMSBURG**  
SECTION XVII, PART C  
LOTS 36 - 46

POWHATAN DISTRICT JAMES CITY COUNTY VIRGINIA



No.	DATE	REVISION / COMMENT / NOTE	BY

11:20 AM  
Recorded 2 to day of February 1997  
DOCUMENT # 2007-3025  
Clerk  
By: [Signature]

Designed CAH	Drawn KEG
Scale 1"=50'	Date 11/22/96
Project No. 5652-17	
Drawing No. 5 OF 7	