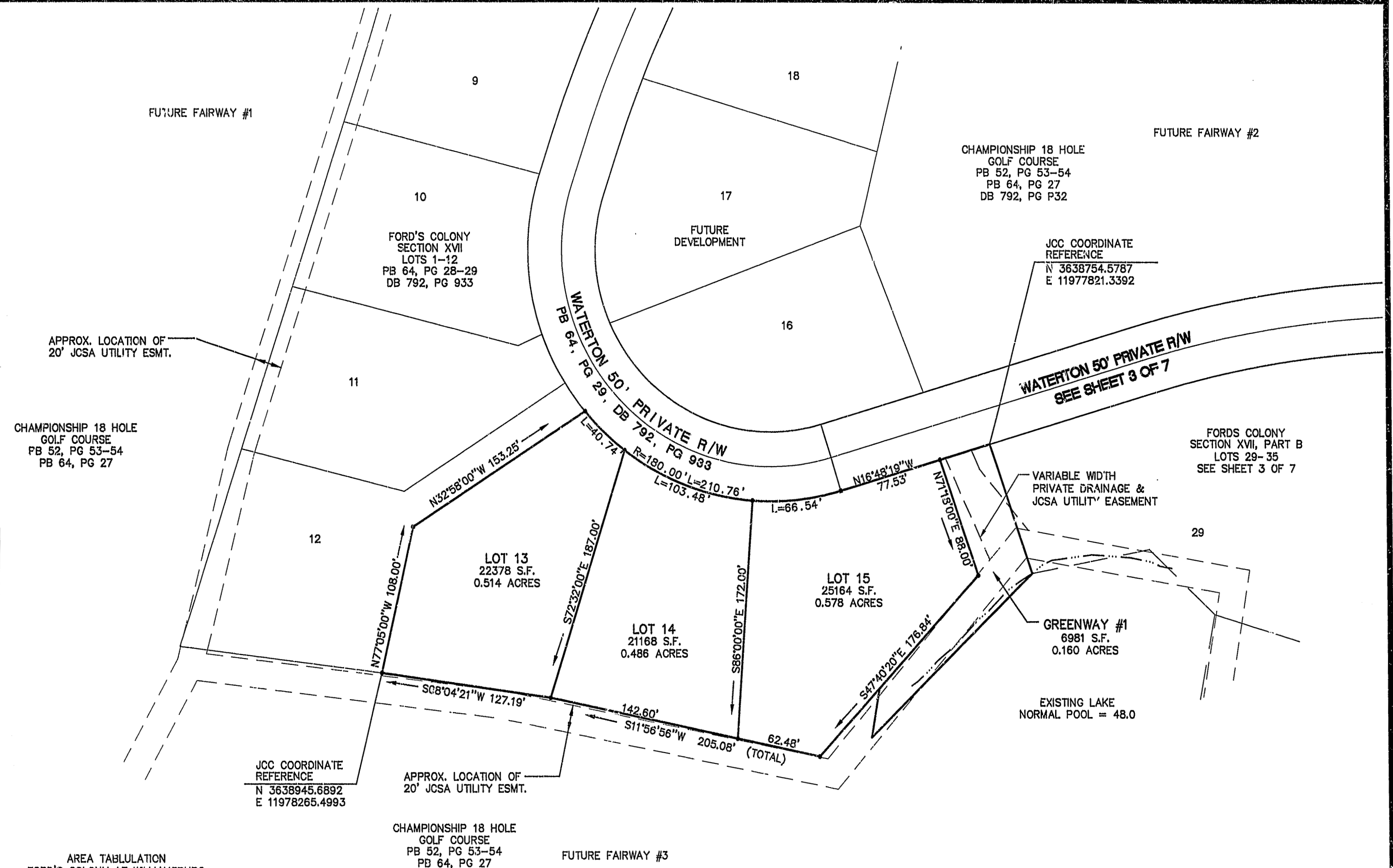


12.03.96-11:4: SC1170P01



AREA TABULATION  
FORD'S COLONY AT WILLIAMSBURG  
SECTION XVII  
LOTS 13 - 15

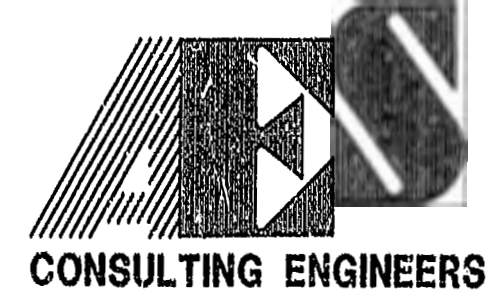
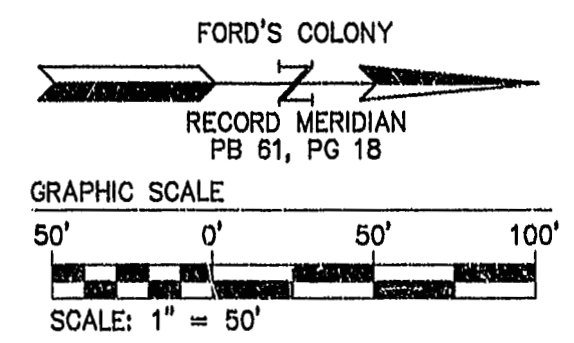
AREA OF RESIDENTIAL LOTS	68,710 S.F.	1.577 ACRES
AREA OF GREENWAY	6,981 S.F.	0.160 ACRES
<b>TOTAL ARE SUBDIVIDED</b>	<b>75,691 S.F.</b>	<b>1.737 ACRES</b>
NUMBER OF LOTS	3	
AVERAGE LOT SIZE	22,903 S.F.	0.526 ACRES
SMALLEST LOT (14)	21,168 S.F.	0.486 ACRES
LARGEST LOT (15)	25,164 S.F.	0.578 ACRES
LOTS PER ACRE	1.73	

LOT CURVE TABLE						
NUMBER	DELTA	RADIUS	LENGTH	TANGENT	CHORD	CHORD BEARING
13	12°58'06"	180.00	40.74	20.46	40.65	N43°48'02"E
14	32°56'24"	180.00	103.48	53.22	102.07	N20°50'47"E
15	21°10'54"	180.00	66.54	33.66	66.17	N06°12'52"W

NOTE:

- UNLESS OTHERWISE NOTED, ALL DRAINAGE EASEMENTS SHALL BE PRIVATE.
- JAMES CITY COUNTY (JCC) GEODECTIC COORDINATE REFERENCES ARE FOR GIS USE ONLY. METES AND BOUNDS ARE BASED ON FORD'S COLONY RECORD MERIDIAN.

PLAT RECORDED IN  
P.B. NO. 66, PAGE 6-12



5248 Olde Towne Road, Suite 1  
Williamsburg, Virginia 23188  
(804) 253-0040  
Fax (804) 220-8994

PLAT OF SUBDIVISION  
**FORD'S COLONY  
AT WILLIAMSBURG**  
SECTION XVII, PART A  
LOTS 13 - 15

POWATAN DISTRICT    JAMES CITY COUNTY    VIRGINIA



No.	DATE	REVISION / COMMENT / NOTE	BY

Designed CAH	Drawn KEG
Scale 1"=50'	Date 11/22/96
Project No. 5652-17	
Drawing No. 2 OF 7	