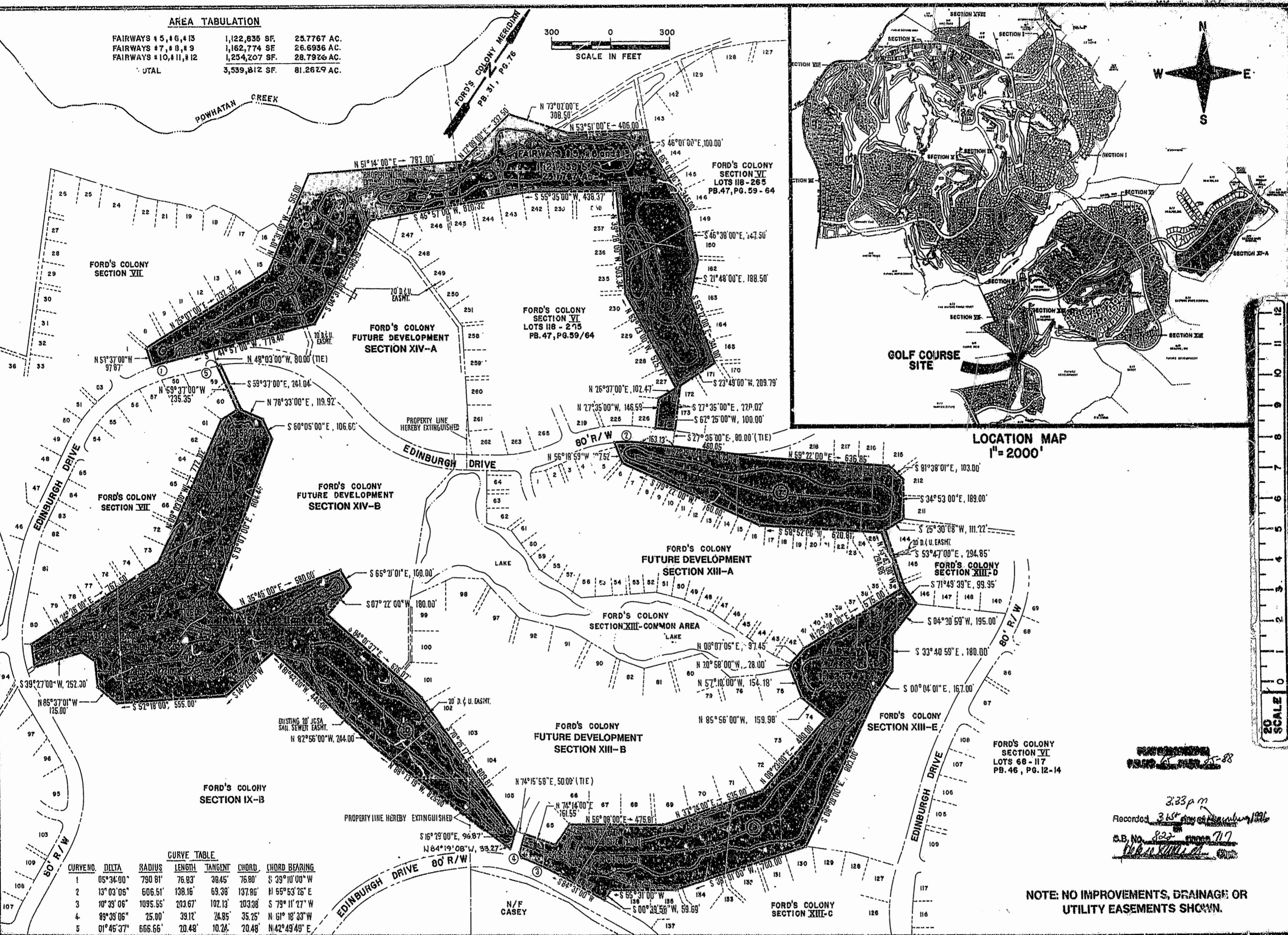
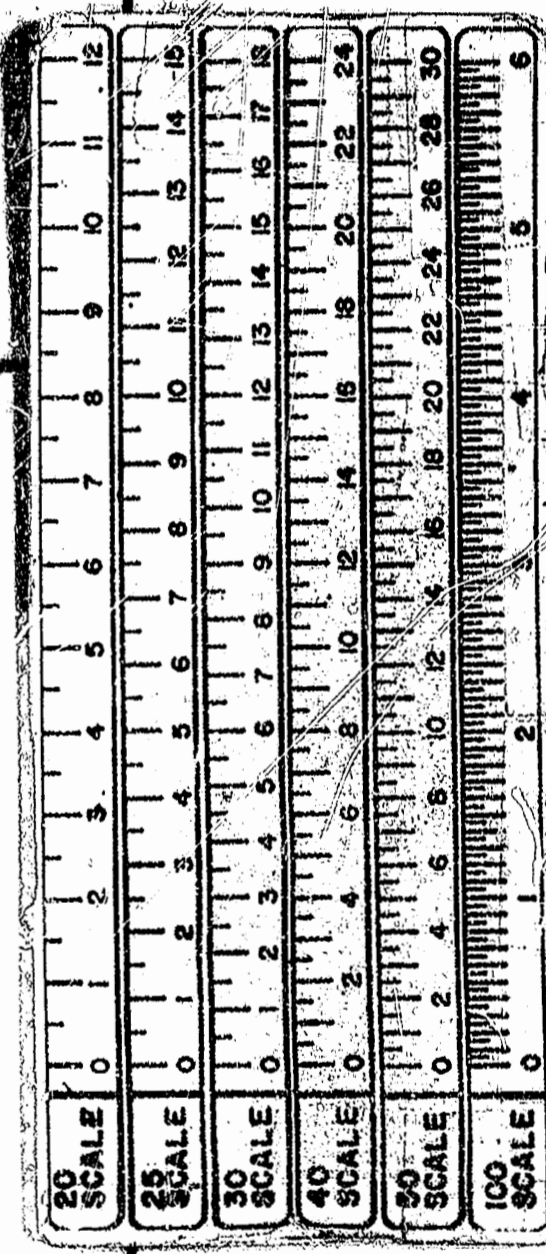
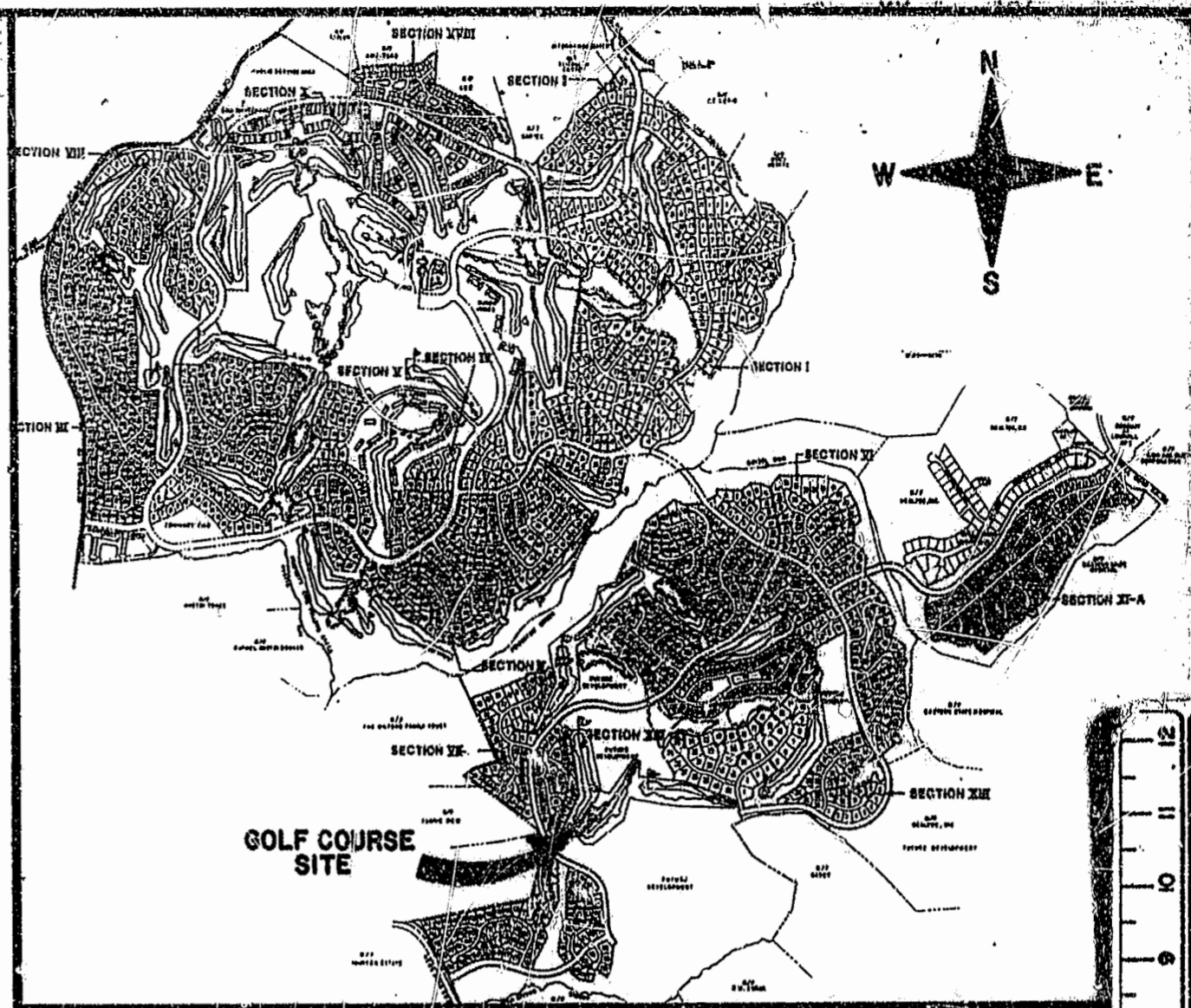
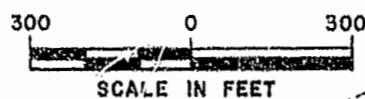


AREA TABULATION

FAIRWAYS #5, #6, #13	1,122,836 SF.	25.7767 AC.
FAIRWAYS #7, #8, #9	1,162,774 SF.	26.6936 AC.
FAIRWAYS #10, #11, #12	1,254,207 SF.	28.7926 AC.
TOTAL	3,539,817 SF.	81.2629 AC.

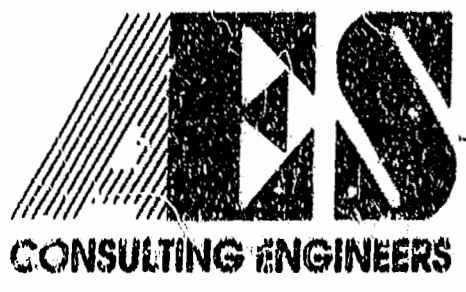


CURVE TABLE

CURVE NO.	DELTA	RADIUS	LENGTH	TANGENT	CHORD	CHORD BEARING
1	05°34'00"	790.81'	76.83'	38.45'	76.80'	S 39°10'00"W
2	13°03'05"	606.51'	138.16'	69.38'	137.86'	N 55°53'25"E
3	10°39'06"	1095.55'	203.67'	102.13'	203.38'	S 79°11'27"W
4	89°03'06"	25.00'	39.12'	24.85'	35.25'	N 61°18'33"W
5	01°45'37"	666.56'	20.48'	10.26'	20.48'	N 42°49'49"E

Recorded 3:33 p.m.
 O.B. No. 822
 12/17/96

NOTE: NO IMPROVEMENTS, DRAINAGE OR UTILITY EASEMENTS SHOWN.



5248 Olde Towne Road, Suite 1
 Williamsburg, Virginia 23188
 (804) 253-0040
 Fax (804) 220-8994

**PLAT OF SUBDIVISION SHOWING
 WILLIAMSBURG WEST 9 HOLE GOLF COURSE
 OWNED BY REALTEC, INCORPORATED**

BERKELEY DISTRICT JAMES CITY COUNTY VIRGINIA



NO.	DATE	REVISION / COMMENT / NOTE	BY

Designed LCA/AES	Drawn JB
Scale 1"=300'	Date 12/17/96
Project No. 5652	
Drawing No. 4 of 4	