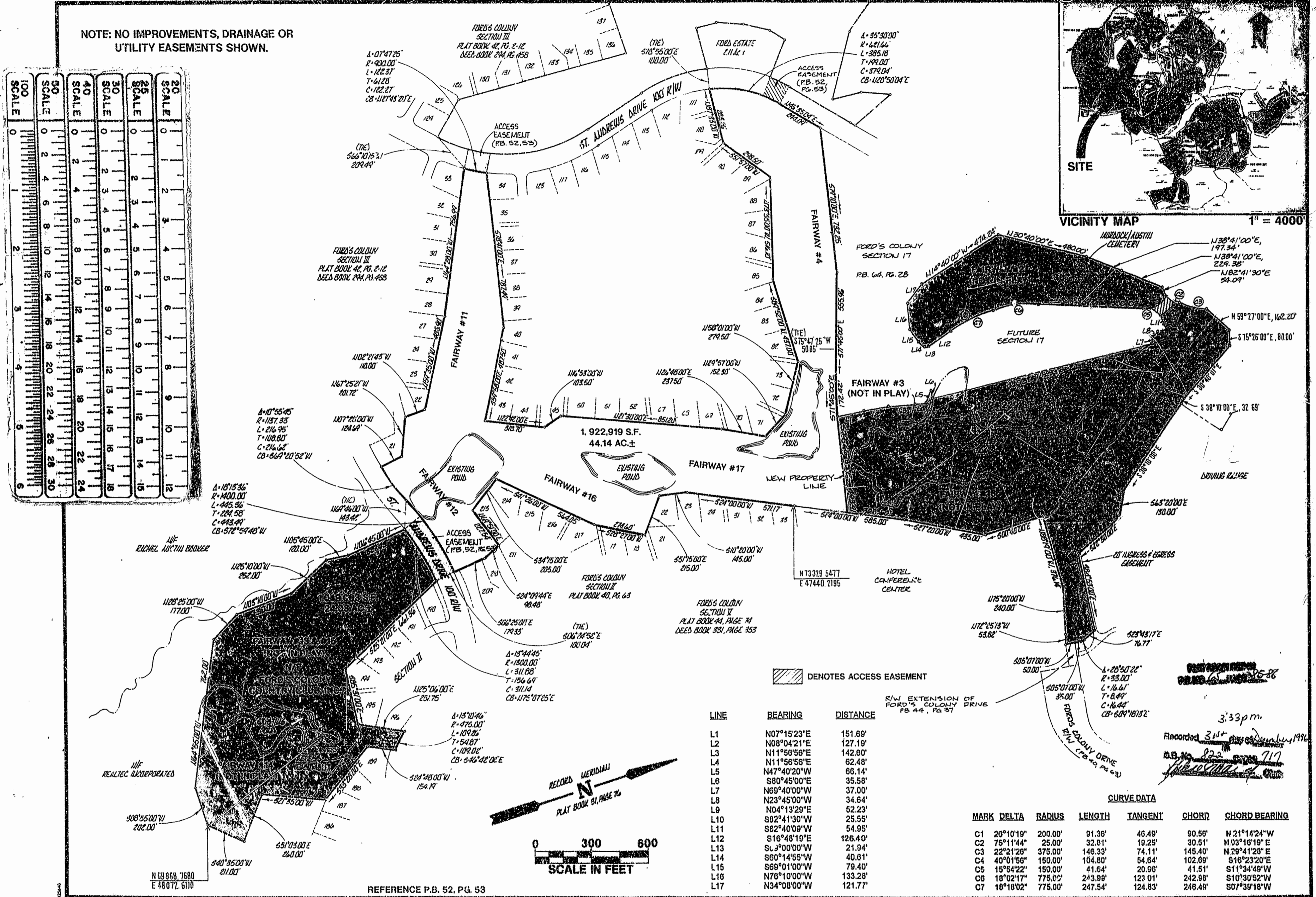
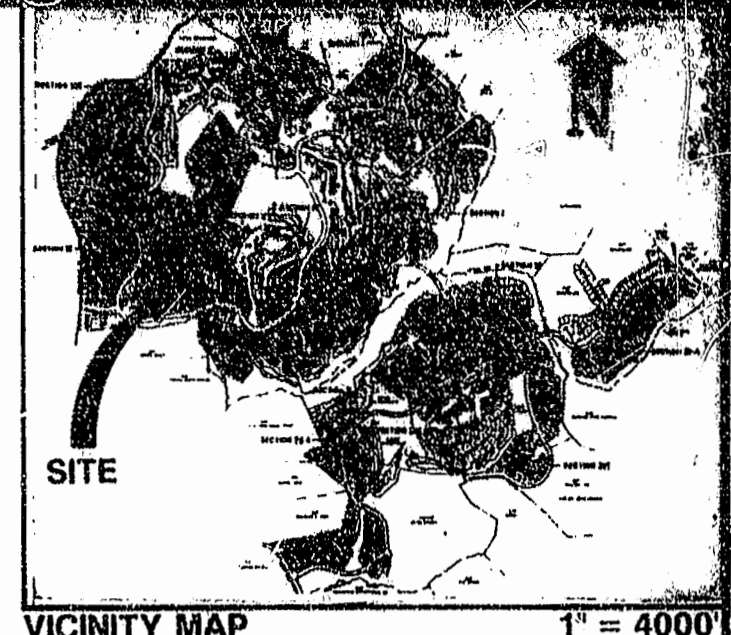
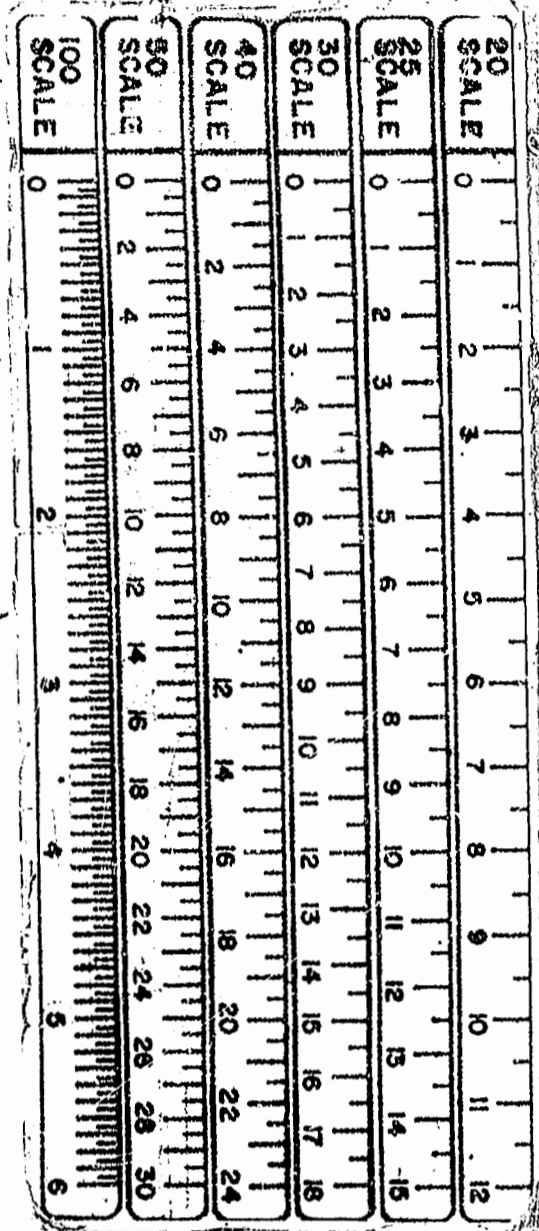


NOTE: NO IMPROVEMENTS, DRAINAGE OR UTILITY EASEMENTS SHOWN.

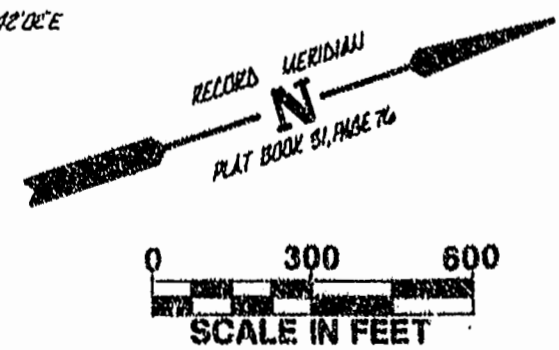


▨ DENOTES ACCESS EASEMENT

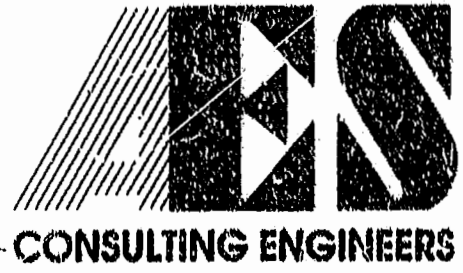
R/W EXTENSION OF FORD'S COLONY DRIVE PB 44, PG 57

LINE	BEARING	DISTANCE
L1	N07°15'23"E	151.69'
L2	N08°04'21"E	127.19'
L3	N11°50'58"E	142.60'
L4	N11°56'56"E	62.48'
L5	N47°40'20"W	66.14'
L6	S80°45'00"E	35.58'
L7	N69°40'00"W	37.00'
L8	N23°45'00"W	34.64'
L9	N04°13'29"E	52.23'
L10	S82°41'30"W	25.55'
L11	S82°40'08"W	54.95'
L12	S16°48'19"E	126.40'
L13	S0°00'00"W	21.94'
L14	S60°14'55"W	40.61'
L15	S69°01'00"W	79.40'
L16	N78°10'00"W	133.28'
L17	N34°08'00"W	121.77'

MARK	DELTA	RADIUS	LENGTH	TANGENT	CHORD	CHORD BEARING
C1	26°10'19"	200.00'	91.36'	46.49'	90.55'	N21°14'24"W
C2	75°11'44"	25.00'	32.81'	19.25'	30.51'	N03°16'19"E
C3	22°21'28"	375.00'	146.33'	74.11'	145.40'	N29°41'28"E
C4	40°01'56"	150.00'	104.80'	54.64'	102.69'	S16°23'20"E
C5	15°54'22"	150.00'	41.64'	20.96'	41.51'	S11°34'49"W
C6	18°02'17"	775.00'	243.99'	123.01'	242.98'	S10°30'32"W
C7	18°18'02"	775.00'	247.54'	124.83'	246.49'	S07°39'18"W

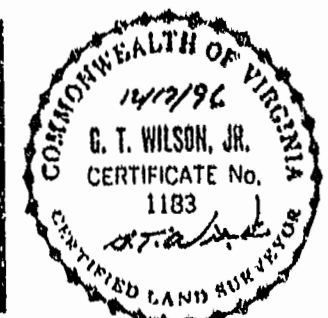


REFERENCE P.B. 52, PG. 53



5248 Olde Towne Road, Suite 1
 Williamsburg, Virginia 23188
 (804) 253-0040
 Fax (804) 220-8994

PLAT OF SUBDIVISION SHOWING CHAMPIONSHIP 18 HOLE GOLF COURSE FAIRWAY NO. 1, 2, 3, 13, 14, 15 & 18 OWNED BY REALTEC, INCORPORATED



No.	DATE	REVISION / COMMENT / NOTE	BY

Designed SOW	Drawn RMJ
Scale 1"=300'	Date 12/17/96
Project No. 5652	
Drawing No. 2 of 4	