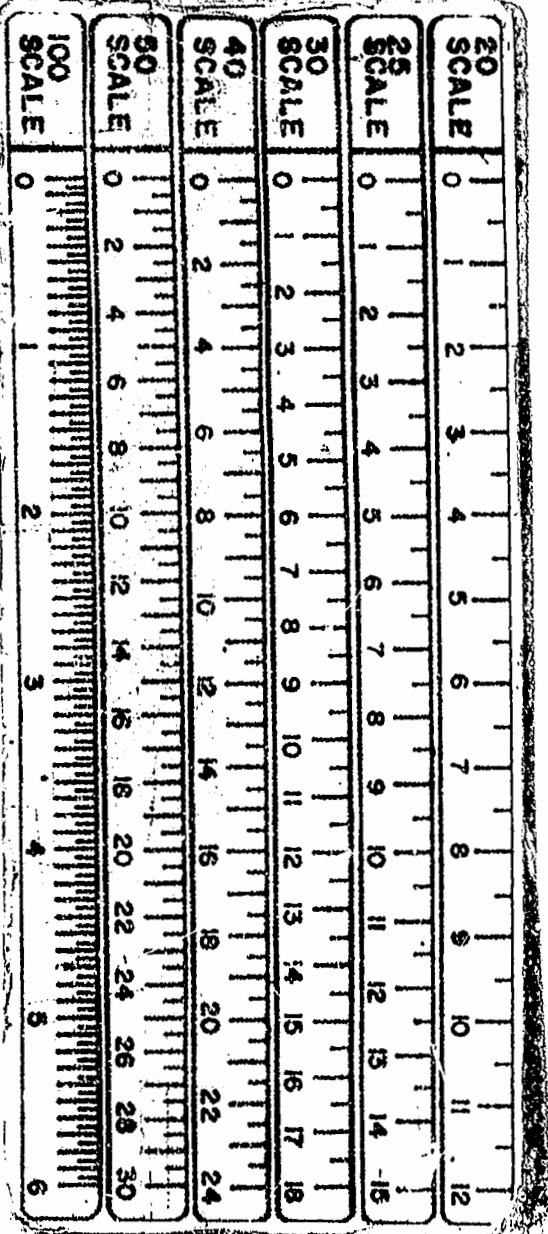
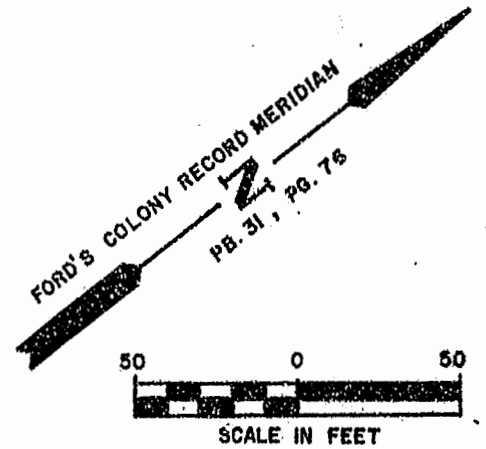


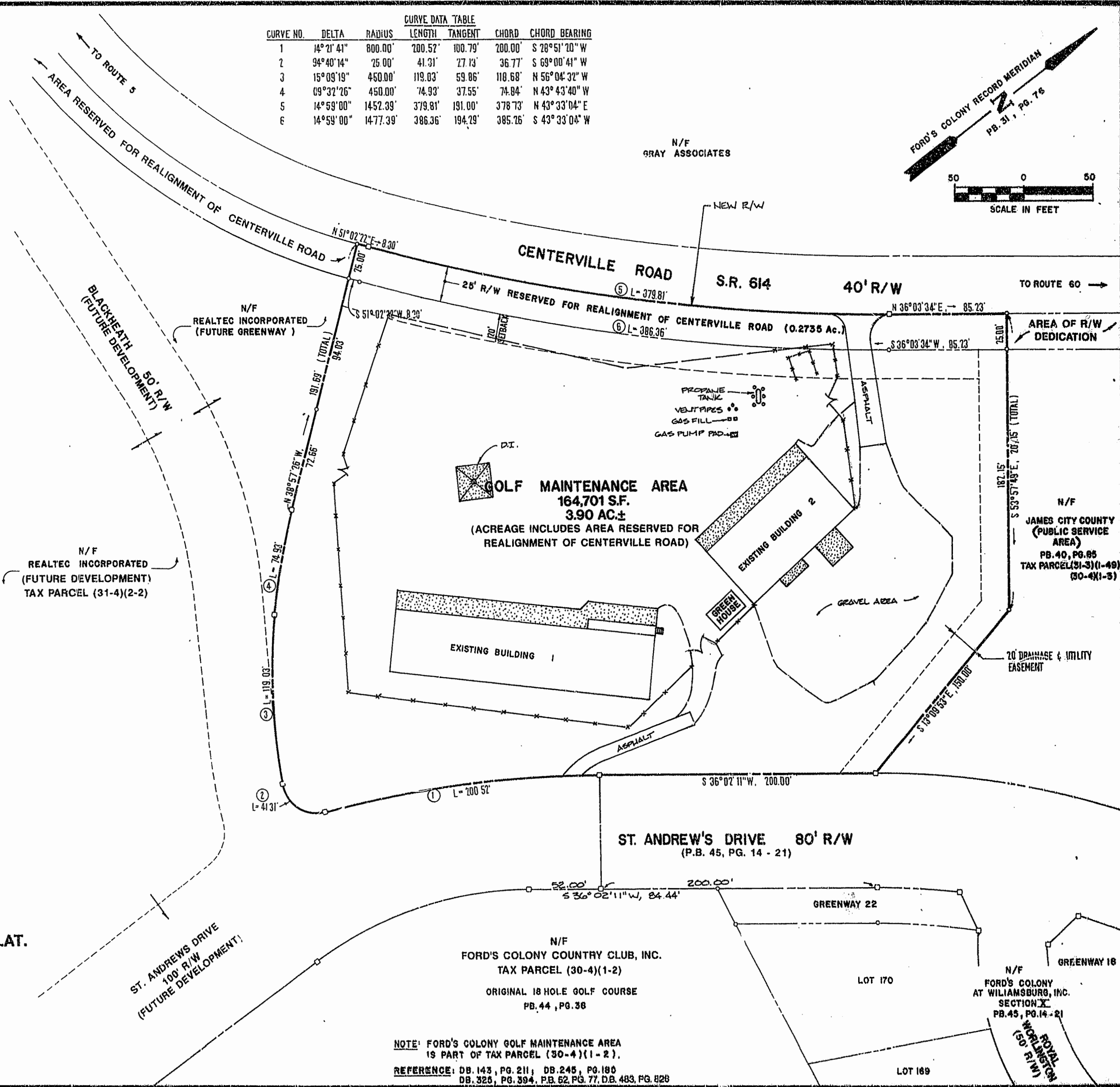
LOCATION MAP  
SCALE 1" = 2000'

CURVE NO.	DELTA	RADIUS	CURVE DATA TABLE			
			LENGTH	TANGENT	CHORD	CHORD BEARING
1	14° 21' 41"	800.00'	200.52'	100.79'	200.00'	S 28° 51' 20" W
2	94° 40' 14"	25.00'	41.31'	27.73'	36.77'	S 69° 00' 41" W
3	15° 09' 19"	450.00'	119.03'	59.86'	118.68'	N 56° 04' 32" W
4	69° 32' 26"	450.00'	74.93'	37.55'	74.84'	N 43° 43' 40" W
5	14° 59' 00"	1452.39'	379.81'	191.00'	378.73'	N 43° 33' 04" E
6	14° 59' 00"	1477.39'	386.36'	194.29'	385.26'	S 43° 33' 04" W

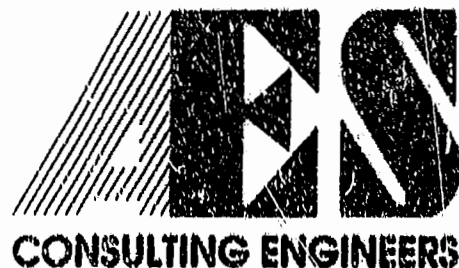


3:33pm  
Recorded 31st day of December 1996  
D.B. No. 822  
Release

NO BOUNDARY LINE ADJUSTMENTS ON THIS PLAT.

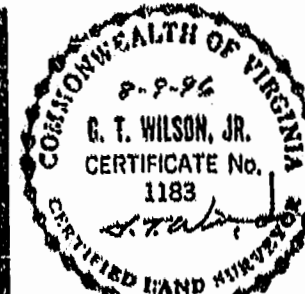


NOTE: FORD'S COLONY GOLF MAINTENANCE AREA IS PART OF TAX PARCEL (30-4)(1-2).  
REFERENCE: DB. 143, PG. 211; DB. 245, PG. 180; DB. 325, PG. 394; FB. 62, PG. 77; DB. 483, PG. 828



5248 Old Towne Road, Suite 1  
Williamsburg, Virginia 23188  
(804) 253-0040  
Fax (804) 220-9994

PLAT OF SURVEY  
AND BOUNDARY LINE ADJUSTMENT  
PREPARED FOR  
FORD'S COLONY COUNTRY CLUB, INC.  
GOLF MAINTENANCE AREA



NO.	DATE	REVISION / COMMENT / NOTE	BY

Designed SOW	Drawn RMJ
Scale 1" = 50'	Date 8/9/96
Project No. 5652	
Drawing No. 7 of 8	