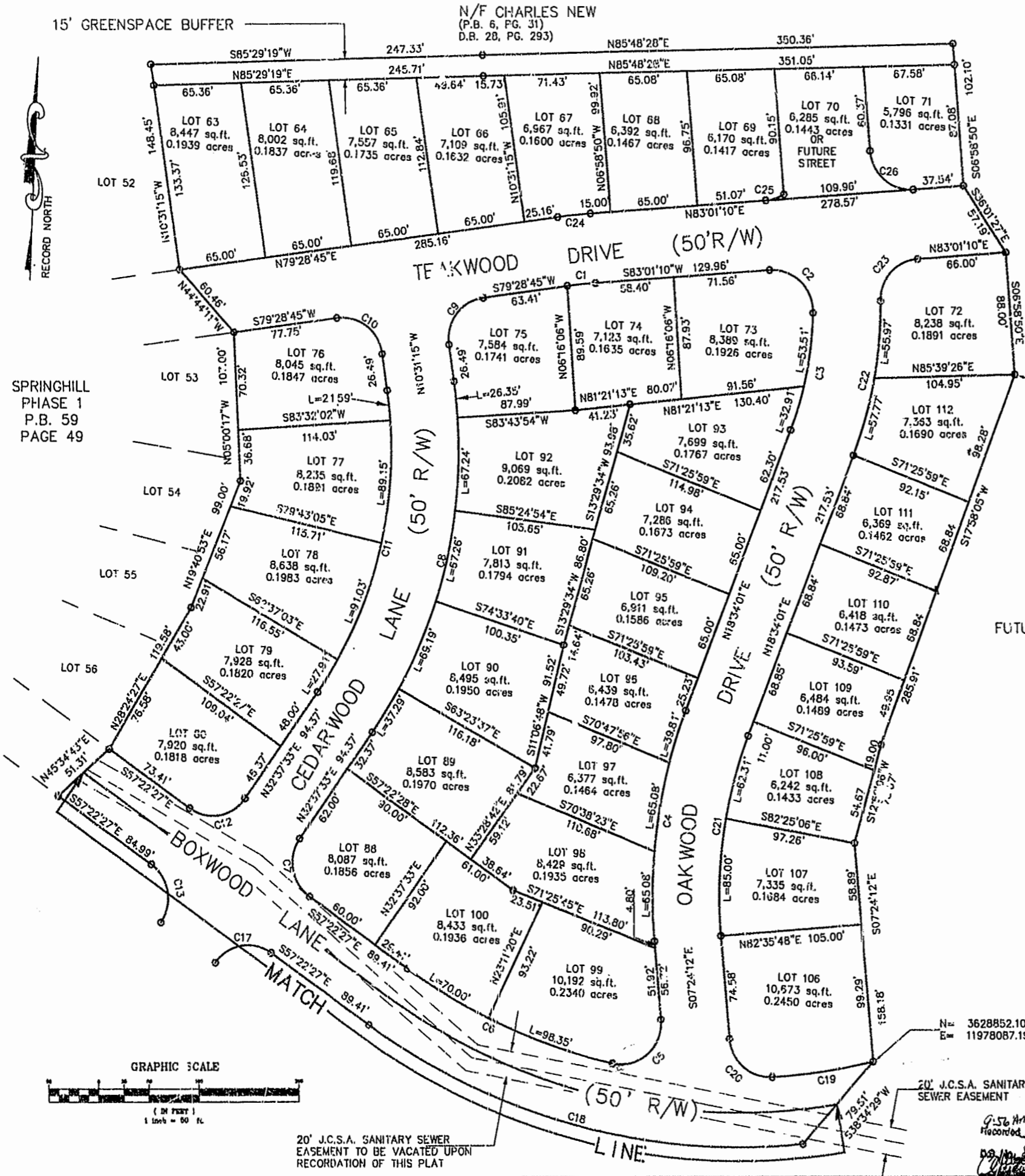


CURVE	RADIUS	LENGTH	TANGENT	CHORD	BEARING	DELTA
C1	350.01	21.83	10.82	21.62	S81°45'58" W	03°32'26"
C2	30.00	30.13	7.17	44.50	N49°06'34" W	05°44'31"
C3	250.00	86.42	43.64	85.99	N08°39'51" E	19°48'19"
C4	375.00	169.97	86.47	168.52	S05°34'55" W	25°58'12"
C5	30.00	56.20	40.79	48.34	N46°15'49" E	107°20'01"
C6	425.00	168.35	85.29	167.25	S88°43'19" E	22°41'43"
C7	30.00	47.12	30.00	42.43	S12°22'27" E	90°00'00"
C8	355.00	267.33	140.38	261.00	N11°03'09" E	43°08'48"
C9	30.00	47.12	30.00	42.43	S34°28'45" W	90°00'00"
C10	30.00	47.12	30.00	42.43	N95°31'15" W	90°00'00"
C11	305.00	229.68	120.59	224.20	N11°03'09" E	43°08'48"
C12	30.00	47.12	30.00	42.43	N77°37'37" E	90°00'00"
C13	30.00	47.12	30.00	42.43	S12°22'27" W	89°59'57"
C17	30.00	47.12	30.00	42.43	S77°37'37" W	90°00'00"
C18	475.00	341.99	178.79	334.18	S78°07'01" E	41°15'08"
C19	425.00	168.35	85.29	167.25	N76°15'51" E	101°3'41"
C20	30.00	46.54	29.42	42.01	S51°50'45" E	88°53'07"
C21	325.00	147.31	74.94	141.05	S05°34'55" W	25°58'12"
C22	300.00	113.74	57.96	111.06	N17°42'19" E	21°43'27"
C23	30.00	45.12	28.06	40.99	S19°55'54" W	86°10'33"
C24	400.01	24.72	12.38	24.71	S81°14'58" W	03°32'26"
C25	30.00	14.49	7.39	14.35	N89°10'58" E	27°40'53"
C26	30.00	47.12	30.00	42.43	S51°58'50" E	89°59'58"



NOTE:  
THE COORDINATES SHOWN ON THIS PLAT ARE REFERENCED TO VIRGINIA STATE PLANE COORDINATES SOUTH ZONE (NAD83), IN U.S. SURVEY FEET, BASED ON JAMES CITY COUNTY MONUMENT STATION NUMBER 322.

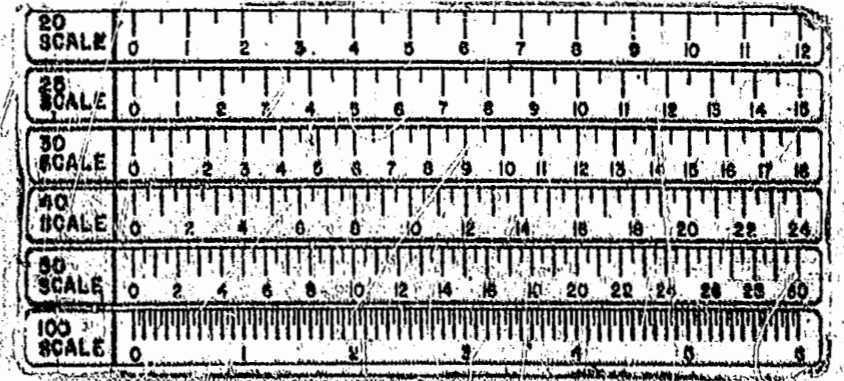
ROTATION ANGLE FROM THIS PLAT TO GRID NORTH = -08°27'53".  
SCALE FACTOR = 0.99994861

IN ACCORDANCE WITH SECTION 17-33 OF THE SUBDIVISION ORDINANCE, ALL UTILITIES SHALL BE PLACED UNDERGROUND.

UNLESS OTHERWISE NOTED, ALL DRAINAGE EASEMENTS DESIGNATED ON THIS PLAT SHALL BE PRIVATE.

PLAT OF  
SPRINGHILL  
PHASE 2  
BEING A SUBDIVISION OF THE PROPERTY OF  
SPRINGHILL DEVELOPMENT CO., L.L.C.  
JAMES CITY COUNTY, VIRGINIA  
SCALE: 1"=50' DATE: 11/12/96  
BERKELEY DISTRICT  
SHEET 2 OF 2

**Langley and McDonald, P.C.**  
Engineers - Surveyors - Planners  
Landscape Architects - Environmental Consultants  
VIRGINIA BEACH WILLIAMSBURG



6240W