

BLDG. NUMBER	UNIT NUMBER	UNIT TYPE	ADDRESS	PARKING SPACE NO.
300	3-301	AR	301 QUEENS CRESCENT	65
300	3-302	B	302 QUEENS CRESCENT	64
300	3-303	A	303 QUEENS CRESCENT	63
300	3-304	E	304 QUEENS CRESCENT	58
300	3-305	C	305 QUEENS CRESCENT	59
300	3-306	D	306 QUEENS CRESCENT	60
300	3-307	F	307 QUEENS CRESCENT	61
300	3-308	DR	308 QUEENS CRESCENT	69
300	3-309	CR	309 QUEENS CRESCENT	68
300	3-310	ER	310 QUEENS CRESCENT	67

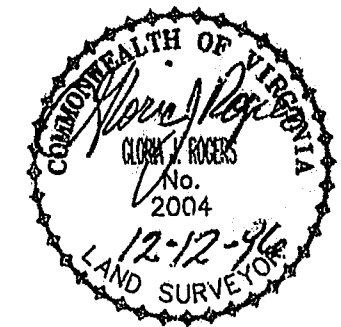
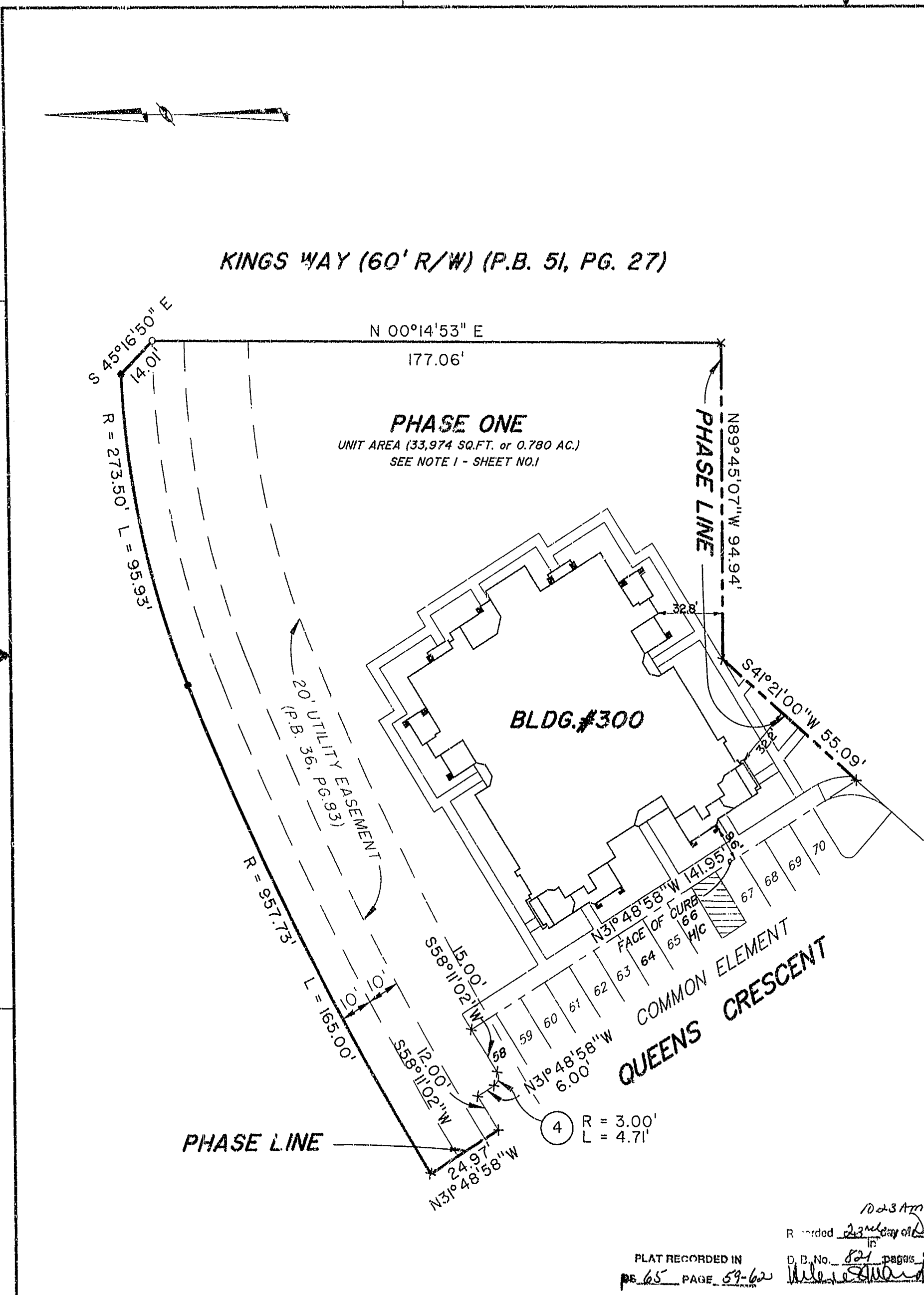


EXHIBIT # 1 PHASE ONE
 LAFONTAINE CONDOMINIUMS
 AT
 WILLIAMSBURG CROSSING
PHASE ONE
 FOR
 THE FRANCISCUS COMPANY
 JAMESTOWN DISTRICT, JAMES CITY COUNTY, VIRGINIA

10-31-96
 Recorded 23rd day of December, 1996
 D. B. No. 821 pages 3/2
 [Signature] Clerk

PLAT RECORDED IN
 BE 65 PAGE 59-62

Hassell & Folkes, P.C. Engineers Surveyors Planners Chesapeake, VA 23320 (804) 547-9531	SIZE C	CONTRACT NO. 65/13	DISK/BOX 65/13	FILENAME LFWCRSS.ZIP	REV.
SCALE: 1" = 25'	DATE 08/16/96	SHEET 4 of 4			

