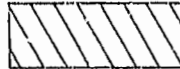

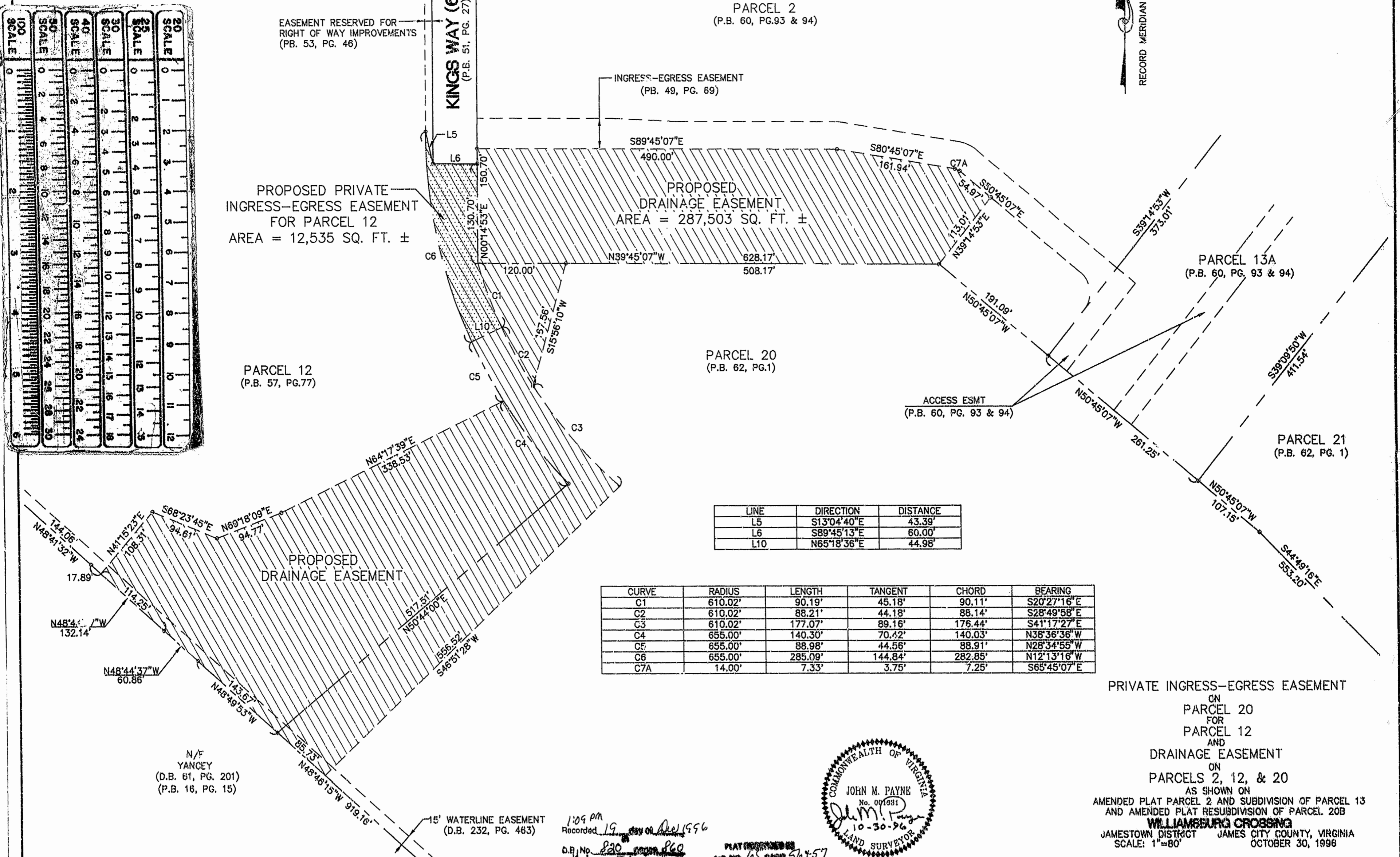
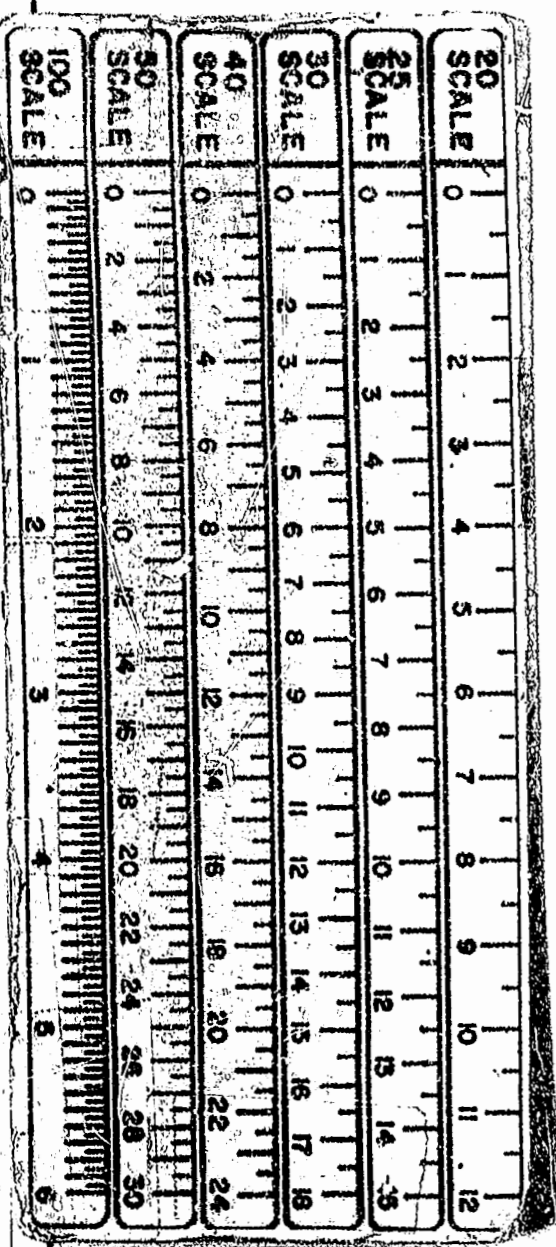


LEGEND

-  PROPOSED DRAINAGE EASEMENT
-  PROPOSED INGRESS-EGRESS EASEMENT



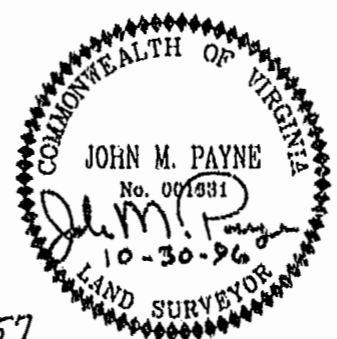
LINE	DIRECTION	DISTANCE
L5	S13°04'40"E	43.39'
L6	S89°45'13"E	60.00'
L10	N65°18'36"E	44.98'

CURVE	RADIUS	LENGTH	TANGENT	CHORD	BEARING
C1	610.02'	90.19'	45.18'	90.11'	S20°27'16"E
C2	610.02'	88.21'	44.18'	88.14'	S28°49'58"E
C3	610.02'	177.07'	89.16'	176.44'	S41°17'27"E
C4	655.00'	140.30'	70.42'	140.03'	N38°36'36"W
C5	655.00'	88.98'	44.56'	88.91'	N28°34'55"W
C6	655.00'	285.09'	144.84'	282.85'	N12°13'16"W
C7A	14.00'	7.33'	3.75'	7.25'	S65°45'07"E

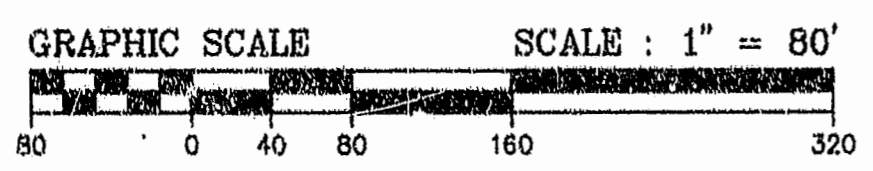
N/F YANCEY
(D.B. 61, PG. 201)
(P.B. 16, PG. 15)

15' WATERLINE EASEMENT
(D.B. 232, PG. 463)

1:09 PM
Recorded 19 Nov 1996
D.B. No. 820
PLAT RECORDED IN P.B. NO. 66, PAGE 54 & 57



PRIVATE INGRESS-EGRESS EASEMENT
ON
PARCEL 20
FOR
PARCEL 12
AND
DRAINAGE EASEMENT
ON
PARCELS 2, 12, & 20
AS SHOWN ON
AMENDED PLAT PARCEL 2 AND SUBDIVISION OF PARCEL 13
AND AMENDED PLAT RESUBDIVISION OF PARCEL 20B
WILLIAMSBURG CROSSING
JAMESTOWN DISTRICT JAMES CITY COUNTY, VIRGINIA
SCALE: 1"=80' OCTOBER 30, 1996



DRAWN BY: SAG PROJECT NO.: 88079-MF4
CHKD. BY: JMP DWG. NO.: 24712B

LANGLEY and McDONALD, P.C.
5544 GREENWICH ROAD, SUITE 200
VIRGINIA BEACH, VIRGINIA 23462
PHONE: (757) 473-2000

