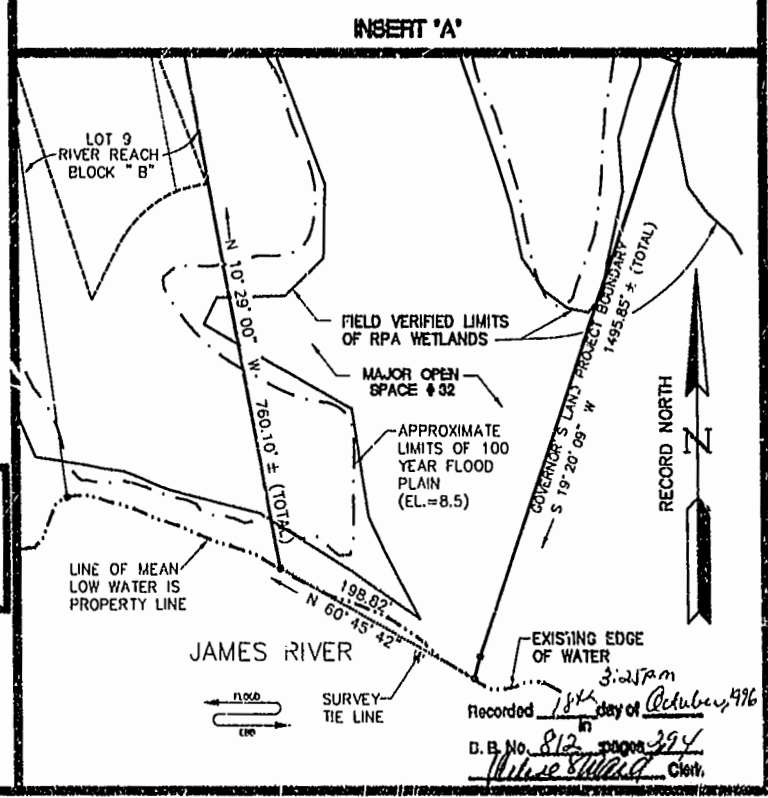


NUMBER	DELTA	RADIUS	LENGTH	TANGENT	CHORD	CHORD BEARING
R1	80° 51' 46"	25.00	35.28	21.30	32.43	N09° 52' 06" W
R2	09° 24' 15"	440.00	72.22	36.19	72.14	N55° 00' 07" W
R3	09° 58' 44"	520.00	90.56	45.40	90.45	S54° 42' 42" E
R4	76° 37' 19"	25.00	33.43	19.75	31.00	S88° 02' 10" E
R5	51° 58' 47"	300.00	272.18	146.26	262.94	N79° 38' 39" E
R6	77° 09' 57"	25.00	33.67	19.85	31.18	N67° 03' 09" E
R7	86° 50' 05"	25.00	37.89	23.66	34.37	S13° 11' 08" E
R8	11° 56' 03"	300.00	62.49	31.36	62.37	S50° 38' 10" E
R9	40° 09' 43"	500.00	349.80	182.46	342.80	G24° 37' 18" E
R10	68° 40' 35"	50.00	59.93	34.16	56.41	S38° 54' 43" E
R11	248° 41' 38"	60.00	260.43		99.08	S51° 05' 48" W
R12	40° 05' 41"	450.00	314.90	164.21	308.52	N24° 37' 18" W
R13	109° 15' 08"	250.00	476.70	352.12	407.70	S80° 42' 17" W
R14	04° 29' 04"	300.00	23.48	11.75	23.47	S28° 19' 15" W

NUMBER	DELTA	RADIUS	LENGTH	TANGENT	CHORD	CHORD BEARING
C1	01° 44' 50"	300.00	9.15	4.57	9.15	S54° 31' 35" W
C2	20° 55' 56"	300.00	109.61	55.42	109.00	N65° 52' 00" E
C3	25° 40' 40"	300.00	134.46	68.38	133.33	N89° 10' 23" E
C4	03° 37' 22"	300.00	18.97	9.40	18.97	S76° 10' 34" E
C5	23° 21' 55"	500.00	203.80	103.39	202.49	S32° 59' 11" E
C6	15° 15' 07"	500.00	133.10	66.95	132.71	S13° 40' 32" E
C7	01° 28' 40"	500.00	12.89	6.45	12.89	S05° 18' 37" E
C8	15° 48' 00"	50.00	13.79	6.94	13.74	S12° 28' 26" E
C9	52° 52' 35"	50.00	46.14	24.86	44.52	S46° 48' 43" E
C10	96° 20' 25"	60.00	100.89	67.04	89.42	S25° 04' 49" E
C11	53° 31' 47"	60.00	56.06	30.26	54.04	S49° 51' 17" W
C12	28° 57' 38"	60.00	30.33	15.40	30.01	N88° 54' 00" W
C13	26° 38' 22"	60.00	27.90	14.21	27.65	N61° 06' 01" W
C14	43° 13' 27"	60.00	45.26	23.77	44.20	N26° 10' 06" W
C15	13° 46' 01"	450.00	108.13	54.32	107.87	N11° 27' 27" W
C16	21° 46' 32"	450.00	171.03	86.56	170.00	N129° 13' 44" W
C17	04° 33' 08"	450.00	35.75	17.89	35.74	N42° 23' 35" W
C18	02° 38' 51"	250.00	11.55	5.78	11.55	N45° 59' 34" W
C19	41° 28' 00"	250.00	180.93	94.63	177.01	N68° 03' 00" W
C20	44° 10' 13"	250.00	192.73	101.44	187.99	S69° 07' 53" W
C21	20° 58' 04"	250.00	91.49	42.26	90.98	S36° 33' 45" W



07.21.96-13.30 GLA54P01



5248 Olde Towne Road, Suite 1  
Williamsburg, Virginia 23188  
(804) 253-0040  
Fax (804) 220-8994

PLAT OF  
RIVER REACH - BLOCK 'A'  
THE  
GOVERNOR'S LAND  
*At Two Rivers*  
JAMES CITY COUNTY  
VIRGINIA



No.	DATE	REVISION / COMMENT / NOTE	BY

Designed	Drawn
VMB	CLJ
Scale	Date
1" = 100'	JULY, 1996
Project No.	7173-5-4
Drawing No.	3 OF 4

