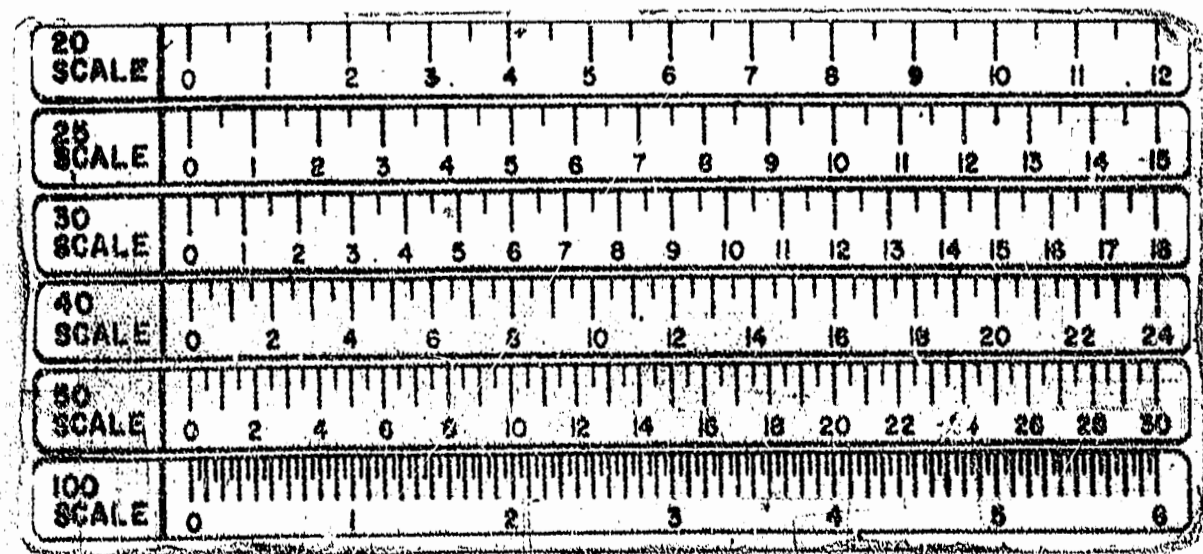
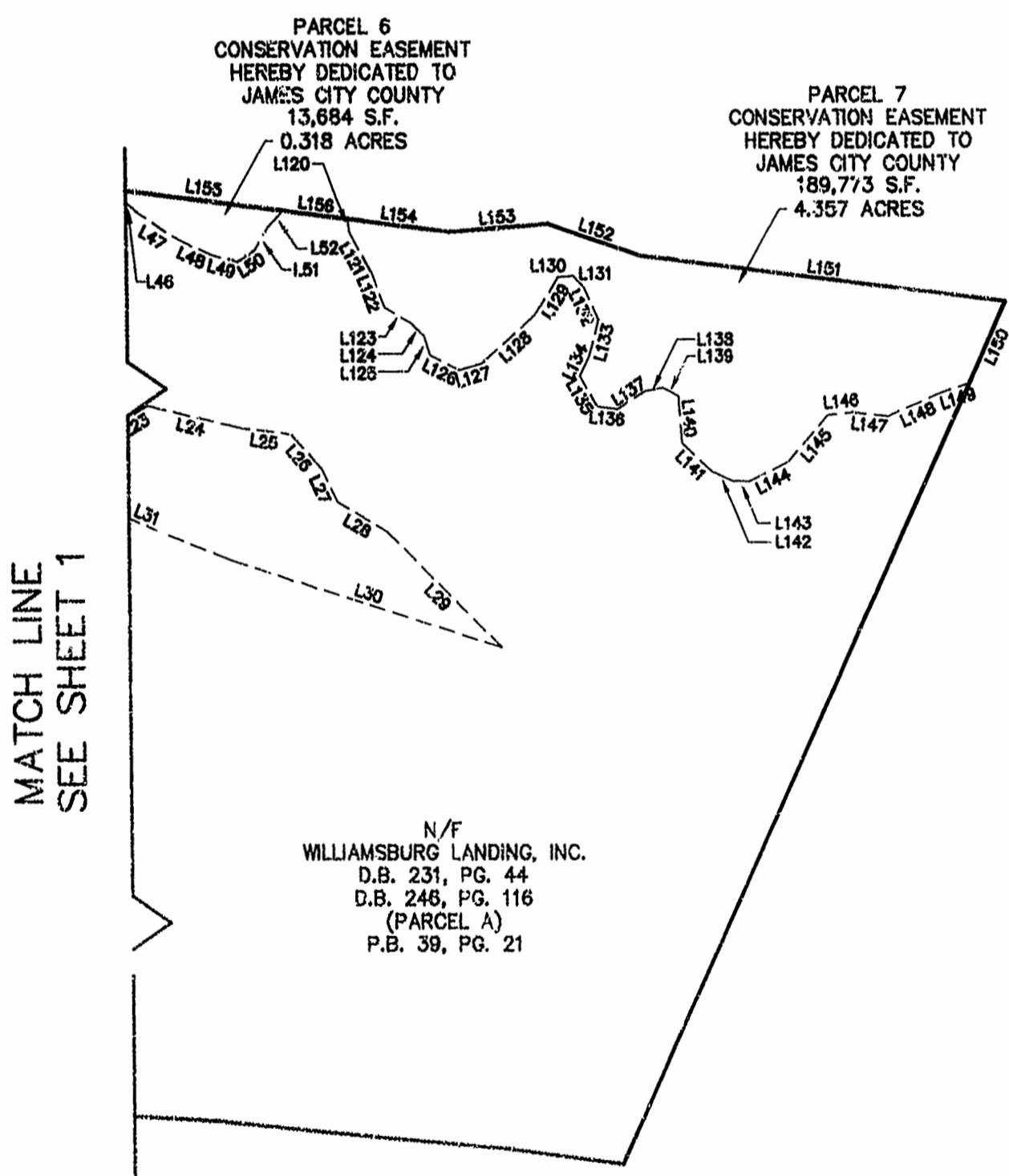


NUMBER	BEARING	DIST	NUMBER	BEARING	DIST	NUMBER	BEARING	DIST	NUMBER	BEARING	DIST	NUMBER	BEARING	DIST
L11	N28°38'59"E	314.41'	L30	S72°44'08"E	442.97'	L63	S18°04'42"E	17.57'	L92	N01°14'55"E	35.55'	L121	N29°32'54"W	89.88'
L12	N42°50'36"W	92.67'	L31	S68°37'02"E	294.62'	L64	N52°23'37"E	56.46'	L93	N14°40'53"W	84.22'	L122	N20°32'08"W	54.98'
L13	N87°13'03"W	50.86'	L32	S68°17'25"E	180.57'	L65	S80°18'48"W	104.40'	L94	N30°57'17"E	34.76'	L123	S60°57'44"E	48.01'
L14	S87°49'09"W	41.40'	L33	S85°25'07"E	184.05'	L66	N82°59'32"W	350.00'	L95	N10°10'44"W	80.99'	L124	N44°36'19"W	27.18'
L15	S71°48'43"W	59.31'	L34	S53°29'28"E	190.47'	L67	N63°41'52"W	105.95'	L96	N11°28'28"W	30.29'	L125	N18°22'24"W	30.39'
L16	N83°12'25"W	58.34'	L35	S45°53'16"E	28.79'	L68	N82°59'27"W	84.76'	L97	N73°44'54"W	75.58'	L126	N83°25'38"W	45.65'
L17	N64°48'26"W	47.50'	L40	N73°03'08"W	58.01'	L69	N50°18'23"E	81.44'	L98	S48°08'42"W	39.25'	L127	S74°24'30"W	37.17'
L18	N55°59'29"W	61.00'	L41	S83°33'30"W	47.14'	L70	N85°14'18"E	93.74'	L99	S00°52'48"E	98.89'	L128	S48°05'33"W	111.81'
L19	N62°42'35"W	44.10'	L42	N81°53'01"E	24.27'	L71	N33°42'08"E	37.41'	L100	S68°55'40"W	72.03'	L129	S33°06'33"W	85.90'
L20	N15°47'12"W	60.41'	L43	N58°41'03"E	4.62'	L72	N24°47'34"W	31.27'	L101	S47°24'45"W	38.94'	L130	S83°38'38"W	13.07'
L21	N63°26'39"W	42.40'	L44	N82°59'27"W	180.07'				L102	S74°03'27"W	84.78'	L131	N43°41'08"W	22.84'
L22	WEST	37.93'	L45	N30°22'21"W	16.57'	L74	N03°29'02"E	67.26'	L103	S28°38'48"W	34.88'	L132	N24°09'27"W	64.79'
L23	S60°15'54"W	61.15'	L46	N49°28'31"W	32.18'	L75	N65°56'14"E	85.39'	L104	S04°02'49"E	67.08'	L133	N15°05'43"E	58.71'
L24	N77°02'51"W	148.59'	L47	S57°53'12"E	77.48'	L76	N55°09'10"E	41.88'	L105	S82°23'37"W	94.50'	L134	N26°58'09"E	33.14'
L25	N82°59'11"W	82.79'	L48	N66°15'26"W	52.05'	L77	N12°31'44"E	48.74'	L106	S72°41'41"W	100.90'	L135	N30°43'17"W	53.81'
L26	N41°59'55"W	68.02'	L49	N 8°07'41"W	42.26'	L78	N03°48'35"E	317.80'	L107	S50°54'22"W	29.96'	L136	N84°53'08"W	31.68'
L27	N26°34'27"W	56.52'	L50	S57°41'38"W	32.50'	L79	N02°28'21"W	53.09'	L108	S35°21'10"W	143.95'	L137	S37°36'54"W	49.32'
L28	N59°52'07"W	90.63'	L51	S31°17'03"W	40.11'	L80	S84°44'44"E	65.82'	L109	S40°08'35"W	70.15'	L138	S90°18'19"W	28.20'
L29	N45°32'38"W	247.28'	L52	S44°42'20"W	34.65'	L81	S22°12'48"E	92.56'	L110	S27°05'44"W	67.08'	L139	N63°00'32"W	26.02'
			L53	N55°48'48"E	73.19'	L82	S08°19'28"E	115.07'	L111	S06°27'44"W	110.22'	L140	N03°55'18"W	69.20'
			L54	N70°48'27"E	120.57'	L83	S18°38'30"E	68.38'	L112	S11°15'07"E	31.35'	L141	N46°22'07"W	83.61'
			L55	N84°20'52"E	69.63'				L113	S49°44'48"E	199.65'	L142	N68°57'05"W	35.48'
			L56	S73°10'55"E	22.36'	L85	N63°15'32"E	38.98'	L114	S67°32'39"E	74.64'	L143	S86°25'24"W	26.36'
			L57	S82°23'37"W	163.53'	L86	N03°44'18"W	124.46'	L115	S84°03'56"E	211.06'	L144	S84°31'04"W	67.55'
			L58	S01°03'48"W	91.85'	L87	N29°49'39"E	41.87'	L116	S11°28'28"E	22.43'	L145	S41°34'08"W	83.34'
			L59	N70°15'24"W	60.58'	L88	S44°53'23"E	56.12'	L117	N84°03'56"W	233.95'	L146	S84°48'11"W	38.39'
			L60	N78°55'28"W	28.87'	L89	S77°27'36"E	46.57'	L118	N67°32'39"W	69.73'	L147	N84°03'50"W	54.68'
			L61	S52°32'12"W	14.89'	L90	N48°30'24"E	120.55'	L119	N48°44'48"W	223.90'	L148	S87°05'20"W	66.23'
			L62	S53°23'03"E	58.46'	L91	N28°31'48"E	123.24'	L120	S06°56'46"E	20.52'	L149	S72°03'57"W	47.22'
												L150	S25°07'24"W	135.10'
												L151	S82°59'27"E	569.89'
												L152	S71°42'08"E	152.06'
												L153	N85°41'43"E	152.97'
												L154	S82°59'27"E	159.48'
												L155	N82°59'27"W	261.56'
												L156	S82°59'27"E	101.89'
												L157	S82°59'27"E	96.68'

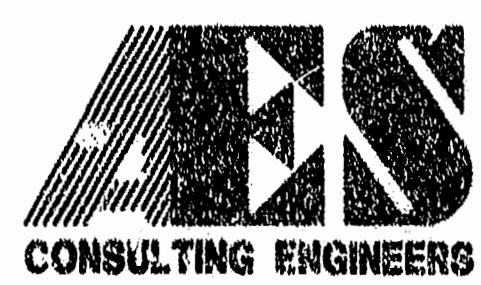
CURVE TABLE						
NUMBER	DELTA	RADIUS	LENGTH	TANGENT	CHORD	CHORD BEARING
C1	08°49'16"	1979.96	339.37	170.10	338.96	N89°19'38"W
C2	70°45'04"	784.16	931.27	535.47	673.22	N83°09'50"E
C3	11°44'44"	784.13	164.60	177.57	154.33	S55°55'16"E



PLAT RECORDED IN
P.B. NO. 65 PAGE 26, 27

Recorded 7th day of October 1968
D.B. No. 810
James Wilson, Jr.

10.03.96-16.07 81622P02



5248 Old Towne Road, Suite 1
Williamsburg, Virginia 23188
(804) 253-0040
Fax (804) 220-8994

PLAT SHOWING
CONSERVATION EASEMENT
FOR DEDICATION
TO JAMES CITY COUNTY
OWNED BY: WILLIAMSBURG LANDING, INC.

JAMES CITY COUNTY VIRGINIA



No.	DATE	REVISION / COMMENT / NOTE	BY

Designed N/A	Drawn SCL
Scale 1"=200'	Date 8/17/96
Project No. 8162	
Drawing No. 2 OF 2	