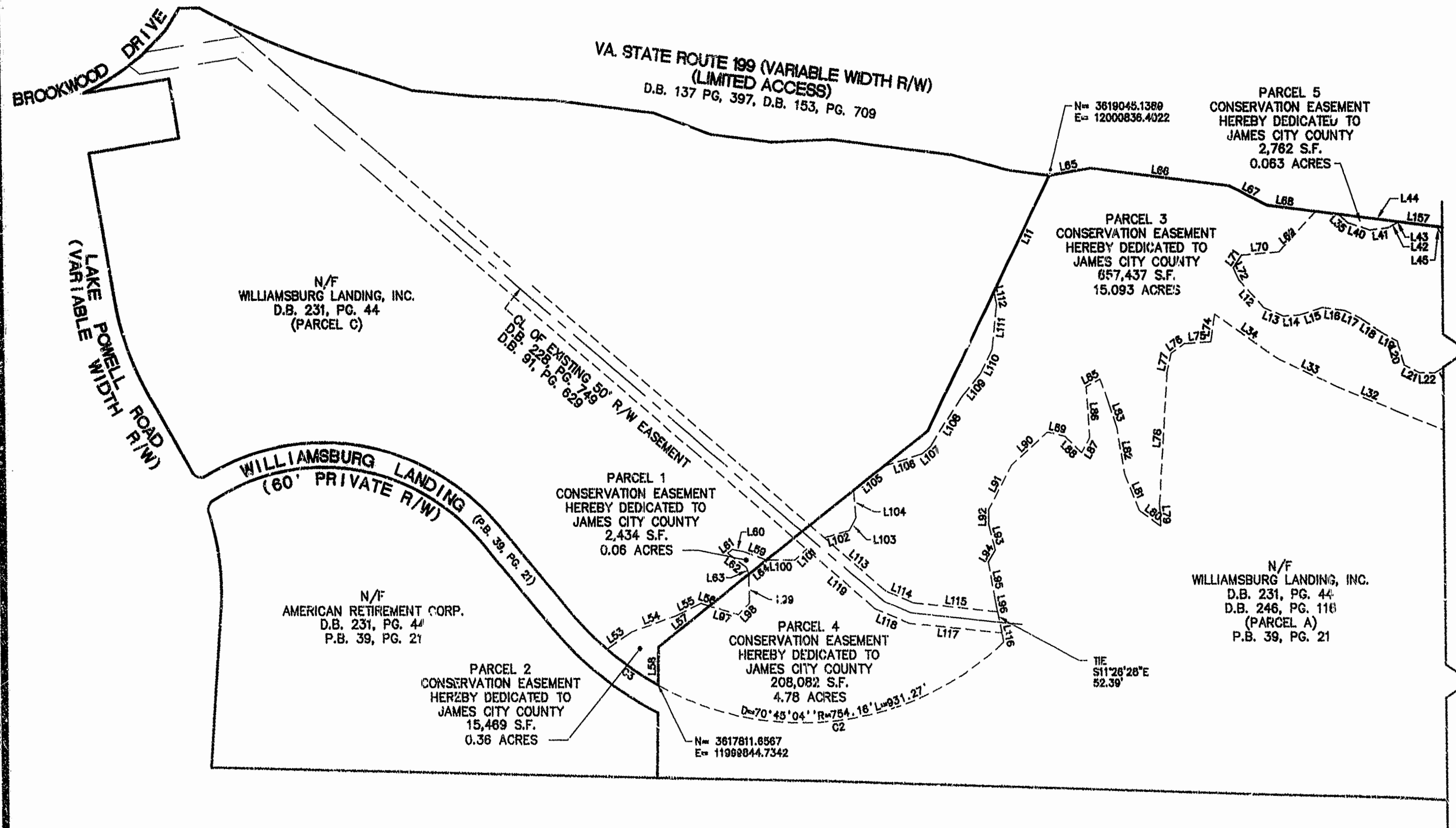
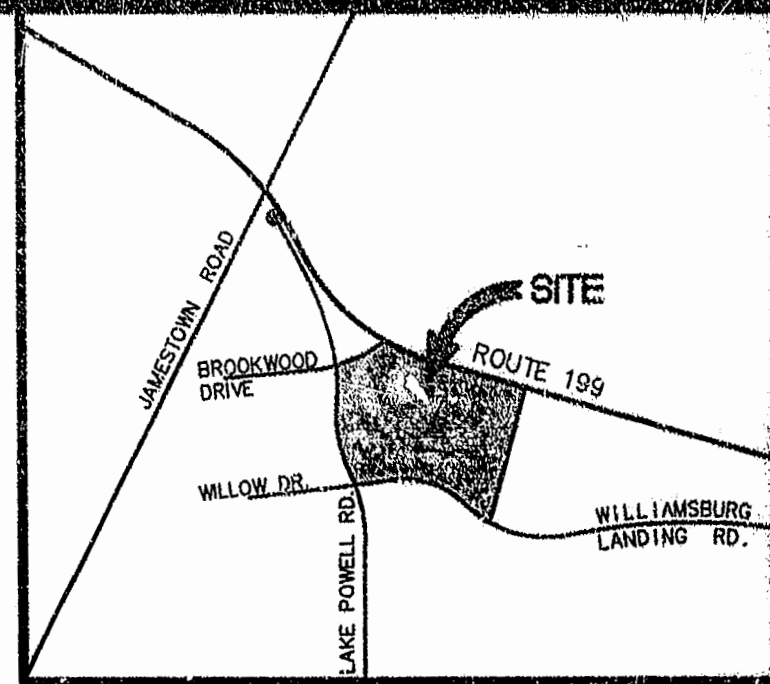
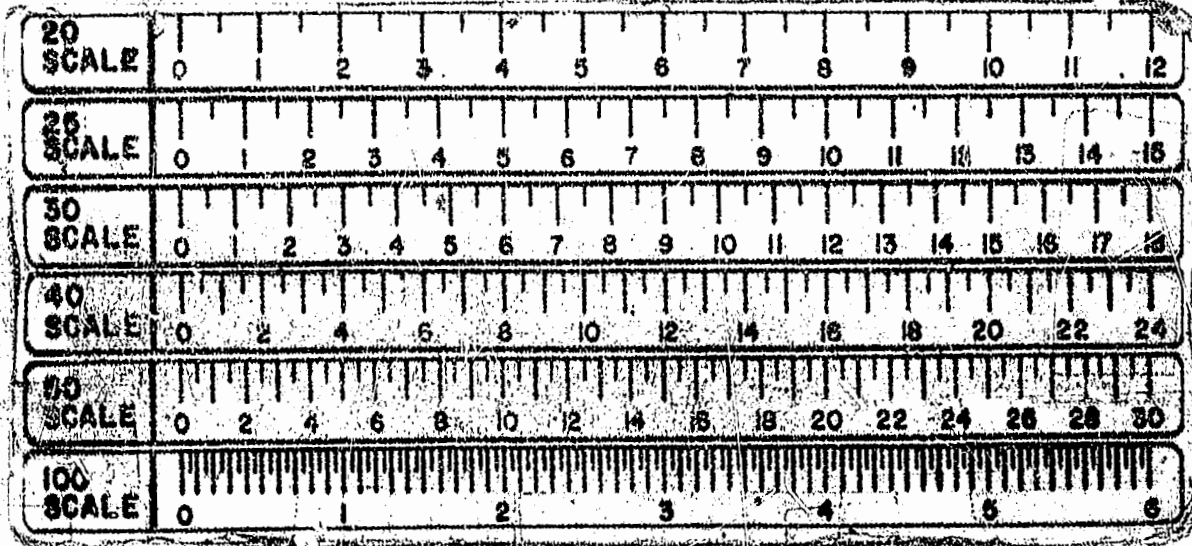


NOTE:

1. THE COORDINATES SHOWN ON THIS SURVEY WERE ESTABLISHED FROM STATION 332 OF THE JAMES CITY COUNTY PRIMARY SERVICE AREA GEODETIC GROUND CONTROL NETWORK. (NAD 83 - SOUTH ZONE)
2. PARCELS SHOWN AS 1 AND 2 ARE A PART OF PARCEL "C". PARCELS 3, 4, 5, 6, 7 AND 8 ARE A PART OF PARCEL "A". TOTAL AREA DEDICATED 25.01 ACRES

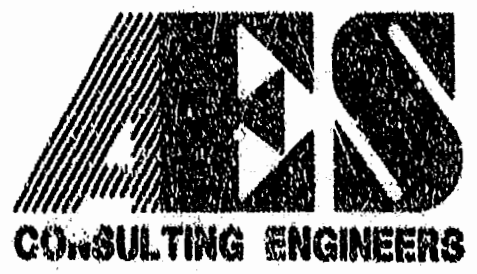


MATCH LINE
SEE SHEET 2

PLAT RECORDED IN
P.B. NO. 65

Recorded 74
D.B. No. 810
Date 8/17/98

10.03.96-1424 81622P01



5248 Olde Towne Road, Suite 1
Williamsburg, Virginia 23188
(804) 253-0040
Fax (804) 220-3994

PLAT SHOWING
CONSERVATION EASEMENT
FOR DEDICATION
TO JAMES CITY COUNTY
OWNED BY: WILLIAMSBURG LANDING, INC.
JAMES CITY COUNTY VIRGINIA



No.	DATE	REVISION / COMMENT / NOTE	BY

Designed N/A	Drawn SCL
Scale 1"=200'	Date 8/17/98
Project No. 8162	
Drawing No. 1 OF 2	