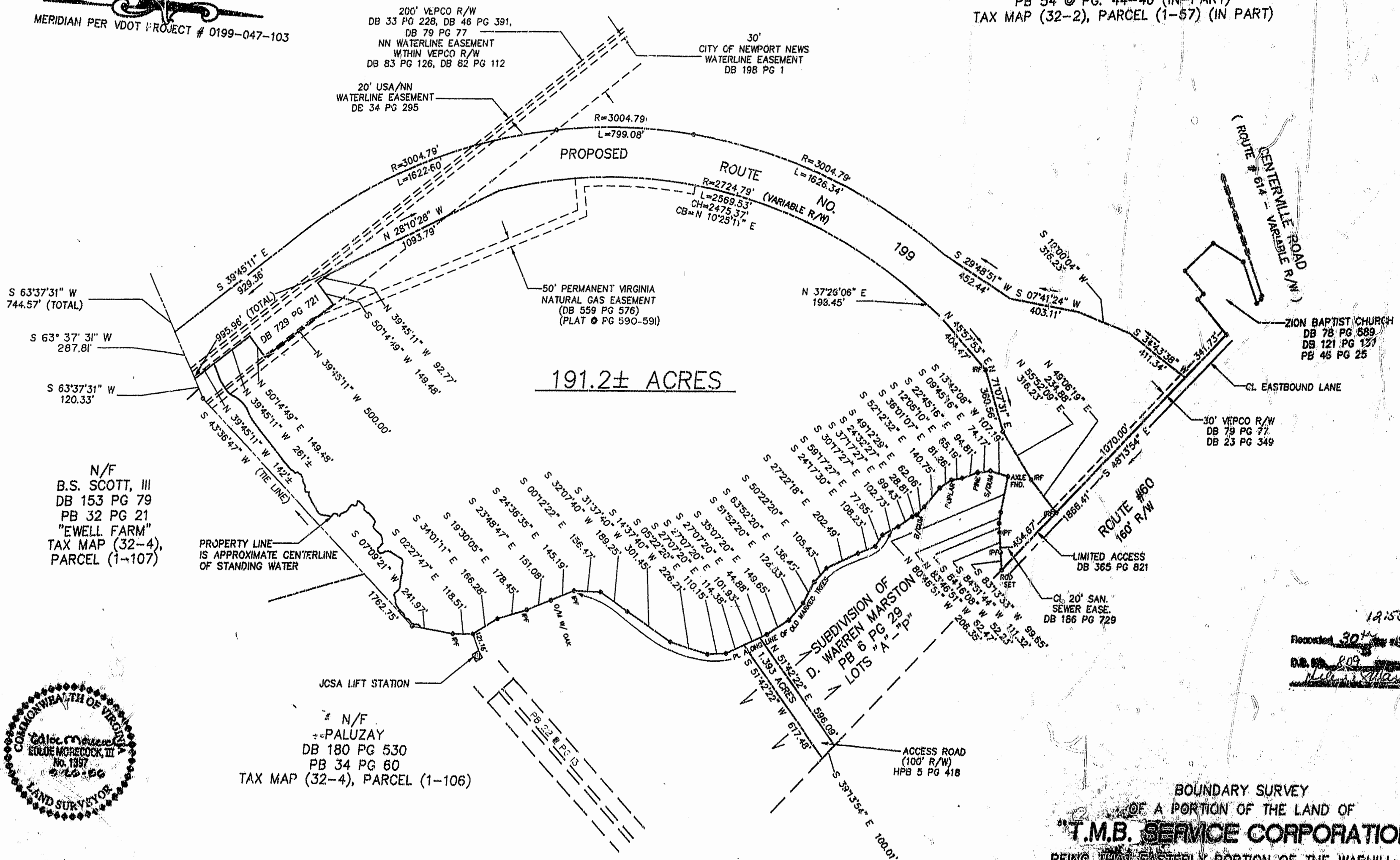


BOOK 65 PAGE 18

MERIDIAN PER VDOT PROJECT # 0199-047-103

N/F
 T.M.B. SERVICE CORPORATION
 "WARHILL TRACT"
 DB 664 @ PG. 186 (IN PART),
 PB 54 @ PG. 44-46 (IN PART)
 TAX MAP (32-2), PARCEL (1-57) (IN PART)



S 63°37'31" W
744.57' (TOTAL)
 S 63° 37' 31" W
287.81'
 S 63°37'31" W
120.33'
 N/F
 B.S. SCOTT, III
 DB 153 PG 79
 PB 32 PG 21
 "EWELL FARM"
 TAX MAP (32-4),
 PARCEL (1-107)

N/F
 PALUZAY
 DB 180 PG 530
 PB 34 PG 60
 TAX MAP (32-4), PARCEL (1-106)

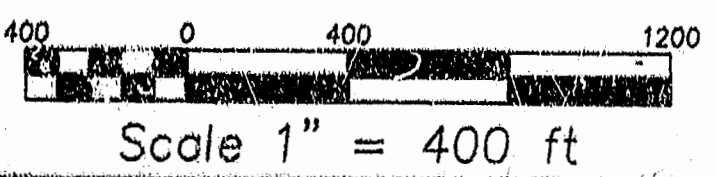
ZION BAPTIST CHURCH
 DB 78 PG 589
 DB 121 PG 137
 PB 46 PG 25



12:55 PM
 Recorded 30th Sept 1996
 DB 664
 PB 54
 N. B. ...

CURRENT OWNER & REFERENCES:
 N/F T.M.B. SERVICE CORPORATION
 D.B. 664 @ PG. 186, P.B. 04 @ PGS. 44-46
 TAX MAP (32-2), PARCEL (1-57) - IN PART

BOUNDARY SURVEY
 OF A PORTION OF THE LAND OF
 "T.M.B. SERVICE CORPORATION"
 BEING THE EASTERLY PORTION OF THE WARHILL TRACT
 JAMES CITY COUNTY, BERKELEY DISTRICT, VIRGINIA



COMPUTER NUMBER: H:\46\98108\98108\PLT

PLAT RECORDED IN
 P.B. NO. 65 PAGE 18

SCALE: 1"=400'
 4/10/96
Rickmond Engineering, Inc.
 1643-C Merrimac Trail
 Williamsburg, VA 23185
 (804)229-1778 or 898-4149
 Civil Engineering
 Environmental Engineering
 Land Surveying