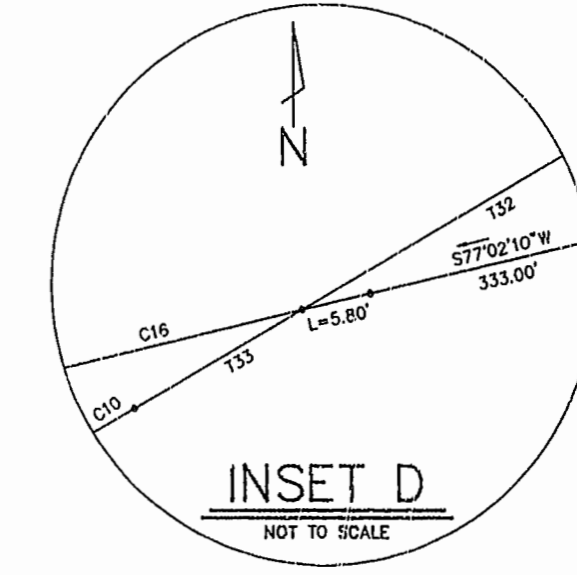
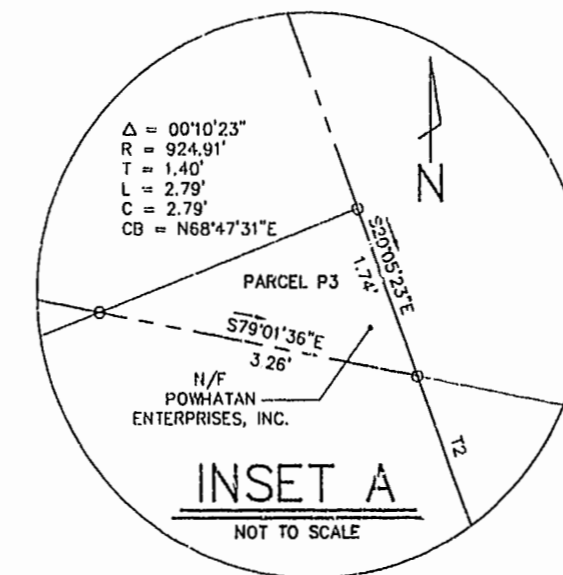
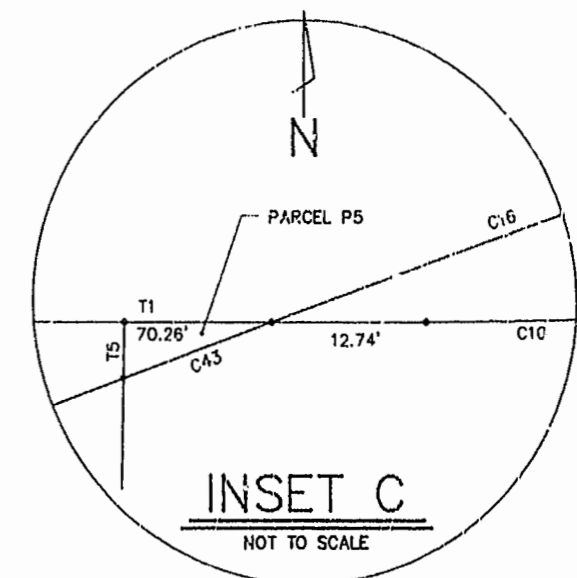
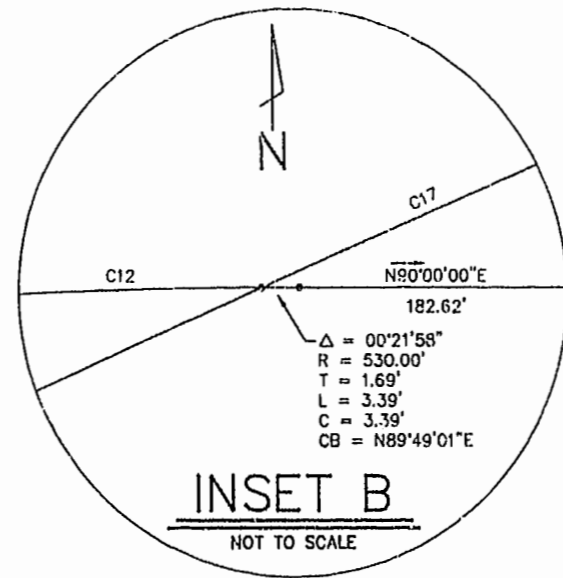
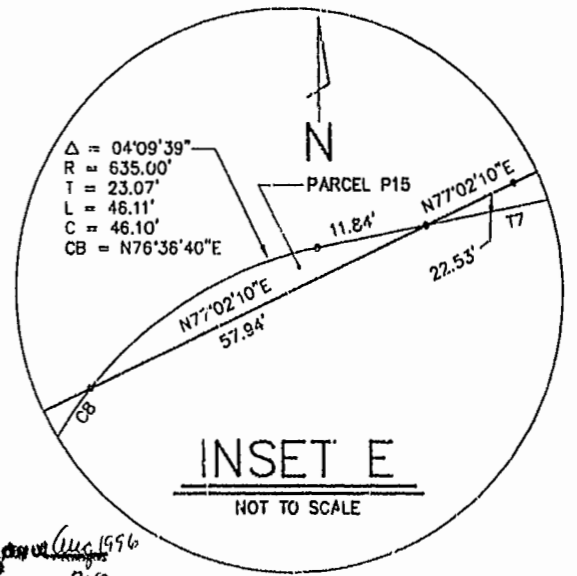
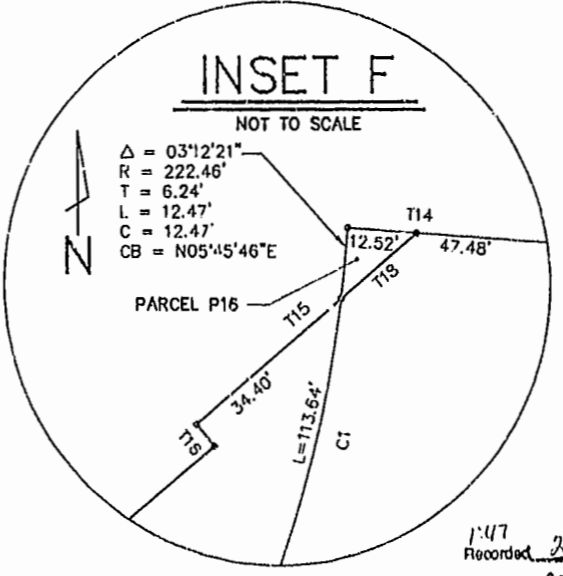


CURVE	RADIUS	LENGTH	TANGENT	CHORD	BEARING	DELTA
C1	222.96'	126.11'	64.79'	124.43'	N20°21'49"E	32°24'28"
C2	187.51'	104.51'	53.65'	103.16'	N89°20'53"E	31°56'00"
C3	267.51'	167.56'	86.63'	164.83'	N87°49'44"E	35°53'19"
C4	208.08'	183.89'	98.44'	177.97'	N61°53'18"E	50°38'31"
C5	268.06'	236.93'	126.83'	229.29'	N61°53'18"E	50°38'31"
C6	706.42'	105.02'	52.61'	104.93'	S82°57'01"W	08°31'05"
C7	646.42'	96.10'	48.14'	96.01'	S82°57'01"W	08°31'05"
C8	635.00'	203.94'	102.85'	203.06'	S69°29'27"W	18°24'04"
C9	575.00'	184.67'	93.13'	183.87'	S69°29'27"W	18°24'04"
C10	400.00'	207.41'	106.09'	205.10'	N75°08'42"E	29°42'35"
C11	340.00'	176.30'	90.18'	174.33'	N75°08'42"E	29°42'35"
C12	530.00'	64.32'	32.20'	64.28'	S86°31'25"W	06°57'11"
C13	470.00'	57.04'	28.55'	57.00'	S86°31'25"W	06°57'11"
C14	1368.20'	644.05'	328.10'	638.12'	N63°33'03"E	26°58'14"
C15	1488.20'	700.53'	356.88'	694.08'	N63°33'03"E	26°58'14"
C16	216°47'	340.36'	170.53'	340.01'	S72°31'45"W	09°00'50"
C17	22°44'	667.68'	336.24'	665.30'	S88°39'35"W	16°45'11"
C18	2163.47'	292.23'	146.34'	292.01'	S64°09'10"W	07°44'21"
C19	1064.91'	55.78'	27.90'	55.78'	N61°47'01"E	03°00'05"
C20	944.91'	111.94'	56.03'	111.87'	N63°40'36"E	06°47'14"
C21	1064.91'	123.29'	61.71'	123.22'	N66°36'03"E	06°37'59"
C22	1064.91'	747.63'	389.96'	732.37'	S89°58'12"E	40°13'30"
C23	924.91'	666.12'	348.24'	651.81'	N89°30'37"E	41°15'51"
C24	1071.15'	1194.83'	668.18'	1133.84'	S78°11'12"W	63°54'41"
C25	1211.15'	1351.00'	755.51'	1282.04'	S78°11'12"W	63°54'41"
C26	1211.15'	231.86'	116.29'	231.51'	N75°20'31"W	10°58'07"
C27	25.00'	33.70'	19.97'	31.21'	S67°09'09"W	77°14'28"
C28	282.96'	39.68'	19.87'	39.65'	N32°32'59"E	08°02'08"
C29	267.51'	26.97'	13.50'	26.96'	S77°06'54"E	05°46'34"
C30	25.00'	34.40'	20.55'	31.75'	S35°15'45"E	78°50'41"
C31	1488.20'	95.25'	47.64'	95.24'	N51°53'57"E	03°40'02"
C32	1371.15'	1569.40'	883.31'	1485.13'	S63°35'53"W	65°34'48"
C33	944.91'	27.38'	13.69'	27.38'	N67°54'02"E	01°39'38"
C35	990.27'	565.92'	290.92'	558.25'	S78°08'13"E	32°44'36"
C36	1130.27'	1420.41'	821.24'	1328.77'	N82°13'58"E	72°00'13"
C37	990.27'	678.55'	339.21'	665.36'	N65°51'40"E	39°15'37"
C38	1071.15'	109.72'	54.91'	109.67'	S49°09'56"W	05°52'08"
C39	276.81'	98.35'	49.70'	97.83'	S80°03'47"W	20°21'24"
C40	864.93'	105.53'	52.83'	105.46'	S53°33'39"W	06°59'26"
C41	187.51'	11.60'	5.80'	11.60'	N71°36'34"E	03°32'37"
C42	1211.15'	1119.13'	603.10'	1079.74'	S72°42'09"W	52°56'34"
C43	2163.47'	75.86'	37.93'	75.85'	S69°01'36"W	02°00'32"
C44	1071.15'	989.11'	532.98'	954.34'	S78°33'13"W	52°54'27"
C45	1130.27'	774.48'	403.14'	759.42'	N65°51'40"E	39°15'37"
C46	276.81'	38.35'	19.20'	38.32'	S73°51'12"W	07°56'15"
C47	276.81'	60.00'	30.12'	59.88'	S84°01'54"W	12°25'29"



LINE	DIRECTION	DISTANCE
T1	N90°00'00"W	182.62'
T2	S20°05'23"E	18.27'
T3	N81°32'45"E	41.78'
T4	N69°51'27"W	36.69'
T5	N01°11'34"E	27.16'
T6	S78°41'29"W	132.96'
T7	N78°41'29"E	132.96'
T8	S87°12'34"W	132.37'
T9	S87°12'34"W	132.37'
T10	S36°34'03"W	104.61'
T11	N36°34'03"E	104.61'
T12	S50°03'56"W	163.68'
T13	N39°56'04"W	5.00'
T14	S85°50'25"E	60.00'
T15	S50°03'56"W	52.32'
T16	S39°56'04"E	5.00'
T17	S77°02'10"W	12.75'
T18	S50°03'56"W	17.92'
T19	N69°51'27"W	132.14'
T20	S53°47'24"E	1.65'
T21	S79°01'22"E	30.88'
T22	S46°13'52"W	200.00'
T23	S46°13'52"W	40.06'
T24	S46°13'52"W	159.94'
T25	S04°30'31"E	122.53'
T26	N69°53'05"E	99.85'
T27	S45°04'21"E	62.60'
T28	S89°09'05"E	27.79'
T29	N50°03'56"E	57.52'
T30	N34°06'40"W	64.73'
T31	N77°02'10"E	252.53'
T32	N60°17'26"E	125.75'
T33	S60°17'26"W	42.45'
T34	S13°55'01"E	52.45'



THIS PLAT DOES NOT CONSTITUTE A SUBDIVISION FOR PARCELS P5, P6, P8, P10, P11, AND P12. IT IS SHOWN FOR FUTURE REFERENCE ONLY, AND THEREFORE DOES NOT REQUIRE OWNER SIGNATURES. FUTURE SUBDIVISIONS, IF ANY, WILL OCCUR BY DEED REFERENCES TO THIS PLAT.

PLAT OF PARCELS ALONG RELOCATED ROUTE 5 CORRIDOR IN, THROUGH AND ADJACENT TO POWHATAN SECONDARY OF WILLIAMSBURG BERKELEY DISTRICT JAMES CITY COUNTY, VIRGINIA DATE: 3/12/96 SCALE: 1"=100' SHEET 4 OF 4



Langlely and McDonald, P.C.

Engineers - Surveyors - Planners  
Landscape Architects - Environmental Consultants

VIRGINIA BEACH

WILLIAMSBURG

1:47  
Recorded 22 Aug 1996  
D.B. No. 803  
Langlely and McDonald

6021 W

