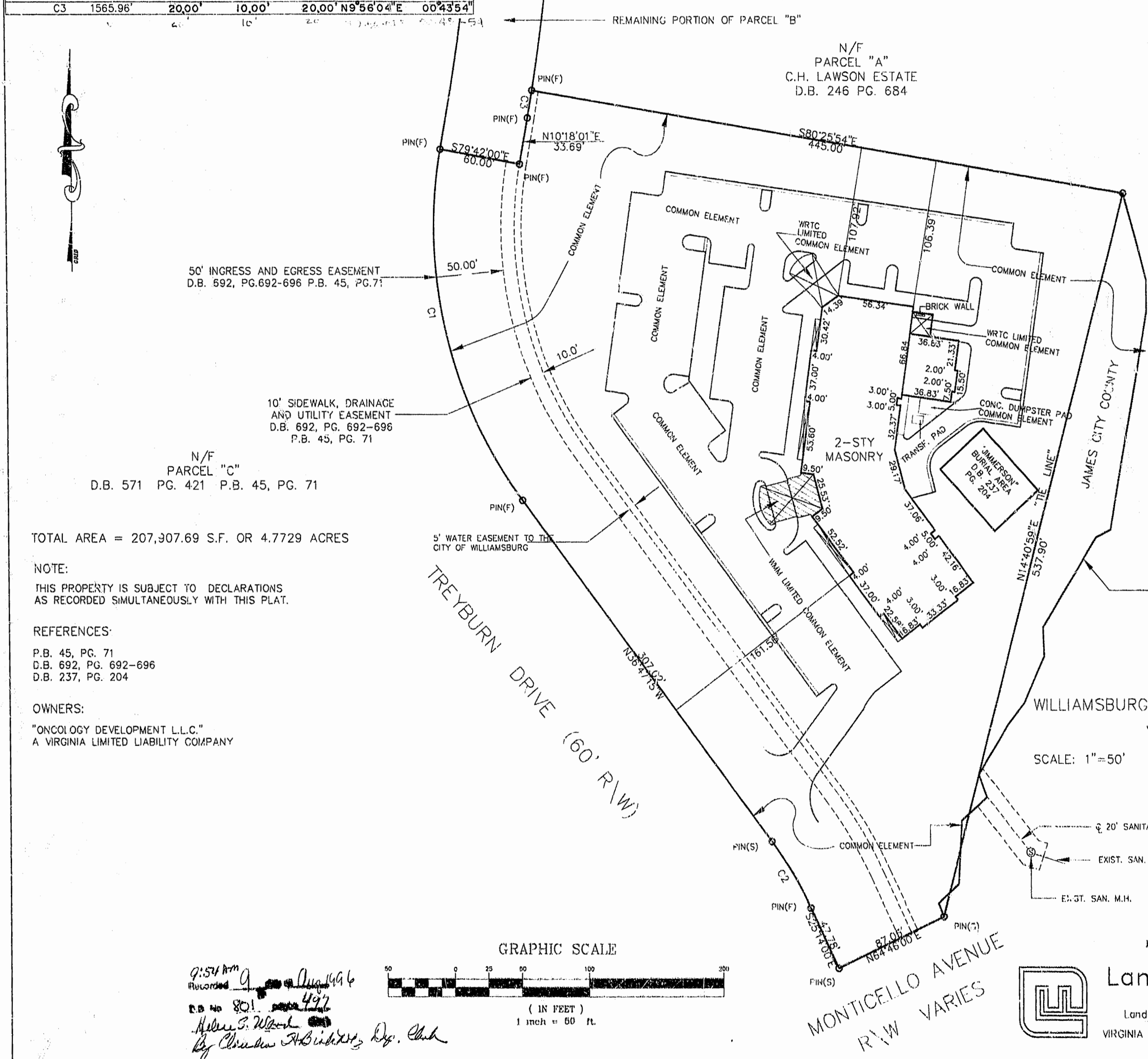
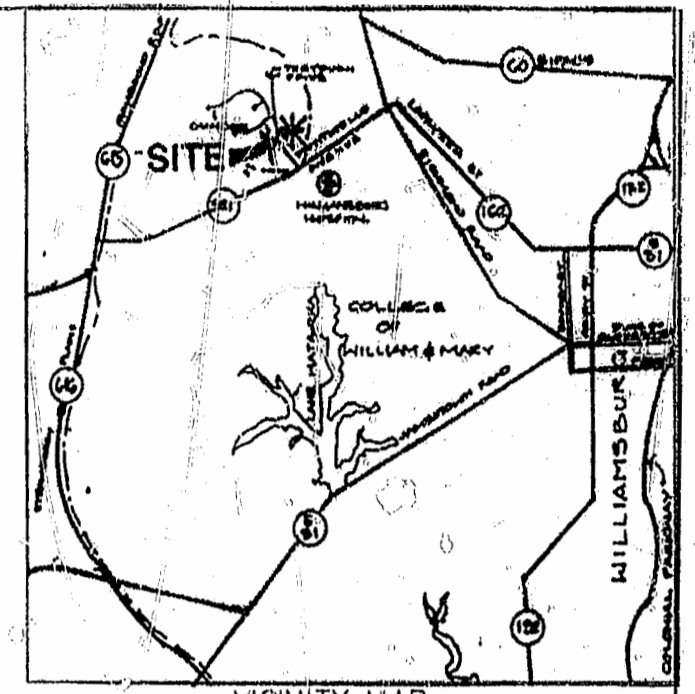


CURVE	RADIUS	LENGTH	TANGENT	CHORD	BEARING	DELTA
C1	325.00'	267.10'	141.51'	259.65'	S13°14'36"E	47°05'18"
C2	275.00'	55.45'	27.82'	55.36'	N31°00'38"W	11°33'13"
C3	1565.96'	20.00'	10.00'	20.00'	N9°56'04"E	00°43'54"



VICINITY MAP

50' INGRESS AND EGRESS EASEMENT
D.B. 692, PG. 692-696 P.B. 45, PG. 71

10' SIDEWALK, DRAINAGE
AND UTILITY EASEMENT
D.B. 692, PG. 692-696
P.B. 45, PG. 71

N/F
PARCEL "C"
D.B. 571 PG. 421 P.B. 45, PG. 71

TOTAL AREA = 207,907.69 S.F. OR 4.7729 ACRES

NOTE:
THIS PROPERTY IS SUBJECT TO DECLARATIONS
AS RECORDED SIMULTANEOUSLY WITH THIS PLAT.

REFERENCES:
P.B. 45, PG. 71
D.B. 692, PG. 692-696
D.B. 237, PG. 204

OWNERS:
"ONCOLOGY DEVELOPMENT L.L.C."
A VIRGINIA LIMITED LIABILITY COMPANY

NOTE: LISTING OF THE COMMON ELEMENTS
AND THE LIMITED COMMON ELEMENTS ARE
FOR ILLUSTRATION PURPOSES ONLY AND
ARE MORE PARTICULARLY DESCRIBED IN
THE AMENDED AND RESTATED DECLARATION
OF COVENANTS AND RESTRICTIONS OF
WILLIAMSBURG PHYSICIANS' CENTER
CONDOMINIUM RECORDED IN THE CLERK'S
OFFICE OF JAMES CITY COUNTY.

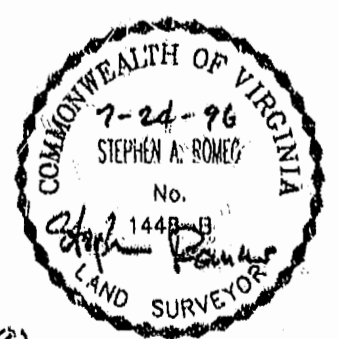
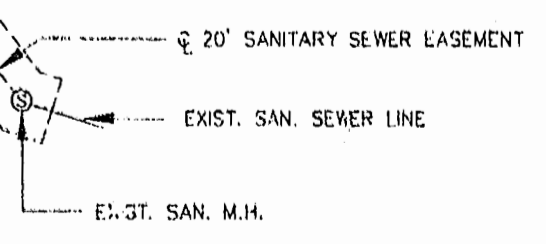
CENTERLINE OF CREEK IS PROPERTY LINE
AND POLITICAL BOUNDARY

PLAT OF
WILLIAMSBURG PHYSICIANS' CENTER CONDOMINIUM
JAMES CITY COUNTY, VIRGINIA

SCALE: 1"=50'

DATE: 7/2/96

SHEET 1 OF 2



PLAT RECORDED IN
P.B. NO. 164 PAGE 81 & 82

Langley and McDonald, P.C.
Engineers - Surveyors - Planners
Landscape Architects - Environmental Consultants
VIRGINIA BEACH WILLIAMSBURG

9:54 AM
Recorded
D.B. No 801
By Charles A. Bickel, Jr., Esq.

