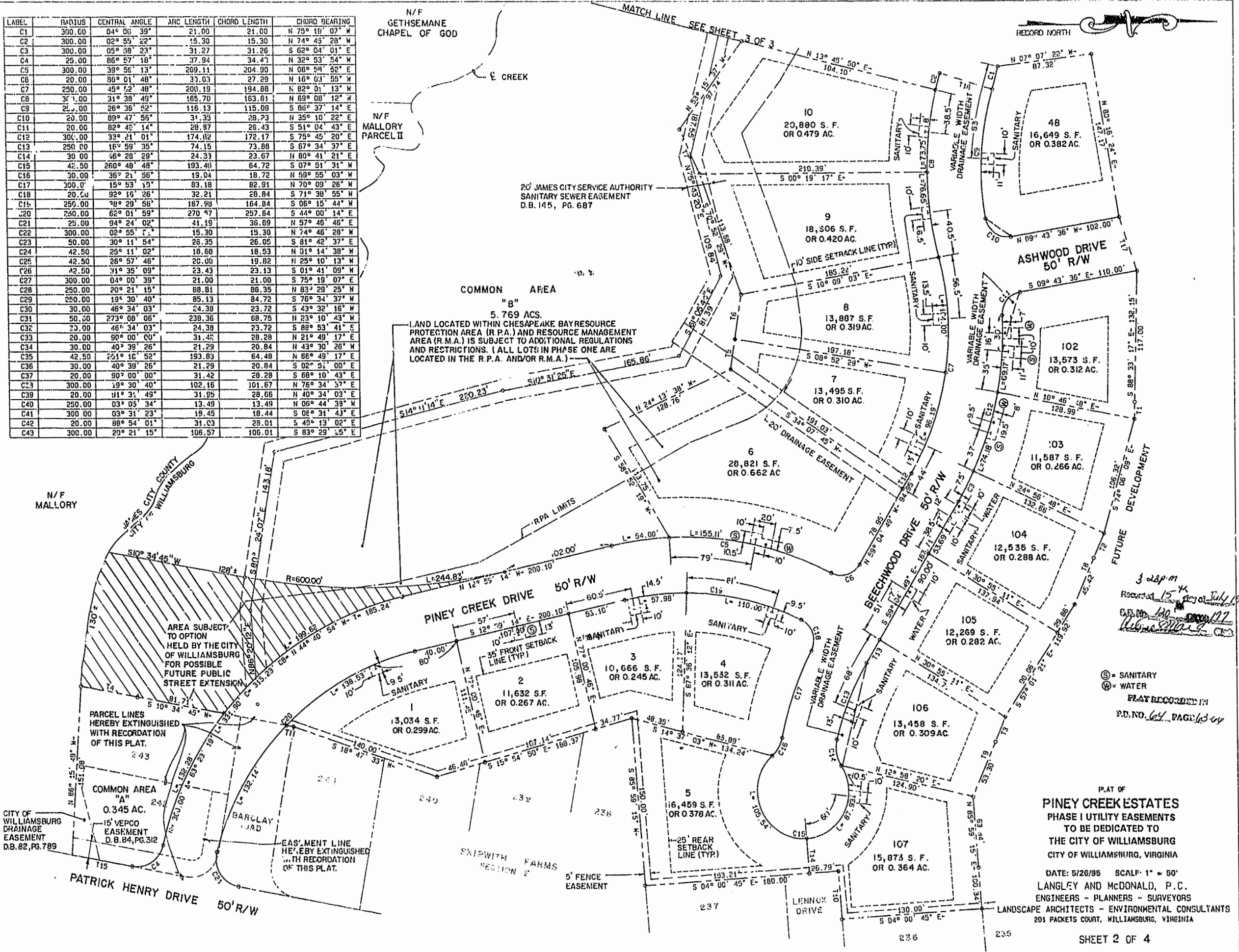


LABEL	RADIUS	CENTRAL ANGLE	ARC LENGTH	CHORD LENGTH	CHORD BEARING
C1	300.00	04° 06' 39"	21.00	21.00	N 75° 10' 07" W
C2	300.00	02° 59' 22"	15.30	15.30	N 74° 45' 20" W
C3	300.00	05° 58' 23"	31.27	31.26	S 62° 04' 01" E
C4	25.00	86° 57' 10"	17.94	34.47	N 32° 53' 54" W
C5	300.00	39° 56' 13"	209.11	204.90	N 08° 59' 52" E
C6	20.00	96° 01' 46"	31.03	27.29	N 16° 03' 55" W
C7	250.00	45° 52' 48"	200.19	194.88	N 82° 01' 13" W
C8	31.00	31° 38' 49"	165.70	163.61	N 89° 08' 12" W
C9	25.00	26° 36' 52"	116.13	115.09	S 86° 37' 14" E
C10	20.00	89° 47' 56"	31.33	28.23	N 35° 10' 22" E
C11	20.00	02° 42' 14"	28.87	26.43	S 51° 04' 43" E
C12	300.00	33° 21' 01"	174.12	172.17	S 75° 45' 20" E
C13	250.00	16° 59' 35"	74.15	73.88	S 67° 34' 37" E
C14	30.00	46° 20' 29"	24.33	23.67	N 80° 41' 21" E
C15	42.50	260° 48' 48"	193.40	64.72	S 07° 51' 31" W
C16	30.00	36° 21' 56"	19.04	18.72	N 59° 55' 03" W
C17	300.00	15° 53' 19"	83.18	82.91	N 70° 09' 26" W
C18	20.00	92° 15' 26"	32.21	28.84	S 71° 38' 55" W
C19	250.00	28° 29' 56"	187.98	164.84	S 06° 15' 44" W
C20	250.00	62° 01' 59"	270.47	257.64	S 44° 00' 14" E
C21	25.00	94° 24' 02"	41.19	36.89	N 57° 46' 46" E
C22	300.00	02° 55' 11"	15.30	15.30	N 74° 46' 28" W
C23	50.00	30° 11' 54"	26.35	26.05	S 81° 42' 37" E
C24	42.50	25° 11' 02"	18.60	18.53	N 51° 14' 38" W
C25	42.50	28° 57' 46"	26.00	19.82	N 25° 10' 13" W
C26	42.50	31° 35' 09"	23.43	23.13	S 01° 41' 09" W
C27	300.00	04° 00' 39"	21.00	21.00	S 75° 19' 07" E
C28	250.00	20° 21' 15"	88.81	86.35	N 83° 29' 25" W
C29	250.00	19° 30' 40"	85.13	84.72	S 76° 34' 37" W
C30	30.00	46° 34' 03"	24.38	23.72	S 43° 32' 16" W
C31	50.00	273° 08' 06"	238.36	68.75	N 73° 10' 43" W
C32	23.00	46° 34' 03"	24.38	23.72	S 88° 53' 41" S
C33	20.00	90° 00' 00"	31.42	28.28	N 21° 49' 17" E
C34	30.00	40° 39' 26"	21.29	20.84	N 43° 30' 26" W
C35	42.50	251° 16' 52"	193.83	64.48	N 66° 49' 17" E
C36	30.00	40° 39' 26"	21.29	20.84	S 02° 51' 00" E
C37	20.00	90° 00' 00"	31.42	28.28	S 68° 10' 43" E
C38	300.00	19° 30' 40"	102.16	101.67	N 76° 34' 37" E
C39	20.00	01° 31' 49"	31.95	28.66	N 40° 34' 03" E
C40	250.00	03° 05' 34"	13.49	13.49	N 06° 44' 38" W
C41	300.00	03° 31' 23"	18.45	18.44	S 02° 31' 43" E
C42	20.00	88° 54' 01"	31.03	28.01	S 40° 13' 02" E
C43	300.00	29° 21' 15"	106.57	106.01	S 83° 29' 15" E



RECORD NORTH

3 28 p.m.
 Recorded 15th July 1996
 D.B. 82, PG. 789
 Williamsburg, VA

⊕ = SANITARY
 ⊙ = WATER
 BEAT RECORDED IN
 P.D. NO. 64 PAGE 63-64

PLAT OF
PINE CREEK ESTATES
 PHASE I UTILITY EASEMENTS
 TO BE DEDICATED TO
 THE CITY OF WILLIAMSBURG
 CITY OF WILLIAMSBURG, VIRGINIA
 DATE: 5/20/95 SCALF: 1" = 50'
 LANGLEY AND McDONALD, P.C.
 ENGINEERS - PLANNERS - SURVEYORS
 LANDSCAPE ARCHITECTS - ENVIRONMENTAL CONSULTANTS
 201 PACKETS COURT, WILLIAMSBURG, VIRGINIA