

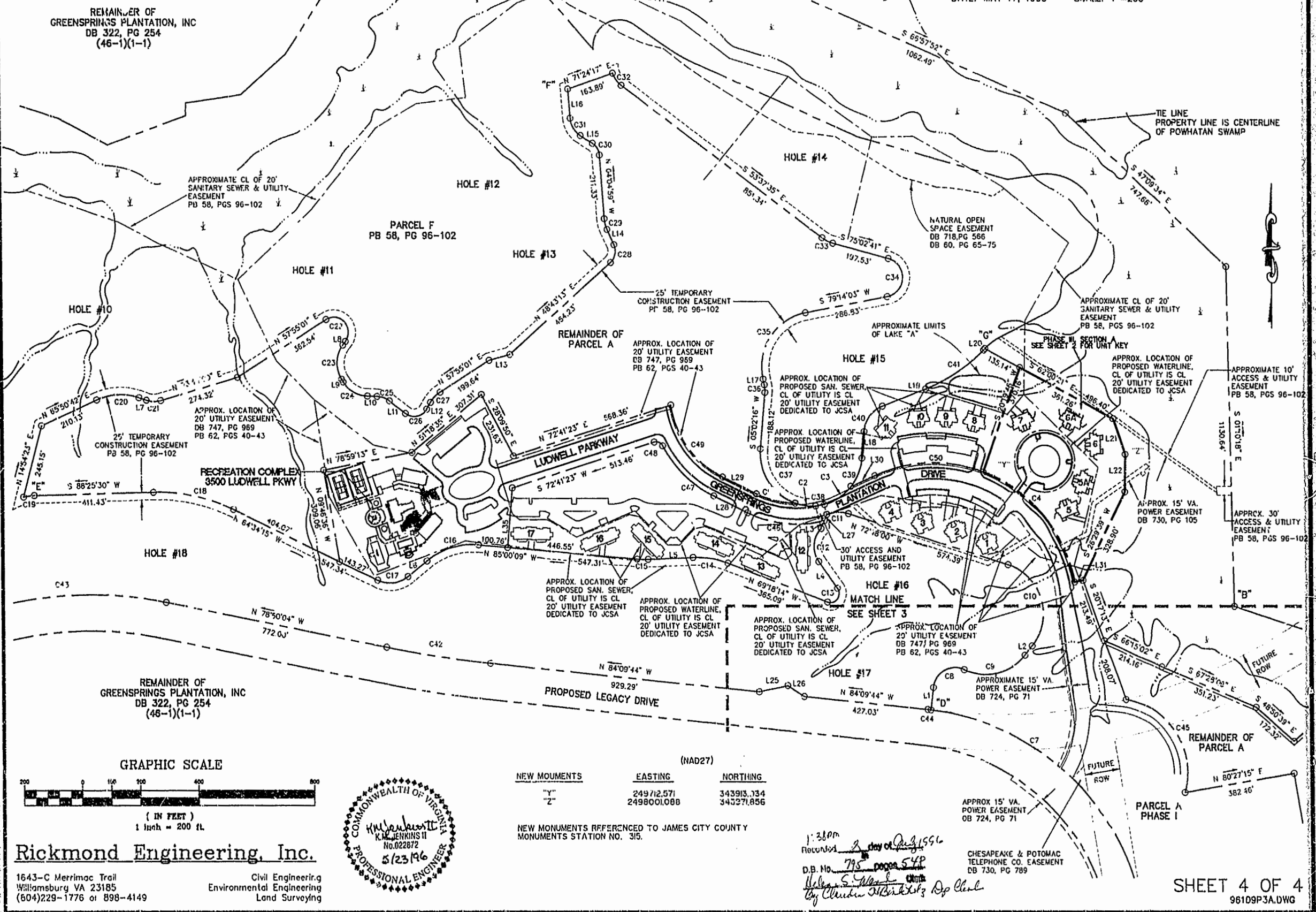
NOTES:

- 1) BUILDINGS AND ROADS ARE SHOWN FOR CONCEPTUAL PURPOSES ONLY AND DO NOT REPRESENT PHYSICAL IMPROVEMENTS.
- 2) LINES "A"- "B"- "C" PER PLAT RECORDED IN PB 54, PGS 69-70.
- 3) LINES "D"- "E"- "F"- "G" PER PLAT RECORDED IN PB 58, PGS 96-102.
- 4) LINES "H"- "I"- "J" PER PLAT TITLED "PLAT OF RIGHT-OF-WAY FOR RELOCATED STATE ROUTE 614 BEING A SUBDIVISION OF PROPERTY OF GREENSPRINGS PLANTATION, INC." BY LANGLEY AND MCDONALD, P.C. DATED 6/26/95.
- 5) SEE SHEET 2 FOR UNIT KEY.

GREENSPRINGS PLANTATION RESORT PHASE IIIA

BERKELEY DISTRICT
JAMES CITY COUNTY, VIRGINIA
DATE: MAY 17, 1996 SCALE: 1"=200'

REMAINDER OF
GREENSPRINGS PLANTATION, INC
DB 322, PG 254
(46-1)(1-1)



REMAINDER OF
GREENSPRINGS PLANTATION, INC
DB 322, PG 254
(46-1)(1-1)

GRAPHIC SCALE



(IN FEET)
1 inch = 200 ft.



	(NAD27)	
NEW MONUMENTS	EASTING	NORTHING
"Y"	249712.571	343913.134
"Z"	2498001.088	343271.856

NEW MONUMENTS REFERENCED TO JAMES CITY COUNTY MONUMENTS STATION NO. 315.

1:38 PM
Recorded 2 day of July 1996
D.B. No. 795 BOOK 548
By *[Signature]*
Chesapeake & Potomac Telephone Co. Easement DB 730, PG 789

Rickmond Engineering, Inc.

1643-C Merrimac Trail
Williamsburg VA 23185
(604)229-1776 or 898-4149

Civil Engineering
Environmental Engineering
Land Surveying

