

J.C.CO. GEODETIC CONTROL
N 3,615,088.60
E 11,989,450.61

25' LANDSCAPE PROTECTION /
CONSERVATION EASEMENT
5,081 S.F.
0.12 AC.
100' B.S.L. FROM
JAMESTOWN ROAD R/W
FOR LOTS #19 AND #20

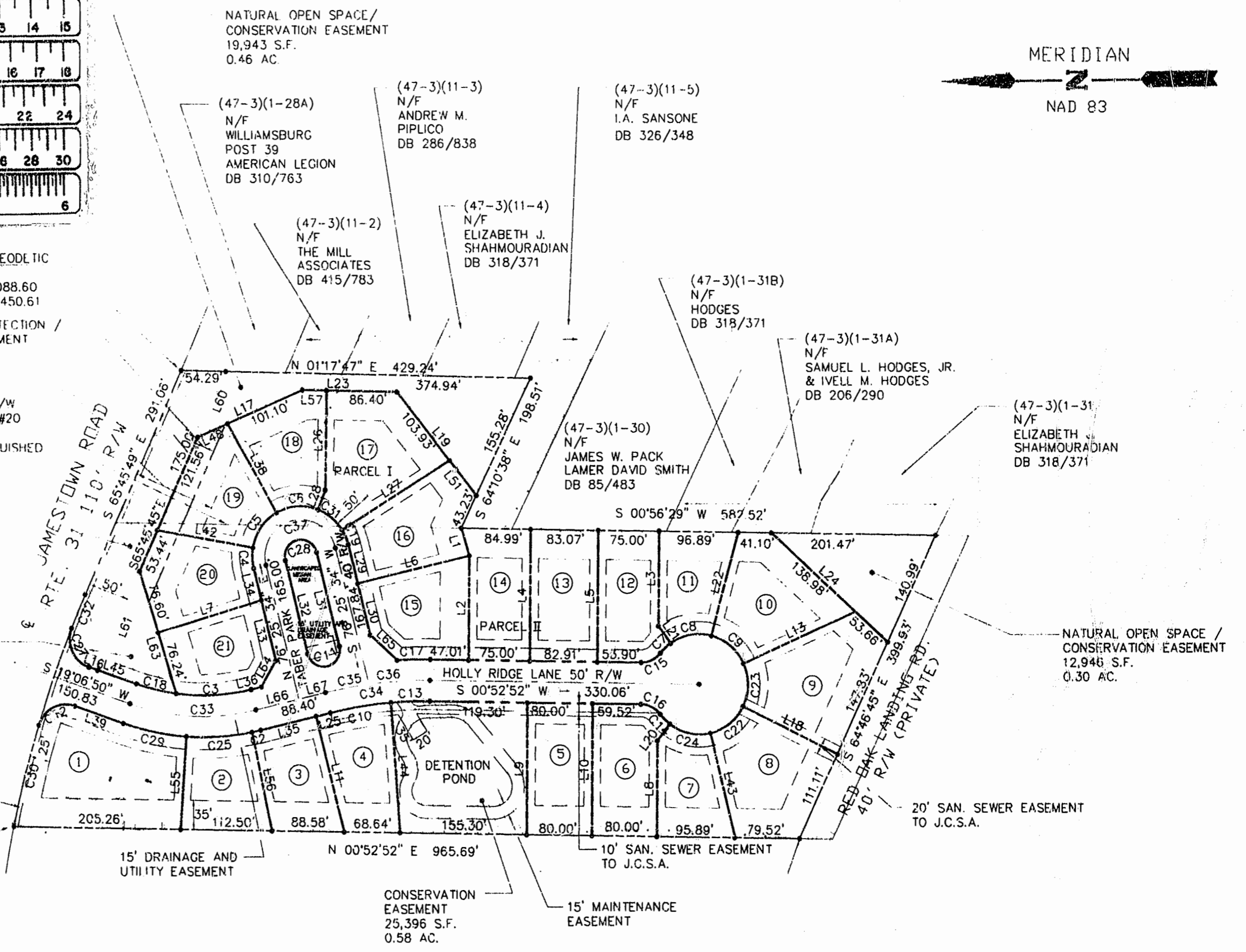
PROPERTY LINE HEREBY EXTINGUISHED

50' GREENBELT BUFFER /
CONSERVATION EASEMENT
18,765 S.F.
0.43 AC.

NATURAL OPEN SPACE /
CONSERVATION EASEMENT
6,647 S.F.
0.15 AC.

DB. 57; PG. 75
VEPCO EASEMENT
UNSPECIFIED WIDTH

J.C.CO. GEODETIC CONTROL
N 3,615,299.76
E 11,988,905.69



GRAPHIC SCALE



3:02 PM
Recorded 28 June 1996
D.B. No. 794
Edene R. M. ...

COMMISSION NO. 1950620



ENGINEERS • ARCHITECTS • SURVEYORS
INTERIOR DESIGNERS • PLANNERS
P.O. BOX 1505 WILLIAMSBURG, VIRGINIA 23187
(804)253-0673 (804)874-5015

Thomas C. ...
5/6/96

REF.
DB 217/86
PB 13/2

PLAT RECORDED IN
P.B. NO. 64 PAGE 46 OF 47

FB M16/53-54

SUBDIVISION PLAT
HOLLY RIDGE SUBDIVISION
OWNER/DEVELOPER:
ASSOCIATED DEVELOPERS INCORPORATED
JAMESTOWN DISTRICT, JAMES CITY COUNTY, VIRGINIA

DATE OCT. 13, 1995 DESIGNED TCS DRAWN MHC/LBA SCALE 1"=100'