

GREENWAY CURVE DATA

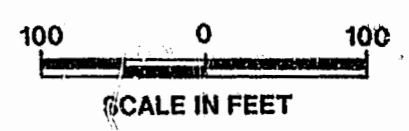
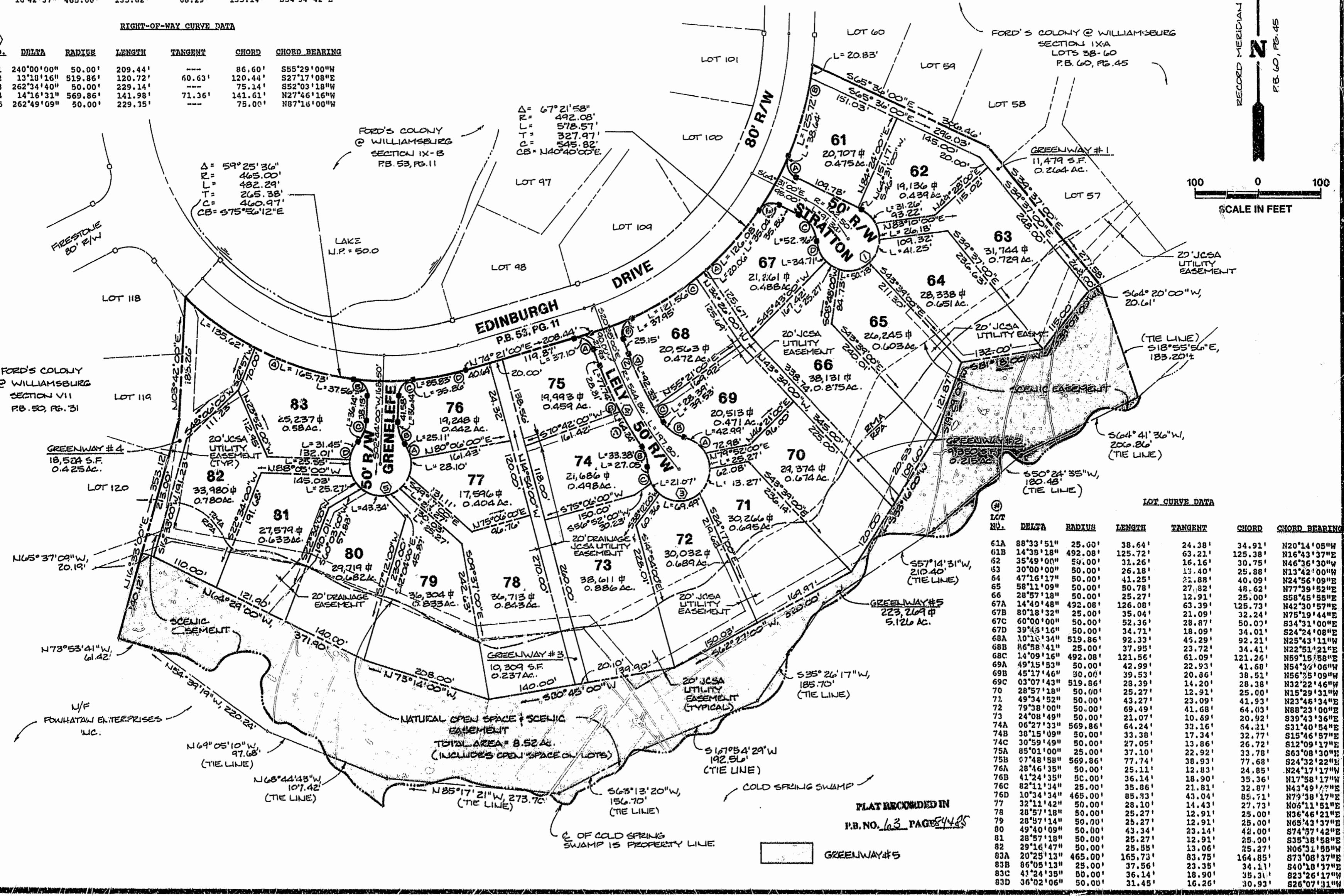
GREENWAY NO.	DELTA	RADIUS	LENGTH	TANGENT	CHORD	CHORD BEARING
1	02°25'31"	492.08'	20.83'	17.42'	20.83'	N08°11'47"E
2	02°20'10"	492.08'	20.06'	10.03'	20.06'	N51°01'21"E
4	16°42'37"	465.00'	135.62'	68.29'	135.14'	S54°34'42"E

RIGHT-OF-WAY CURVE DATA

NO.	DELTA	RADIUS	LENGTH	TANGENT	CHORD	CHORD BEARING
1	240°00'00"	50.00'	209.44'	---	86.60'	S55°29'00"W
2	13°18'16"	519.86'	120.72'	60.63'	120.44'	S27°17'08"E
3	262°34'40"	50.00'	229.14'	---	75.14'	S52°03'18"W
4	14°16'31"	569.86'	141.98'	71.36'	141.61'	N27°46'16"W
5	262°49'09"	50.00'	229.35'	---	75.00'	N87°16'00"W

Δ = 67°21'58"
R = 492.08'
L = 578.57'
T = 327.97'
C = 545.82'
CB = N40°40'00"E

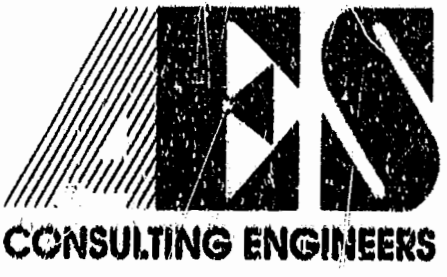
Δ = 59°25'36"
R = 465.00'
L = 482.29'
T = 265.38'
C = 460.97'
CB = S75°56'12"E



LOT CURVE DATA

LOT NO.	DELTA	RADIUS	LENGTH	TANGENT	CHORD	CHORD BEARING
61A	88°33'51"	25.00'	38.64'	24.38'	34.91'	N20°14'05"W
61B	14°35'18"	492.08'	125.72'	63.21'	125.38'	N16°43'37"E
62	35°49'00"	50.00'	31.26'	16.16'	30.75'	N46°36'30"W
63	30°00'00"	50.00'	26.18'	13.40'	25.88'	N13°42'00"W
64	47°16'17"	50.00'	41.25'	22.88'	40.09'	N24°56'09"E
65	58°11'09"	50.00'	50.78'	27.82'	48.62'	N77°39'52"E
66	28°57'18"	50.00'	25.27'	12.91'	25.00'	S58°45'55"E
67A	14°40'48"	492.08'	126.08'	63.39'	125.73'	N42°30'57"E
67B	80°18'32"	25.00'	35.04'	21.09'	32.24'	N75°19'44"E
67C	60°00'00"	50.00'	52.36'	28.87'	50.00'	S34°31'00"E
67D	39°46'16"	50.00'	34.71'	18.09'	34.01'	S24°24'08"E
68A	10°11'34"	519.86'	92.33'	45.29'	92.21'	N25°43'11"W
68B	16°58'43"	25.00'	37.95'	23.72'	34.41'	N22°51'21"E
68C	14°09'16"	492.08'	121.56'	61.09'	121.26'	N59°15'58"E
69A	49°15'53"	50.00'	42.99'	22.93'	41.68'	N54°33'06"W
69B	45°17'46"	50.00'	39.53'	20.86'	38.51'	N56°35'09"W
69C	03°07'43"	519.86'	28.39'	14.20'	28.38'	N32°22'46"W
70	28°57'18"	50.00'	25.27'	12.91'	25.00'	N15°29'31"W
71	49°34'52"	50.00'	43.27'	23.09'	41.93'	N23°46'34"E
72	79°38'00"	50.00'	69.49'	41.68'	64.03'	N88°23'00"E
73	24°08'49"	50.00'	21.07'	10.69'	20.92'	N54°43'36"E
74A	06°27'33"	569.86'	64.24'	32.16'	64.21'	S31°40'54"E
74B	38°15'09"	50.00'	33.38'	17.34'	32.77'	S53°46'57"E
74C	30°59'49"	50.00'	27.05'	13.86'	26.72'	S12°09'17"E
75A	85°01'00"	25.00'	37.10'	22.92'	33.78'	S63°08'30"E
75B	07°48'58"	569.86'	77.74'	38.93'	77.68'	S24°32'22"E
76A	28°46'35"	50.00'	25.11'	12.83'	24.85'	N24°17'17"W
76B	41°24'35"	50.00'	36.14'	18.90'	35.36'	N17°58'17"W
76C	82°11'34"	25.00'	35.86'	21.81'	32.87'	N43°49'22"E
76D	10°34'34"	465.00'	85.93'	43.04'	85.71'	N79°38'17"E
77	32°11'42"	50.00'	28.10'	14.43'	27.73'	N06°11'51"E
78	28°57'18"	50.00'	25.27'	12.91'	25.00'	N36°46'21"E
79	28°57'14"	50.00'	25.27'	12.91'	25.00'	N65°43'37"E
80	49°40'09"	50.00'	43.34'	23.14'	42.00'	S74°57'42"E
81	28°57'18"	50.00'	25.27'	12.91'	25.00'	S35°38'58"E
82	29°16'47"	50.00'	25.55'	13.06'	25.27'	N06°31'55"W
83A	20°25'13"	465.00'	165.73'	83.75'	164.85'	S73°08'37"E
83B	86°05'13"	25.00'	37.56'	23.35'	34.11'	S40°18'37"E
83C	41°24'35"	50.00'	36.14'	18.90'	35.31'	S23°26'17"W
83D	36°02'06"	50.00'	31.45'	16.26'	30.93'	S26°07'32"W

PLAT RECORDED IN
P.B. NO. 63 PAGE 44 & 45



5248 Old Towne Road, Suite 1
Williamsburg, Virginia 23188
(804) 253-0040
Fax (804) 220-8994

PLAT OF
FORD'S COLONY @ WILLIAMSBURG
SECTION IX-A
LOTS 61-83
JAMES CITY COUNTY, VIRGINIA



11:01 AM	Recorded 15 days	Project No. 5652
REVISION / COMMENT / NOTE		
No.	DATE	BY

Designed CMA	Drawn RMJ
Scale 1"=100'	Date 1/18/96
Project No. 5652	
Drawing No. 2 of 2	