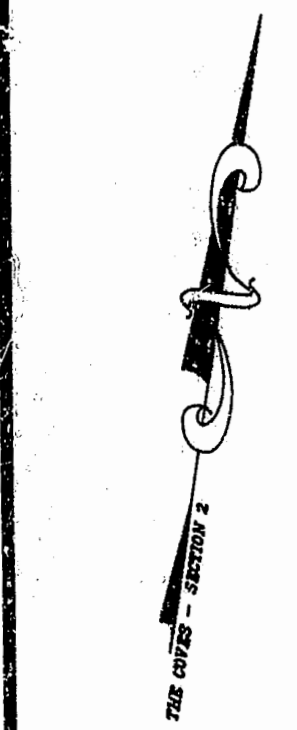
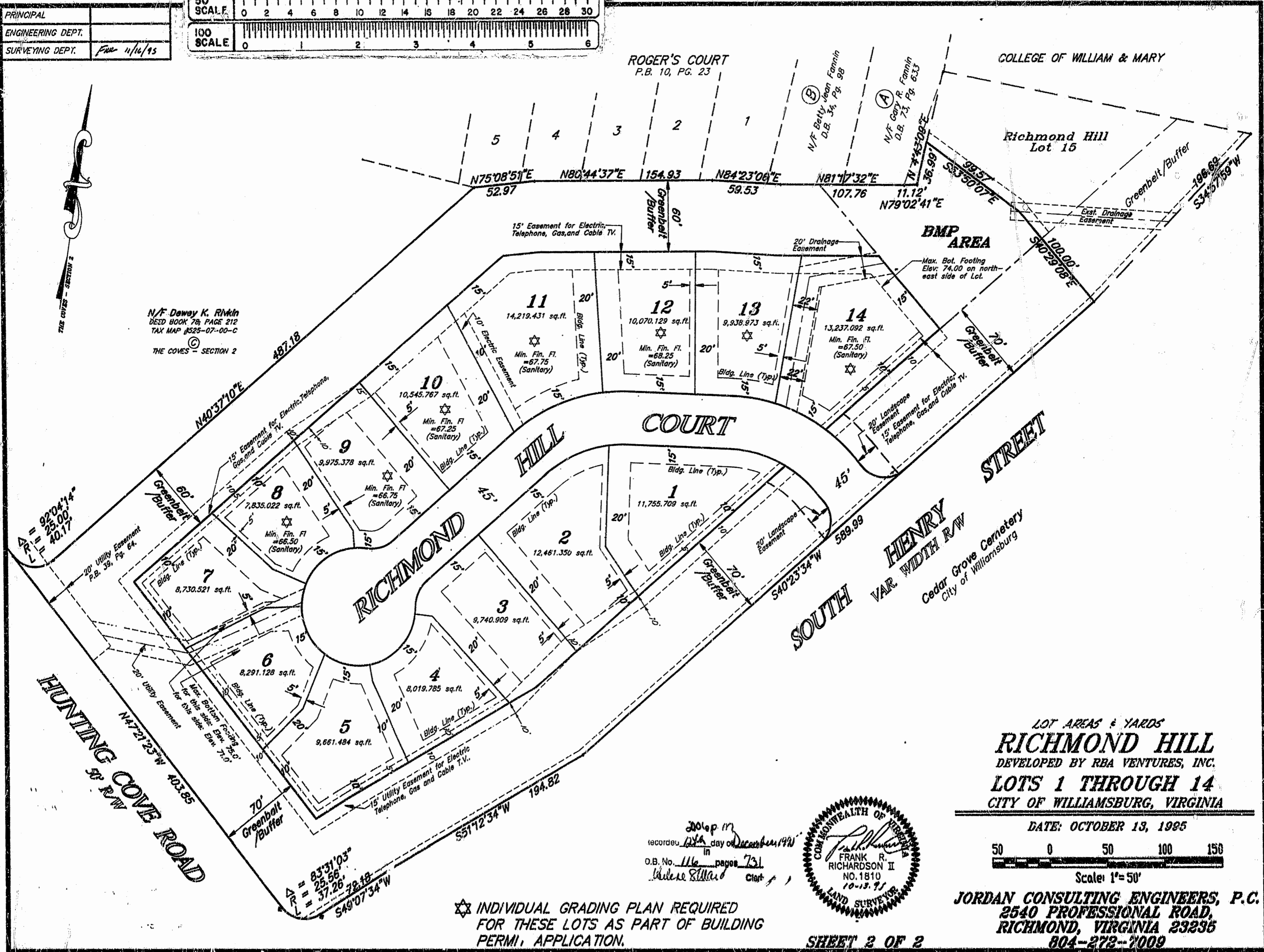


PRINCIPAL	
ENGINEERING DEPT.	
SURVEYING DEPT.	FILE 11/16/95

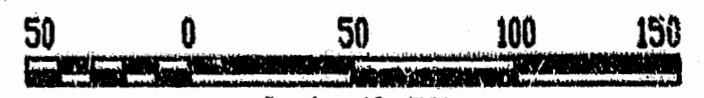


N/F Deway K. Rivkin
DESD BOOK 78, PAGE 212
TAX MAP 1525-07-00-C
THE COVES - SECTION 2



LOT AREAS & YARDS
RICHMOND HILL
DEVELOPED BY RBA VENTURES, INC.
LOTS 1 THROUGH 14
CITY OF WILLIAMSBURG, VIRGINIA

DATE: OCTOBER 13, 1995



Scale: 1"=50'

JORDAN CONSULTING ENGINEERS, P.C.
2540 PROFESSIONAL ROAD,
RICHMOND, VIRGINIA 23236
804-272-7009



recorded 12th day of December 1995
in
O.B. No. 116 pages 731
Wylene S. Miller Clerk

★ INDIVIDUAL GRADING PLAN REQUIRED
FOR THESE LOTS AS PART OF BUILDING
PERMIT APPLICATION.

SHEET 2 OF 2