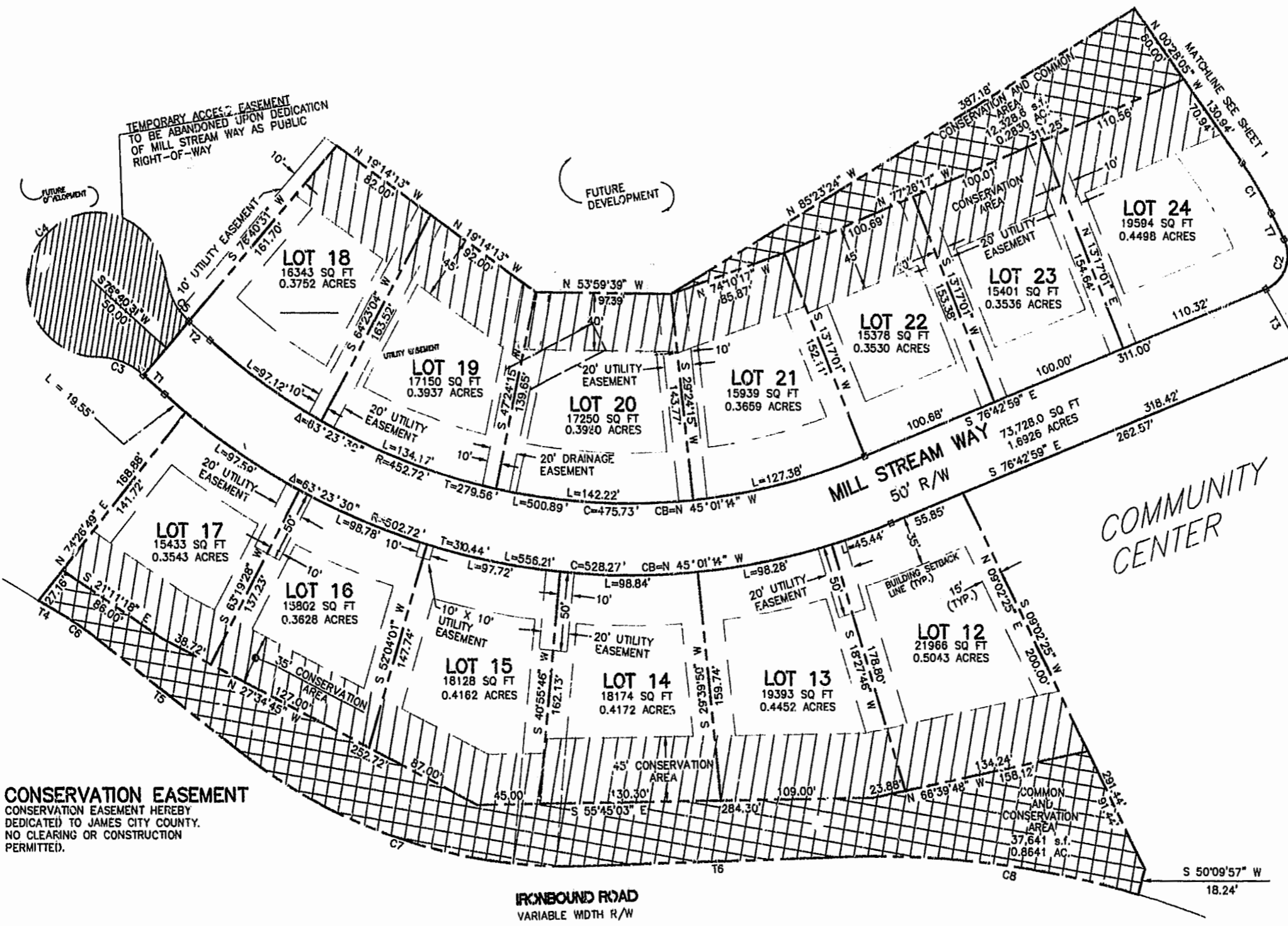
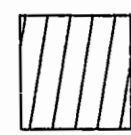


TEMPORARY ACCESS EASEMENT
TO BE ABANDONED UPON DEDICATION
OF MILL STREAM WAY AS PUBLIC
RIGHT-OF-WAY



COMMUNITY
CENTER

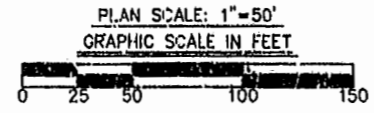
PLAT RECORDED IN
P.B. NO. 63 PAGE 59, 60
2:38 p.m.
Recorded 15 day of November 1995
D.B. No. 763 pages 59
Debra S. McDonald

 **CONSERVATION EASEMENT**
CONSERVATION EASEMENT HEREBY
DEDICATED TO JAMES CITY COUNTY.
NO CLEARING OR CONSTRUCTION
PERMITTED.

PLAT OF
SETTLERS MILL
AT JAMESTOWN
SECTION 4
FOR
SETTLERS MILL, INC.
JAMESTOWN DISTRICT
JAMES CITY COUNTY, VIRGINIA
8/22/95 SCALE: 1"=50'
SHEET 2 OF 3



Langley and McDonald, P.C.
Engineers - Surveyors - Planners
Landscape Architects - Environmental Consultants
VIRGINIA BEACH WILLIAMSBURG



LINE	DIRECTION	DISTANCE
T1	N 13°19'29" W	20.05'
T2	N 13°19'29" W	20.05'
T3	S 04°50'29" W	50.55'
T4	N 24°21'52" W	21.12'
T5	N 17°12'41" W	130.07'
T6	S 56°42'27" E	187.30'
T7	S 09°02'33" W	20.22'

SHEET	CURVE	RADIUS	LENGTH	TANGENT	CHORD	BEARING	DELTA
SHEET 2	C1	245.00'	40.66'	20.38'	40.61'	N 04°17'14" E	09°30'29"
SHEET 2	C2	25.00'	41.12'	26.92'	36.64'	N 56°09'47" E	94°14'28"
SHEET 2	C3	50.00'	38.14'	18.90'	35.36'	N 34°01'48" W	41°24'35"
SHEET 2	C4	50.00'	229.35'	56.69'	75.00'	S 76°40'31" W	262°49'09"
SHEET 2	C5	50.00'	38.14'	18.90'	35.36'	S 07°22'48" W	41°24'34"
SHEET 2	C6	215.00'	26.84'	13.44'	26.82'	N 20°47'15" W	07°09'07"
SHEET 2	C7	385.00'	265.39'	138.21'	280.17'	S 36°57'34" E	39°29'46"
SHEET 2	C8	675.00'	212.27'	107.02'	211.39'	N 47°41'56" W	16°01'04"

C:\SETTLERS\152 Wed Aug 30 14:14:55 1995

