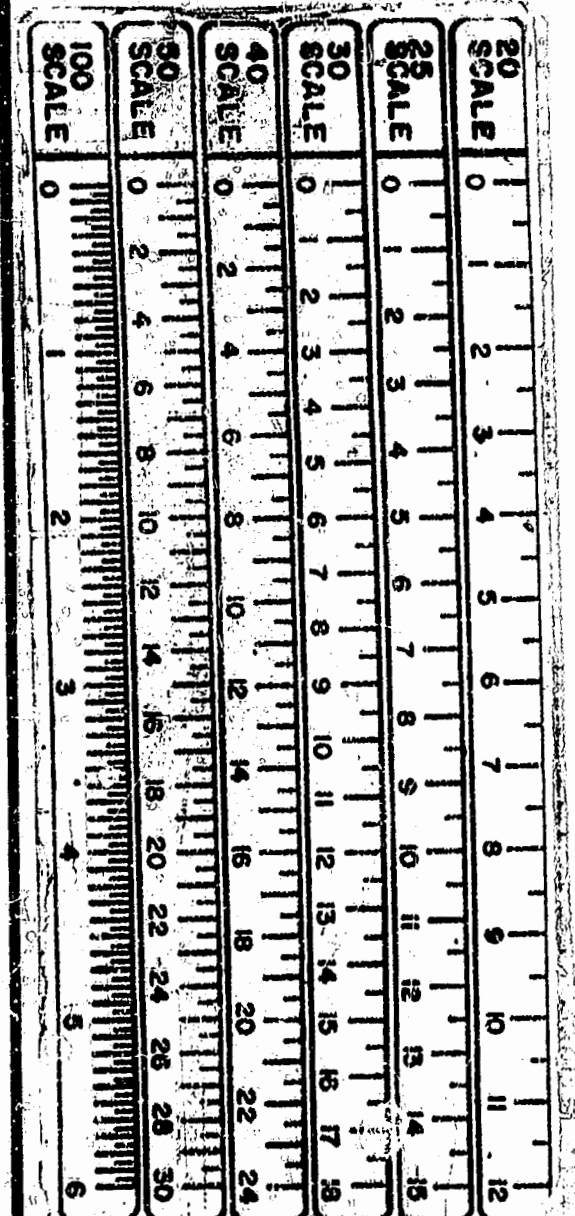
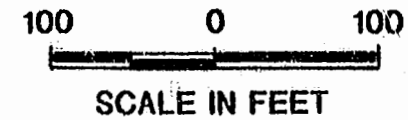
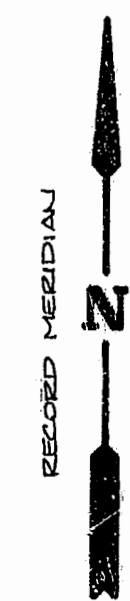


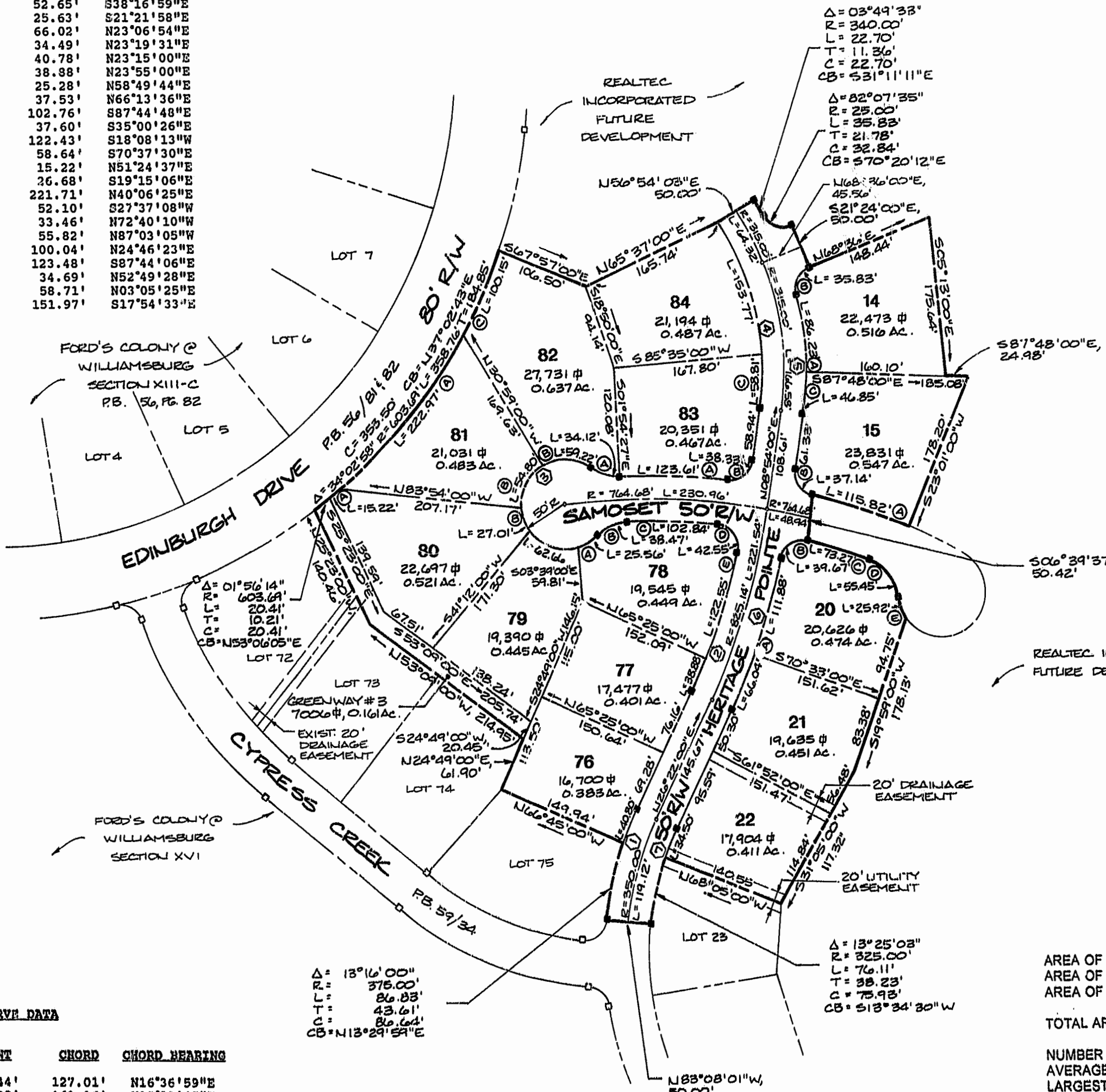
LOT CURVE DATA

LOT NO.	DELTA	RADIUS	LENGTH	TANGENT	CHORD	CHORD BEARING
14A	14°31'51"	340.00'	86.23'	43.35'	86.00'	N06°15'40"W
14B	22°07'35"	25.00'	35.83'	21.78'	32.84'	N27°32'12"E
15A	08°24'11"	789.68'	115.82'	58.01'	115.71'	N72°00'36"W
15B	85°06'41"	25.00'	37.14'	22.95'	33.82'	N33°39'21"W
15C	07°53'44"	340.00'	46.85'	23.46'	46.82'	N04°57'08"E
20A	07°32'24"	850.14'	111.88'	56.02'	111.80'	N17°07'10"E
20B	90°55'25"	25.00'	39.67'	25.41'	35.64'	N88°48'41"E
20C	05°40'31"	739.68'	73.27'	36.66'	73.24'	S72°53'21"E
20D	63°32'12"	50.00'	55.45'	30.96'	52.65'	S38°16'59"E
20E	29°42'09"	50.00'	25.92'	13.26'	25.63'	S21°21'58"E
21	74°27'03"	850.14'	66.04'	33.04'	66.02'	N23°06'54"E
22	06°04'59"	325.00'	34.50'	17.27'	34.49'	N23°19'31"E
76	06°14'01"	375.00'	40.80'	20.42'	40.78'	N23°15'00"E
77	02°47'03"	800.14'	38.88'	19.44'	38.88'	N23°55'00"E
78A	29°17'29"	50.00'	25.56'	13.07'	25.28'	N58°49'44"E
78B	44°05'14"	50.00'	38.47'	20.25'	36.02'	N66°13'36"E
78C	07°57'57"	739.68'	102.84'	51.50'	102.76'	S87°44'48"E
78D	97°30'46"	25.00'	42.55'	28.51'	37.60'	S35°00'26"E
78E	08°46'32"	800.14'	122.55'	61.39'	122.43'	S18°08'13"W
79	71°48'03"	50.00'	62.66'	36.19'	58.64'	S70°37'30"E
80A	01°26'41"	603.69'	15.22'	7.61'	15.22'	N51°24'37"E
80B	30°56'44"	50.00'	27.01'	13.84'	26.68'	S19°15'06"E
81A	21°09'44"	603.69'	222.97'	112.77'	221.71'	N40°06'25"E
81B	62°47'44"	50.00'	51.80'	30.52'	52.10'	S27°37'08"W
82A	39°05'58"	50.00'	34.12'	17.75'	33.46'	N72°40'10"W
82B	67°51'49"	50.00'	33.64'	17.75'	33.64'	N87°03'05"W
82C	09°30'19"	603.69'	100.15'	50.19'	100.04'	N24°46'23"E
83A	08°58'06"	789.68'	123.61'	61.93'	123.48'	S87°44'06"E
83B	87°50'57"	25.00'	24.08'	15.22'	34.69'	N52°49'28"E
83C	11°37'10"	290.00'	58.81'	29.51'	58.71'	N03°05'25"E
84	30°22'48"	290.00'	153.77'	78.74'	151.97'	S17°54'33"E



RIGHT-OF-WAY CURVE DATA

#	NO.	DELTA	RADIUS	LENGTH	TANGENT	CHORD	CHORD BEARING
1	1	19°30'01"	375.00'	127.63'	64.44'	127.01'	N16°36'59"E
2	2	11°33'35"	890.14'	161.43'	80.99'	161.16'	N19°31'45"E
3	3	262°41'50"	50.00'	229.25'	---	75.07'	N04°28'06"W
4	4	41°59'57"	290.00'	212.58'	111.32'	207.85'	N12°05'59"W
5	5	22°25'35"	340.00'	133.08'	67.40'	132.23'	S02°18'48"E
6	6	11°59'27"	850.14'	177.92'	89.29'	177.59'	S19°20'42"W
7	7	19°30'01"	325.00'	110.61'	55.85'	110.08'	S16°36'59"W

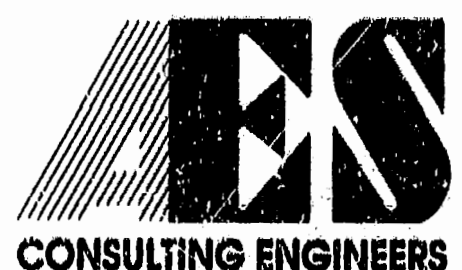


PLAT RECORDED IN
P.B. NO. 63 PAGE 9:10

2:54 p.m.
Recorded 8th day of November 1995
D.B. No. 762 in pages 375
Glen S. Miller Clerk

AREA TABULATION
LOTS 14 AND 15, 20-22, AND 76-84

AREA OF RESIDENTIAL LOTS	290,585 S.F.	6.871 AC.
AREA OF PRIVATE RIGHT-OF-WAY	60,213 S.F.	1.382 AC.
AREA OF GREENWAYS	7,006 S.F.	0.161 AC.
TOTAL AREA SUBDIVIDED	357,804 S.F.	8.214 AC.
NUMBER OF LOTS	14	
AVERAGE LOT SIZE	20,766 S.F.	0.477 AC.
LARGEST LOT (LOT #82)	27,731 S.F.	0.837 AC.
SMALLEST LOT (LOT #76)	16,700 S.F.	0.383 AC.
GROSS LOTS/ACRE		1.70 LOT/ACRE



5248 Olde Towne Road, Suite 1
Williamsburg, Virginia 23188
(804) 253-0040
Fax (804) 220-8994

**PLAT OF
FORD'S COLONY
@ WILLIAMSBURG**
SECTION XVI
LOTS 14 & 15, 20-22 & 76-84
BERKELEY DISTRICT JAMES CITY COUNTY VIRGINIA



No.	DATE	REVISION / COMMENT / NOTE	BY

Designed VMB	Drawn RMJ
Scale 1" = 100'	Date SEPT. 5, 95
Project No. 5652	
Drawing No. 2 OF 2	