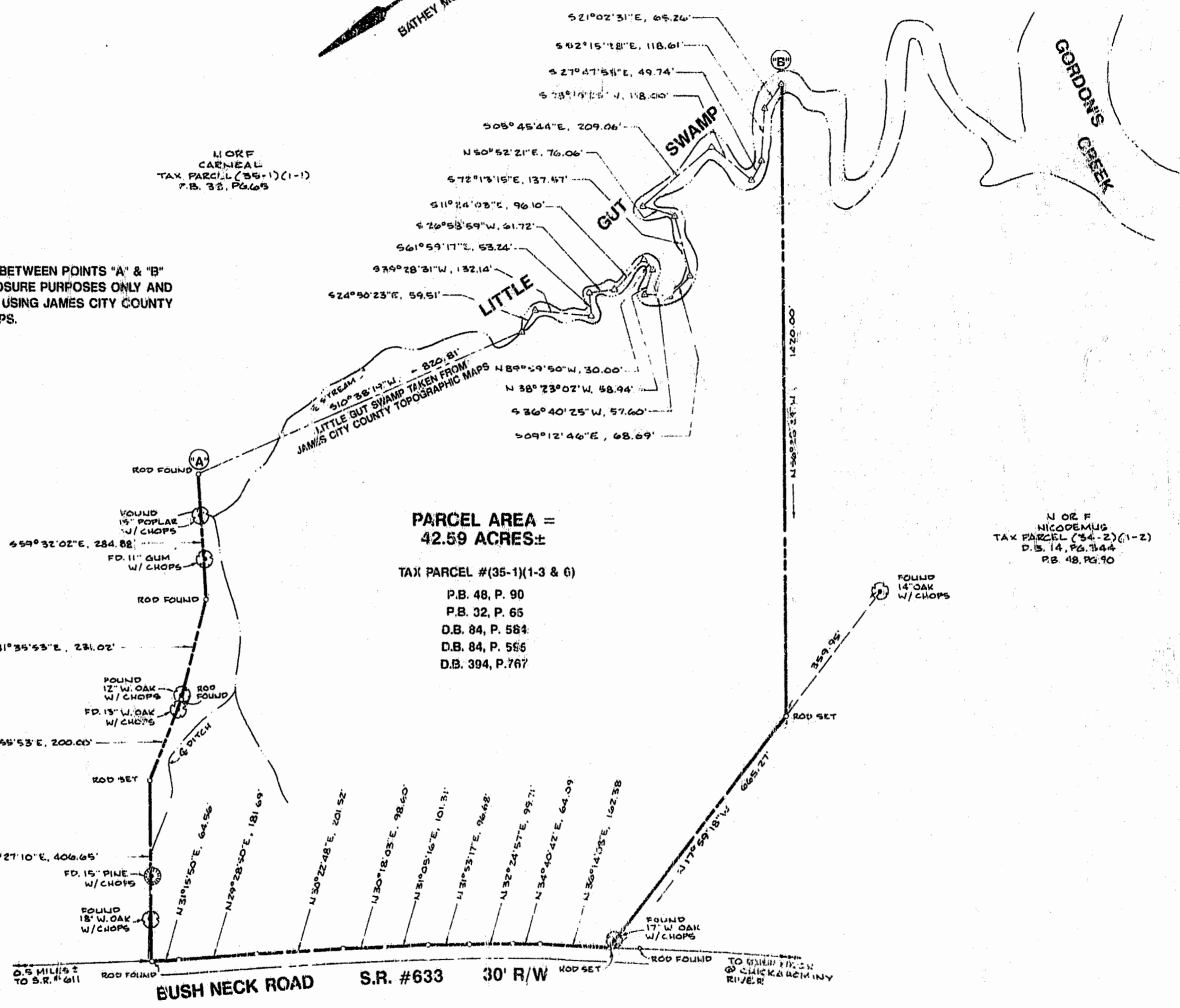


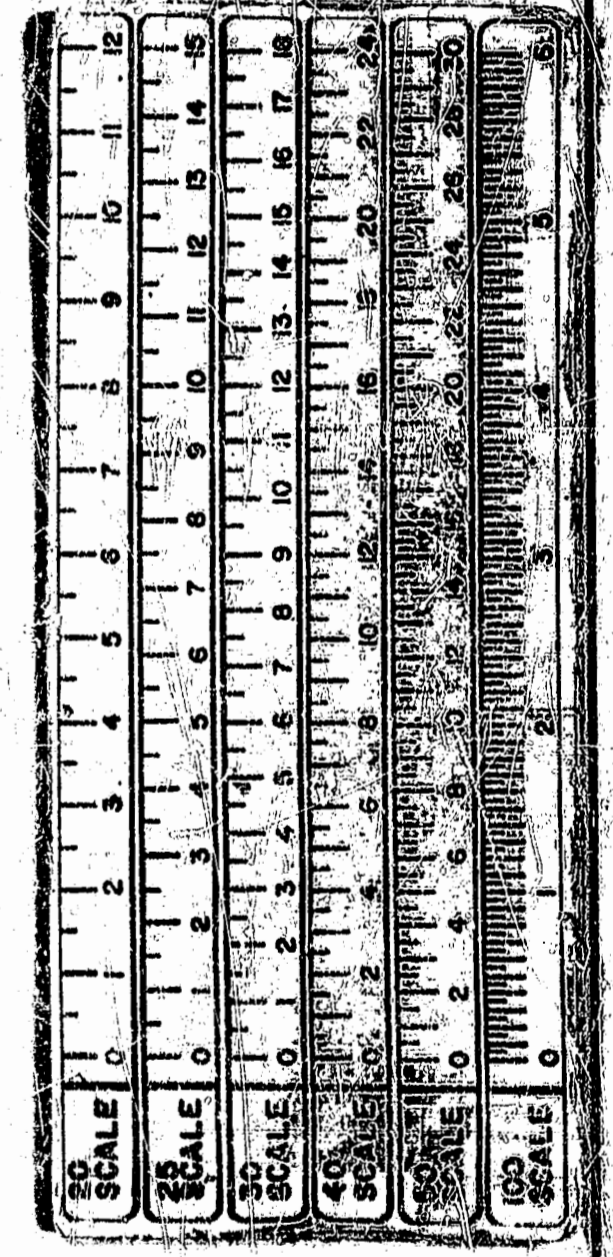
NOTE: LINES AS SHOWN BETWEEN POINTS "A" & "B" ARE FOR PLAT CLOSURE PURPOSES ONLY AND WAS ESTABLISHED USING JAMES CITY COUNTY TOPOGRAPHIC MAPS.



PARCEL AREA = 42.59 ACRES±  
TAX PARCEL #(35-1)(1-3 & 6)  
P.B. 48, P. 90  
P.B. 32, P. 65  
D.B. 84, P. 584  
D.B. 84, P. 566  
D.B. 394, P. 767

N OR F NICODEMUS TAX PARCEL (34-2)(1-2)  
D.B. 14, P. 344  
P.B. 48, P. 90

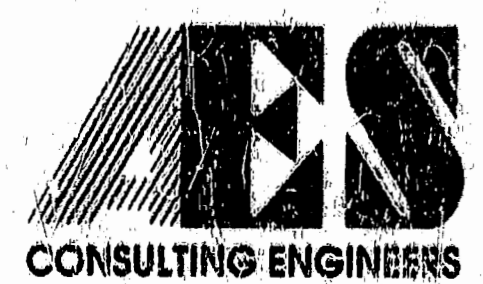
N OR F CARNEAL TAX PARCEL (35-1)(1-1)  
P.B. 32, P. 65



PLAT NO. 63

NOTE: TAKEN FROM A PLAT PREPARED BY AES DATED 7/13/93.

10:52 Am  
Recorded 1 day of JAN 1993  
D.B. No. 761  
Plane Survey Clerk



5248 Olde Towne Road, Suite 1  
Williamsburg, Virginia 23188  
(804) 253-0040  
Fax (804) 220-8994

PLAT SHOWING  
A PARCEL CONTAINING 42.59 ACRES±  
OWNED BY: NAYSES BAY LAND CO., L.L.C.  
POWHATAN DISTRICT JAMES CITY COUNTY VIRGINIA



No.	DATE	REVISION / COMMENT / NOTE	BY
1	10/24/93	REVISED TITLE & OWNERS NAME	CMA

Designed AES	Drawn CMA
Scale 1" = 200'	Date 10/24/93
Project No. 5160	
Drawing No. 1 OF 1	