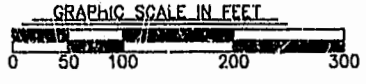
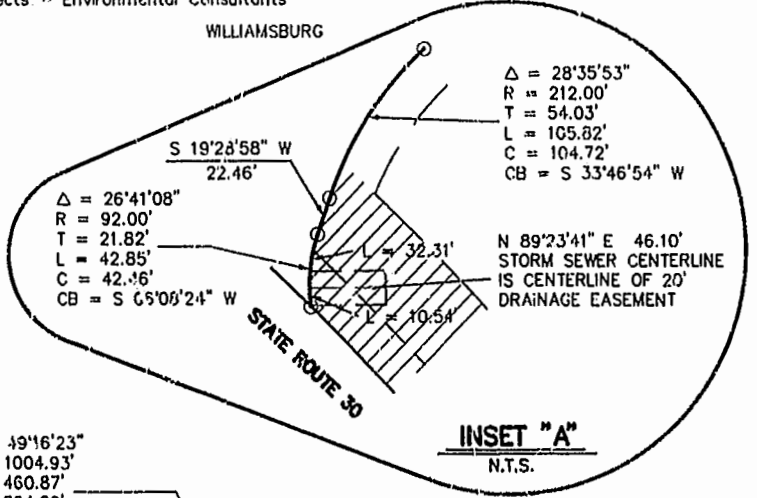


PLAT OF SECTION A OF STONEHOUSE COMMERCE PARK AT STONEHOUSE FOR STONEHOUSE, I.N.C. STONEHOUSE DISTRICT JAMES CITY COUNTY, VIRGINIA SCALE: 1"=100' 10/10/95 SHEET 2 OF 3



Langley and McDonald, P.C.

Engineers - Surveyors - Planners Landscape Architects - Environmental Consultants VIRGINIA BEACH WILLIAMSBURG

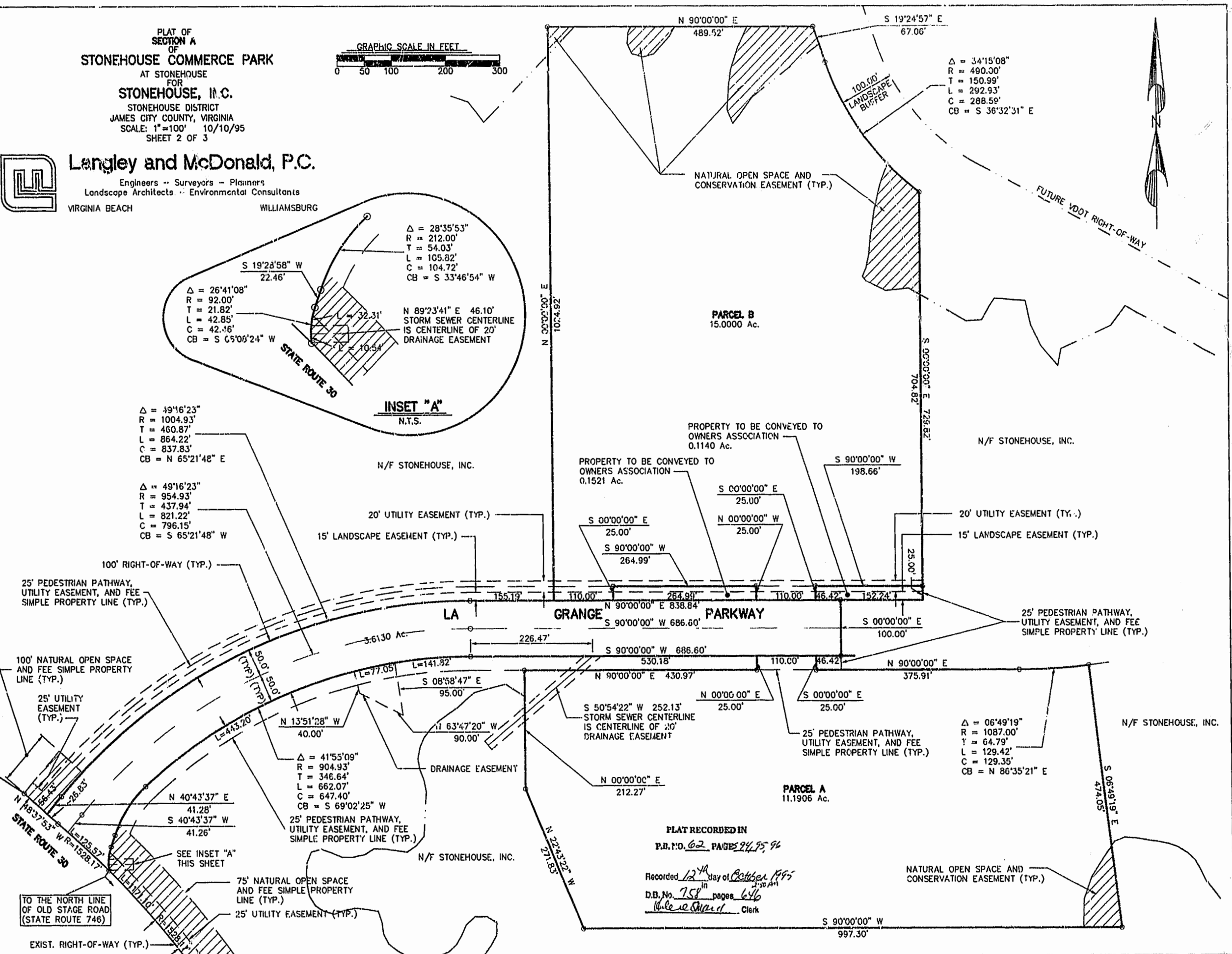


Δ = 34°15'08" R = 490.00' T = 150.99' L = 292.93' C = 288.59' CB = S 36°32'31" E

Δ = 49°16'23" R = 1004.93' T = 460.87' L = 864.22' C = 837.83' CB = N 65°21'48" E

Δ = 49°16'23" R = 954.93' T = 437.94' L = 821.22' C = 796.15' CB = S 65°21'48" W

Δ = 06°49'19" R = 1087.00' T = 64.79' L = 129.42' C = 129.35' CB = N 86°35'21" E



PLAT RECORDED IN P.B. NO. 62, PAGES 94, 95, 96

Recorded 12th day of October 1995 in 2:30 AM D.B. No. 758 pages 646

TO THE NORTH LINE OF OLD STAGE ROAD (STATE ROUTE 746)

EXIST. RIGHT-OF-WAY (TYP.)