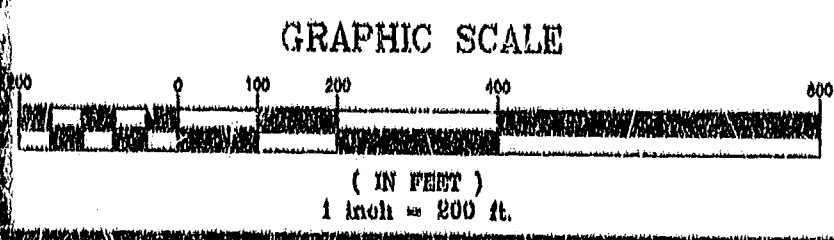
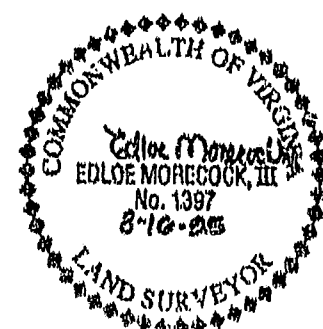
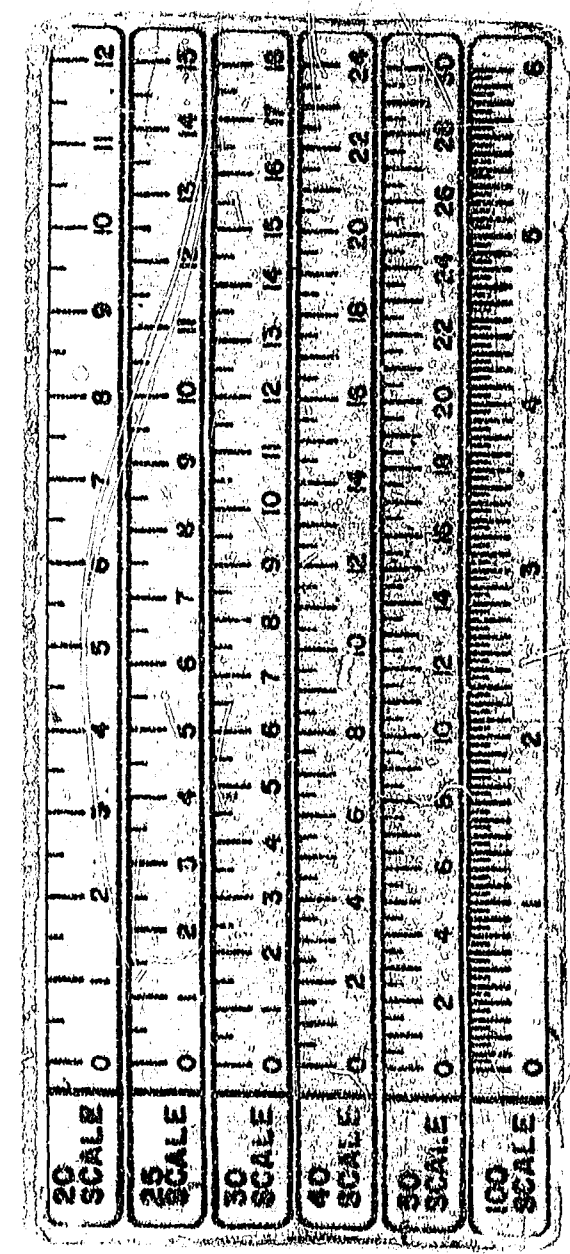
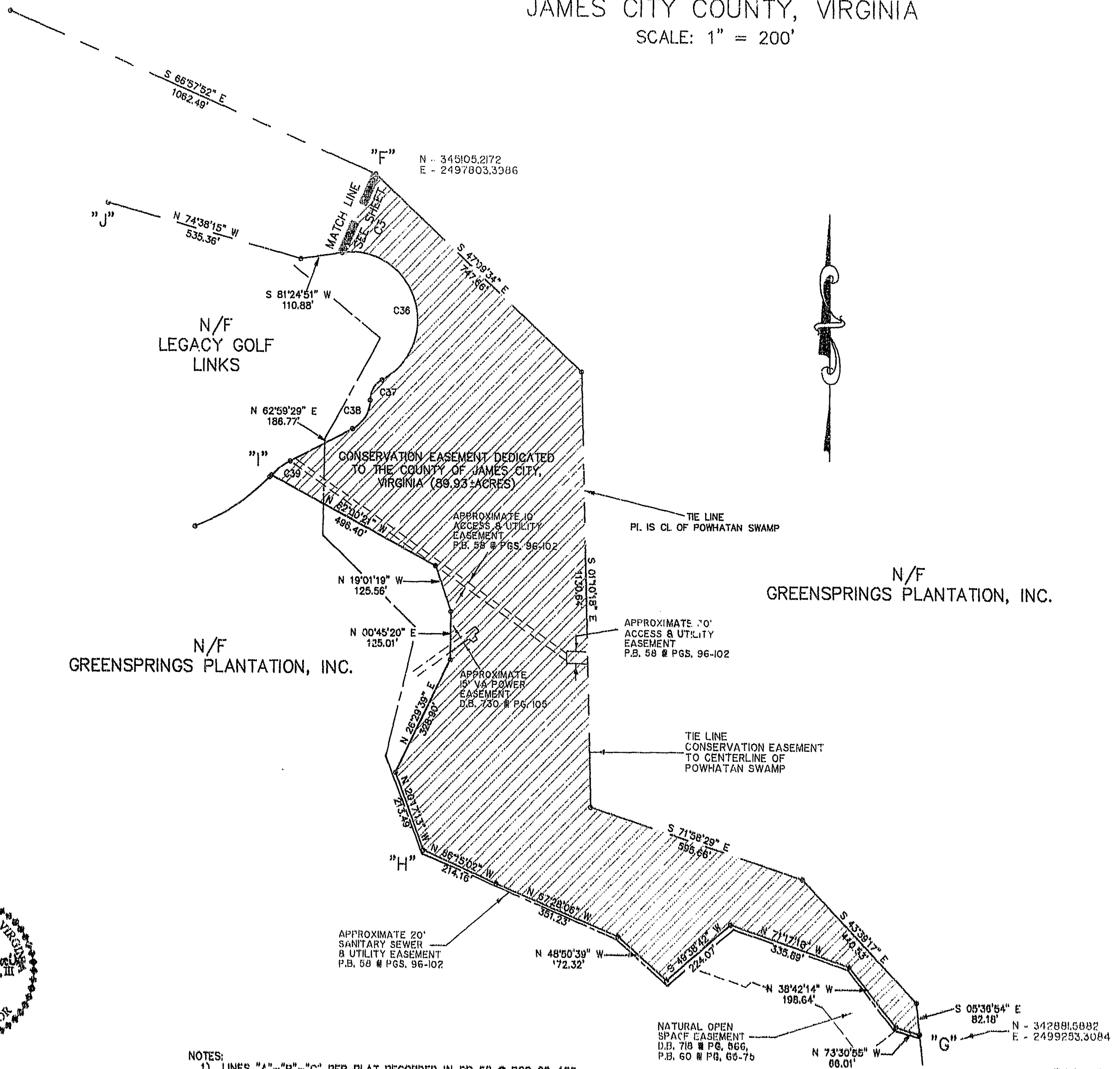


GREENSPRINGS PLANTATION CONSERVATION EASEMENT PLAT

JAMES CITY COUNTY, VIRGINIA
SCALE: 1" = 200'



- NOTES:
- 1) LINES "A"-"B"-"C" PER PLAT RECORDED IN PB 58 @ PGS 96-102.
 - 2) LINES "C"-"D"-"E" PER PLAT TITLED "GREENSPRINGS PLANTATION PHASE ONE BEING A SUBDIVISION OF PROPERTY OF GREENSPRINGS PLANTATION, INC. BY LANGLEY AND McDONALD, P.C. DATED 7/14/95.
 - 3) LINES "E"-"F"-"G" PER PLAT RECORDED IN PB 54 @ PGS 69-76.
 - 4) LINES "G"-"H"-"I" PER PLAT TITLED "SUBDIVISION OF PROPERTY OF GREENSPRINGS PLANTATION, INC." BY RICKMOND ENGINEERING, INC. DATED 6/1/95.
 - 5) LINES "I"-"J"-"K" PER PLAT RECORDED IN PB 58 @ PGS 96-102.
 - 6) LINES "A"-"L" PER PLAT TITLED "BOUNDARY LINE ADJUSTMENT LEGACY (GREENSPRINGS) LIMITED PARTNERSHIP BY LANGLEY AND McDONALD, P.C. DATED 12/19/94.

3:02 p.m.
Recorded 22nd day of September 1995
in 755 pages 784
D.B. No. 755
S. H. ... Clerk
Jay. Dawn R. Marks Dep. Clerk

Rickmond Engineering, Inc.
1643 Merrimac Trail
Williamsburg VA 23185
(804)229-1776 or 875-1785
Civil Engineering
Environmental Engineering
Land Surveying
Date: 2/21/95
Project No. 95119
Sheet No. C4