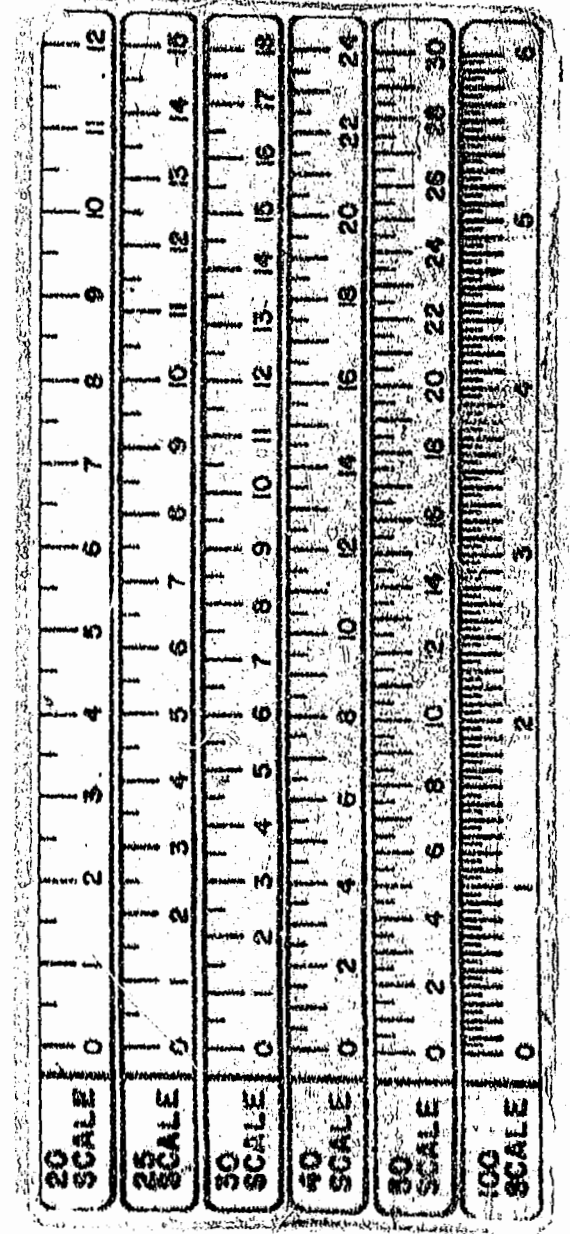
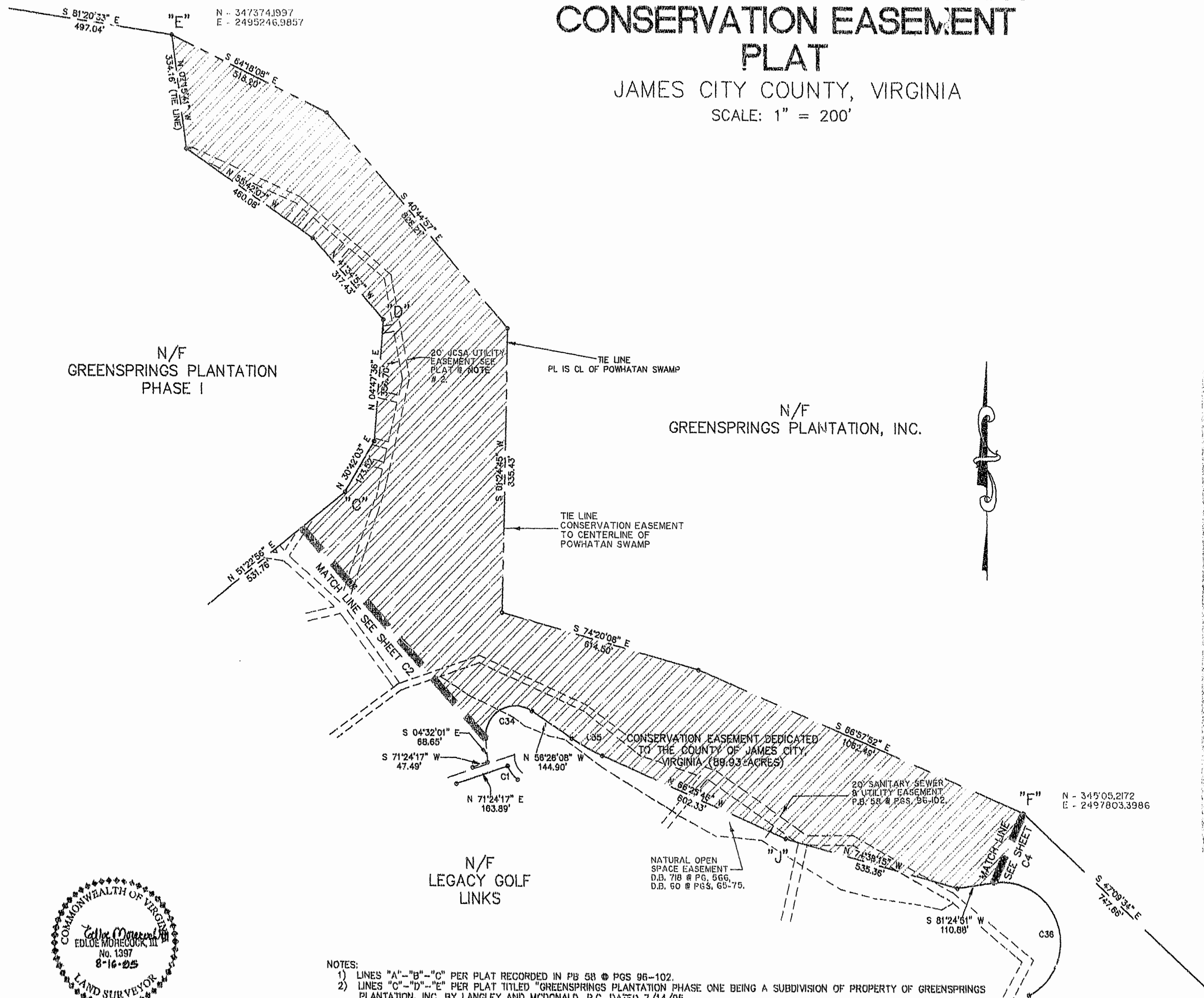
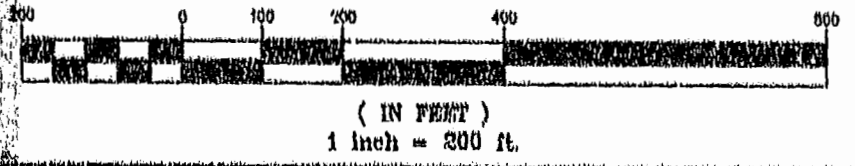


# GREENSPRINGS PLANTATION CONSERVATION EASEMENT PLAT

JAMES CITY COUNTY, VIRGINIA  
SCALE: 1" = 200'



GRAPHIC SCALE



- NOTES:
- 1) LINES "A"- "B"- "C" PER PLAT RECORDED IN PB 58 @ PGS 96-102.
  - 2) LINES "C"- "D"- "E" PER PLAT TITLED "GREENSPRINGS PLANTATION PHASE ONE BEING A SUBDIVISION OF PROPERTY OF GREENSPRINGS PLANTATION, INC. BY LANGLEY AND McDONALD, P.C. DATED 7/14/95.
  - 3) LINES "E"- "F"- "G" PER PLAT RECORDED IN PB 54 @ PGS 69-78.
  - 4) LINES "G"- "H"- "I" PER PLAT TITLED "SUBDIVISION OF PROPERTY OF GREENSPRINGS PLANTATION, INC." BY RICKMOND ENGINEERING, INC. DATED 6/1/95.
  - 5) LINES "I"- "J"- "K" PER PLAT RECORDED IN PB 58 @ PGS 96-102.
  - 6) LINES "A"- "L" PER PLAT TITLED "BOUNDARY LINE ADJUSTMENT LEGACY (GREENSPRINGS) LIMITED PARTNERSHIP BY LANGLEY AND McDONALD, P.C. DATED 12/19/94.

Recorded *20th* day of *September*, 1995  
 D.B. No. *255* pages *78*  
*Edloe Morecock III* Clerk  
*Richard M. ...* Deputy Clerk

**Rickmond Engineering, Inc.**  
 1643 Merrimac Trail  
 Williamsburg VA 23185  
 (804)229-1776 or 875-1785  
 Date: 2/21/95 Project No. 0510 Sheet No. 03

Civil Engineering  
 Environmental Engineering  
 Land Surveying