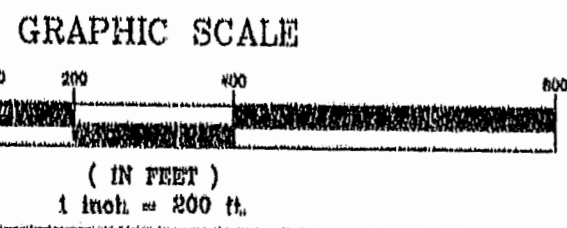
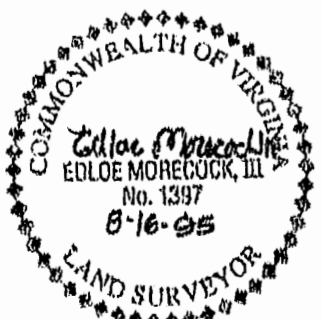
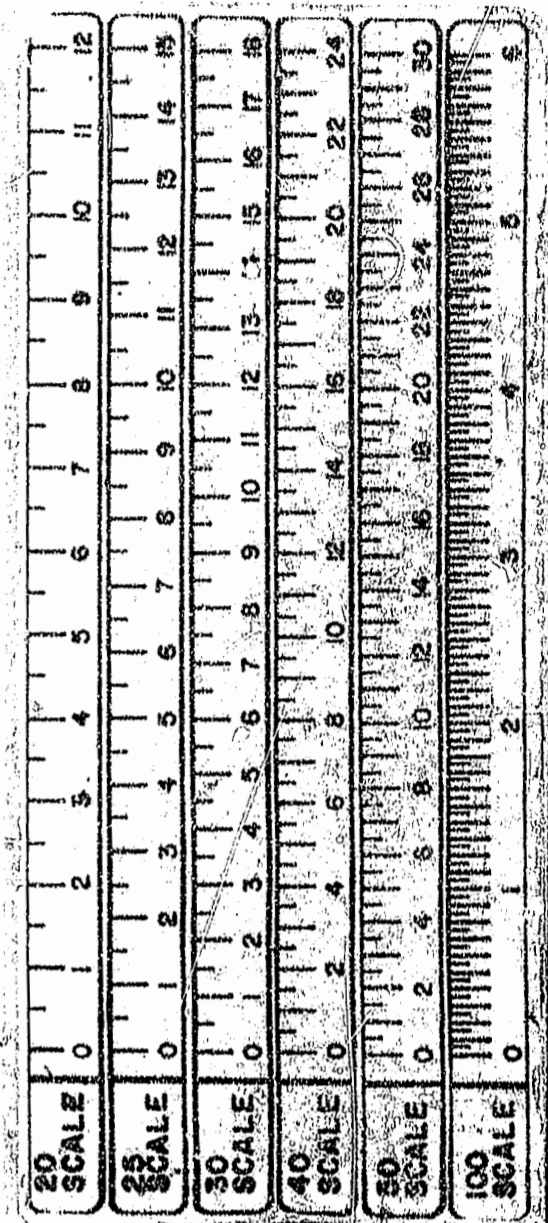
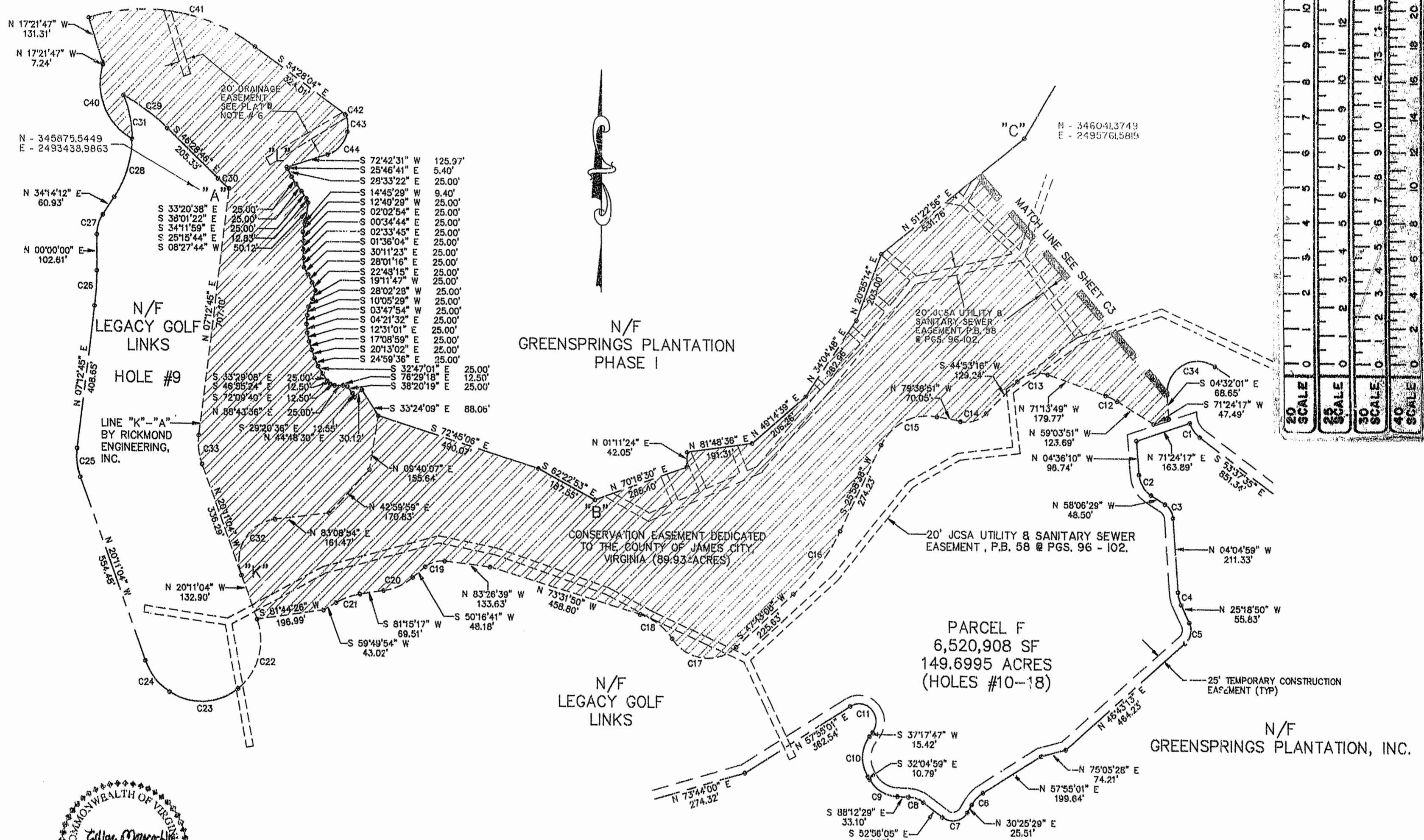


GREENSPRINGS PLANTATION CONSERVATION EASEMENT PLAT

JAMES CITY COUNTY, VIRGINIA

SCALE: 1" = 200'



- NOTES:
- 1) LINES "L"- "B"- "C" PER PLAT RECORDED IN PB 58 @ PGS 96-102.
 - 2) LINES "C"- "D"- "E" PER PLAT TITLED "GREENSPRINGS PLANTATION PHASE ONE BEING A SUBDIVISION OF PROPERTY OF GREENSPRINGS PLANTATION, INC. BY LANGLEY AND McDONALD, P.C. DATED 7/14/95.
 - 3) LINES "E"- "F"- "G" PER PLAT RECORDED IN PB 54 @ PGS 69-76.
 - 4) LINES "G"- "H"- "I" PER PLAT TITLED "SUBDIVISION OF PROPERTY OF GREENSPRINGS PLANTATION, INC." BY RICHMOND ENGINEERING, INC. DATED 6/1/95.
 - 5) LINES "I"- "J"- "K" PER PLAT RECORDED IN PB 58 @ PGS 96-102.
 - 6) LINES "A"- "L" PER PLAT TITLED "BOUNDARY LINE ADJUSTMENT LEGACY (GREENSPRINGS) LIMITED PARTNERSHIP BY LANGLEY AND McDONALD, P.C. DATED 12/19/94.

Recorded *3/20/99* in *Day of September, 1998*
 in
 D.B. No. *75* page *704*
Sydney S. Walker Clerk
Lisa Ann O'Neil Clerk

Rickmond Engineering, Inc.
 1643 Merrimac Trail
 Williamsburg VA 23185
 (804)229-1776 or 875-1785
 Date: 2/21/05 Project No. 95118 Sheet No. C2

Civil Engineering
 Environmental Engineering
 Land Surveying