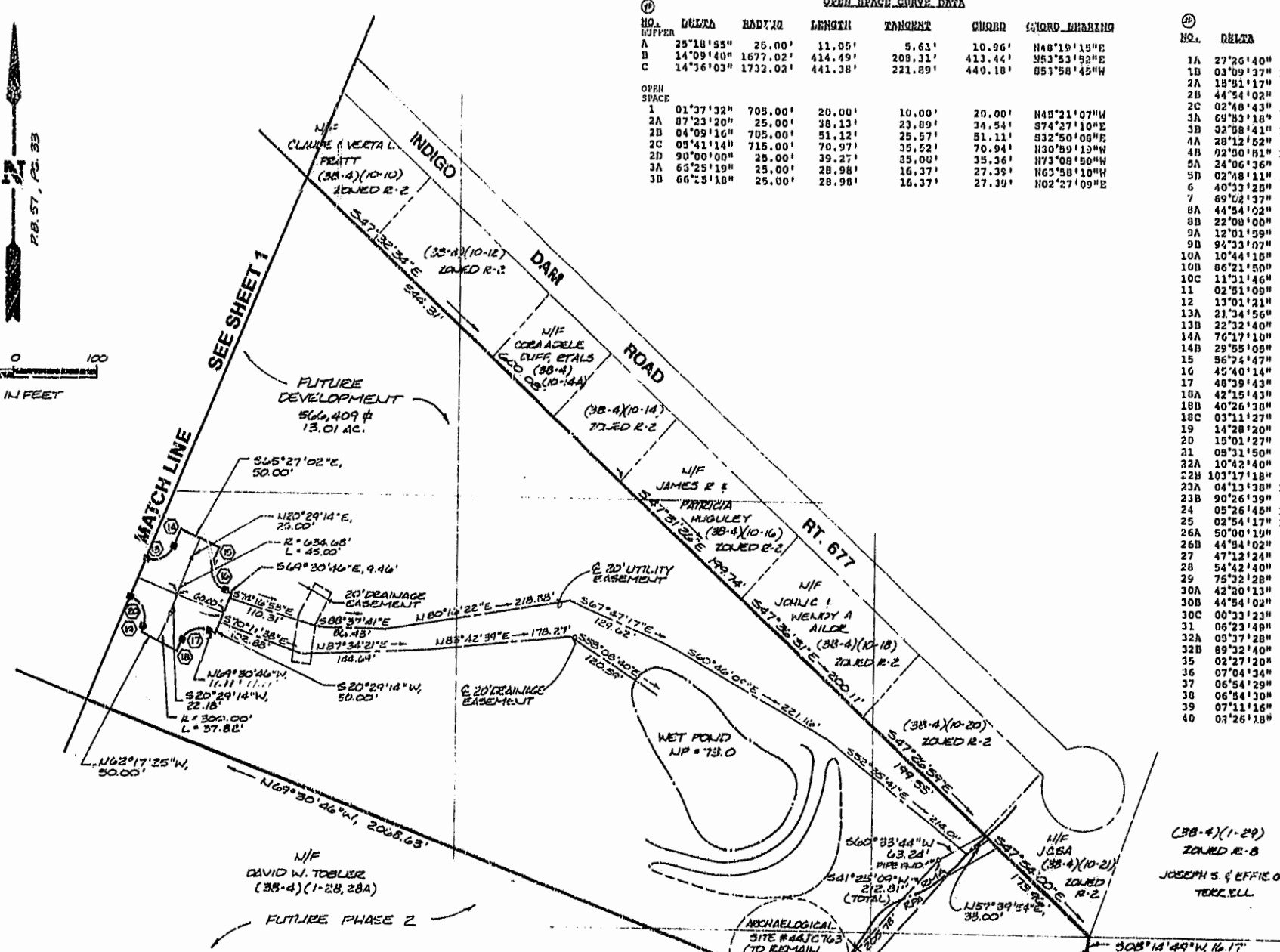
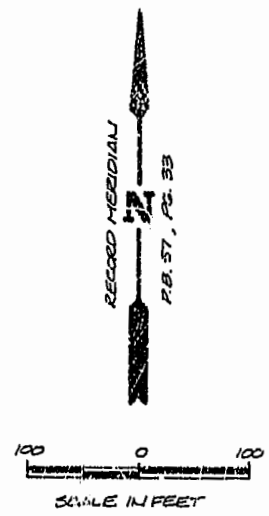


OPEN SPACE CURVE DATA

NO.	DELTA	RADIUS	LENGTH	TANGENT	CHORD	CHORD BEARING
A	25°18'55"	25.00'	11.05'	5.63'	10.96'	N48°19'15"W
B	14°09'14"	1677.02'	414.49'	208.11'	413.44'	S53°53'15"E
C	14°16'03"	1733.02'	441.38'	221.89'	440.18'	S53°58'45"W

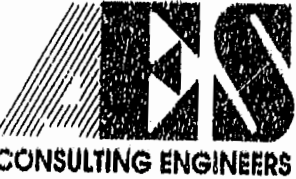
LOT CURVE DATA

NO.	DELTA	RADIUS	LENGTH	TANGENT	CHORD	CHORD BEARING
1A	27°26'40"	25.00'	11.97'	6.10'	11.86'	S69°05'51"W
1B	03°09'37"	1732.02'	95.23'	47.72'	90.52'	N59°41'28"E
2A	18°51'17"	60.00'	16.60'	8.35'	16.05'	S18°24'08"W
2B	44°54'02"	60.00'	47.02'	45.83'	82.75'	S32°55'30"W
2C	02°48'43"	1732.02'	85.00'	42.51'	84.99'	N56°41'48"E
3A	69°03'18"	63.00'	71.19'	41.93'	60.73'	S01°16'25"W
3B	28°08'41"	1732.02'	90.03'	45.02'	90.02'	N53°45'06"E
4A	38°12'52"	60.00'	29.85'	15.08'	29.85'	N69°40'00"W
4B	02°00'51"	1732.02'	86.08'	43.05'	86.07'	N50°54'18"E
5A	24°06'36"	60.00'	25.25'	12.81'	25.06'	S43°30'45"E
5B	02°48'11"	1732.02'	84.73'	42.37'	84.72'	S48°04'48"W
6	40°33'28"	60.00'	42.47'	22.17'	41.59'	S11°10'48"E
7	69°02'37"	60.00'	72.70'	41.27'	68.01'	N43°37'15"E
8A	44°54'02"	60.00'	47.02'	24.79'	45.83'	N77°45'32"E
8B	22°00'00"	60.00'	23.18'	11.74'	23.03'	N65°12'33"E
9A	12°01'59"	685.00'	137.86'	69.04'	137.31'	N45°11'36"W
9B	94°33'07"	25.00'	41.26'	27.07'	16.73'	S08°05'57"E
10A	10°44'18"	353.02'	66.16'	33.18'	66.06'	S25°15'58"W
10B	86°21'50"	25.00'	37.68'	23.46'	34.21'	S74°04'32"W
10C	11°31'46"	685.00'	131.80'	66.13'	131.58'	N45°11'36"W
11	02°51'09"	353.02'	71.58'	8.79'	71.57'	S43°03'37"W
12	13°01'21"	330.39'	75.14'	37.73'	74.98'	S37°58'31"W
13A	21°34'56"	60.00'	22.60'	11.44'	22.47'	S01°52'17"E
13B	22°32'40"	330.39'	130.08'	65.89'	129.24'	S20°11'31"W
14A	76°17'10"	60.00'	79.89'	47.12'	74.12'	S04°26'15"E
14B	29°55'09"	60.00'	31.73'	16.03'	30.98'	S27°37'49"E
15	56°24'47"	60.00'	59.08'	32.18'	56.72'	N51°54'44"E
16	45°04'14"	60.00'	47.83'	25.27'	46.57'	S67°02'46"E
17	48°39'43"	60.00'	50.86'	27.13'	49.44'	S19°52'40"E
18A	42°15'43"	60.00'	44.26'	23.19'	43.26'	S25°34'55"W
18B	40°26'38"	60.00'	42.35'	22.10'	41.48'	S28°29'06"W
18C	03°11'27"	380.59'	21.20'	10.20'	21.18'	S07°51'52"W
19	14°28'20"	380.59'	96.13'	48.32'	95.88'	S16°41'45"W
20	15°01'27"	380.59'	99.80'	51.19'	99.51'	S12°26'38"W
21	09°31'50"	385.59'	36.74'	18.38'	36.72'	S41°43'17"W
22A	10°42'40"	380.59'	56.65'	28.41'	56.57'	S30°07'52"W
22B	103°17'18"	25.00'	45.07'	31.59'	39.21'	S17°52'15"E
23A	04°13'38"	1035.03'	76.37'	38.20'	76.35'	N21°05'03"E
23B	90°26'39"	25.00'	39.46'	25.19'	35.49'	N65°16'07"E
24	05°26'45"	1035.03'	90.38'	49.23'	98.34'	N27°53'15"E
25	02°54'17"	1035.03'	52.47'	26.24'	52.46'	N32°03'46"E
26A	50°00'19"	60.00'	52.37'	27.98'	50.72'	N13°37'03"E
26B	44°54'02"	60.00'	47.02'	24.79'	45.83'	N11°03'53"E
27	47°12'24"	60.00'	49.43'	26.22'	48.05'	N62°13'23"E
28	54°42'40"	60.00'	57.29'	31.04'	57.29'	S56°49'08"E
29	75°32'28"	60.00'	79.11'	46.49'	73.50'	S01°41'31"E
30A	42°20'13"	60.00'	44.34'	23.23'	43.33'	S57°14'49"W
30B	44°54'02"	60.00'	47.02'	24.79'	45.83'	S55°59'55"W
30C	00°33'23"	985.03'	9.57'	4.78'	9.57'	S33°14'12"W
31	08°23'48"	985.03'	109.98'	55.05'	109.92'	S29°45'36"W
32A	00°37'28"	985.03'	96.69'	48.39'	96.65'	S23°44'58"W
32B	89°32'40"	25.00'	39.07'	24.80'	35.22'	S24°44'39"E
35	02°27'20"	705.00'	30.22'	15.11'	30.21'	S08°17'06"E
36	07°04'34"	705.00'	37.07'	43.59'	37.07'	S63°31'09"E
37	06°54'29"	705.00'	85.00'	42.55'	84.95'	S56°31'37"E
38	06°54'30"	705.00'	85.00'	42.55'	84.95'	S49°37'08"E
39	07°11'16"	705.00'	88.44'	44.28'	88.39'	S40°56'42"E
40	01°26'28"	705.00'	30.00'	15.00'	30.00'	S36°07'55"E



RIGHT-OF-WAY CURVE DATA

NO.	DELTA	RADIUS	LENGTH	TANGENT	CHORD	CHORD BEARING
1	91°44'13"	25.00'	41.03'	25.77'	35.89'	S15°06'37"W
2	93°51'50"	25.00'	40.96'	28.75'	36.53'	S77°41'30"E
3	269°48'04"	60.00'	282.54'	---	85.00'	S34°37'29"E
4	21°33'46"	655.00'	259.37'	136.61'	267.47'	S90°57'29"E
5	13°35'25"	352.02'	83.73'	42.06'	83.54'	N37°41'30"E
6	38°34'01"	330.59'	205.22'	106.04'	201.94'	N26°42'11"E
7	51°30'01"	60.00'	53.93'	28.94'	52.14'	S16°30'07"W
8	269°17'37"	60.00'	202.00'	---	85.37'	S87°56'02"W
9	38°13'04"	380.59'	283.87'	131.86'	249.19'	S28°22'40"W
10	12°34'40"	1035.03'	227.21'	114.07'	226.76'	N27°13'34"E
11	269°48'04"	60.00'	202.54'	---	85.00'	S56°59'04"E
12	12°34'40"	985.03'	216.24'	108.55'	215.80'	S27°13'34"E
13	87°34'27"	25.00'	38.36'	24.10'	34.70'	N56°32'01"E
14	01°58'11"	659.18'	22.68'	11.34'	22.68'	N23°33'53"E
15	01°36'42"	609.18'	17.15'	8.58'	17.15'	S23°44'37"W
16	92°27'02"	25.00'	40.34'	26.09'	36.10'	S23°17'15"W
17	05°26'10"	25.00'	37.28'	23.09'	33.92'	S67°46'00"W
18	02°39'48"	328.70'	15.11'	7.56'	15.11'	S26°22'40"W
19	00°50'00"	275.00'	4.00'	2.00'	4.00'	N37°17'34"E
20	90°23'20"	25.00'	28.00'	27.96'	37.27'	N21°19'08"W
21	38°15'16"	705.00'	476.86'	247.95'	467.82'	N50°08'08"W
22	87°23'20"	25.00'	38.13'	23.89'	34.54'	N74°27'10"W



5248 Old Towne Road, Suite 1
 Williamsburg, Virginia 23188
 (804) 253-0040
 Fax (804) 220-8994

PLAT OF SUBDIVISION
THE MEADOWS
 SECTION IV, PHASE I
 OWNER/DEVELOPER: MEADOWS II LIMITED PARTNERSHIP
 BERKELEY, DISTRICT JAMES CITY COUNTY VIRGINIA



NO.	DATE	REVISION / COMMENT / NOTE	BY

Designed by: [Signature]
 Drawn by: [Signature]
 Scale: 1"=100'
 Date: JULY, 1995
 Project No.: 7820
 Drawing No.: 2 of 2