

OTHER PROPERTY OWNED BY GREENSPRINGS PLANTATION, INC.

THE FARM NEAR CENTERLINE OF CENTERLINE OF 20' DRAINAGE EASEMENT (TYP.)

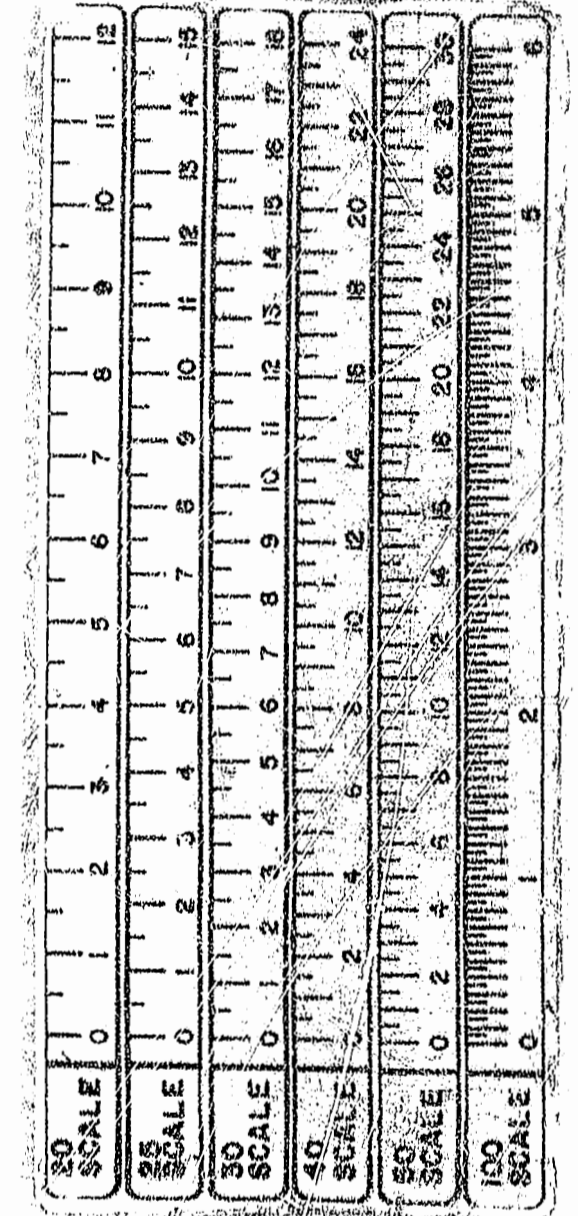
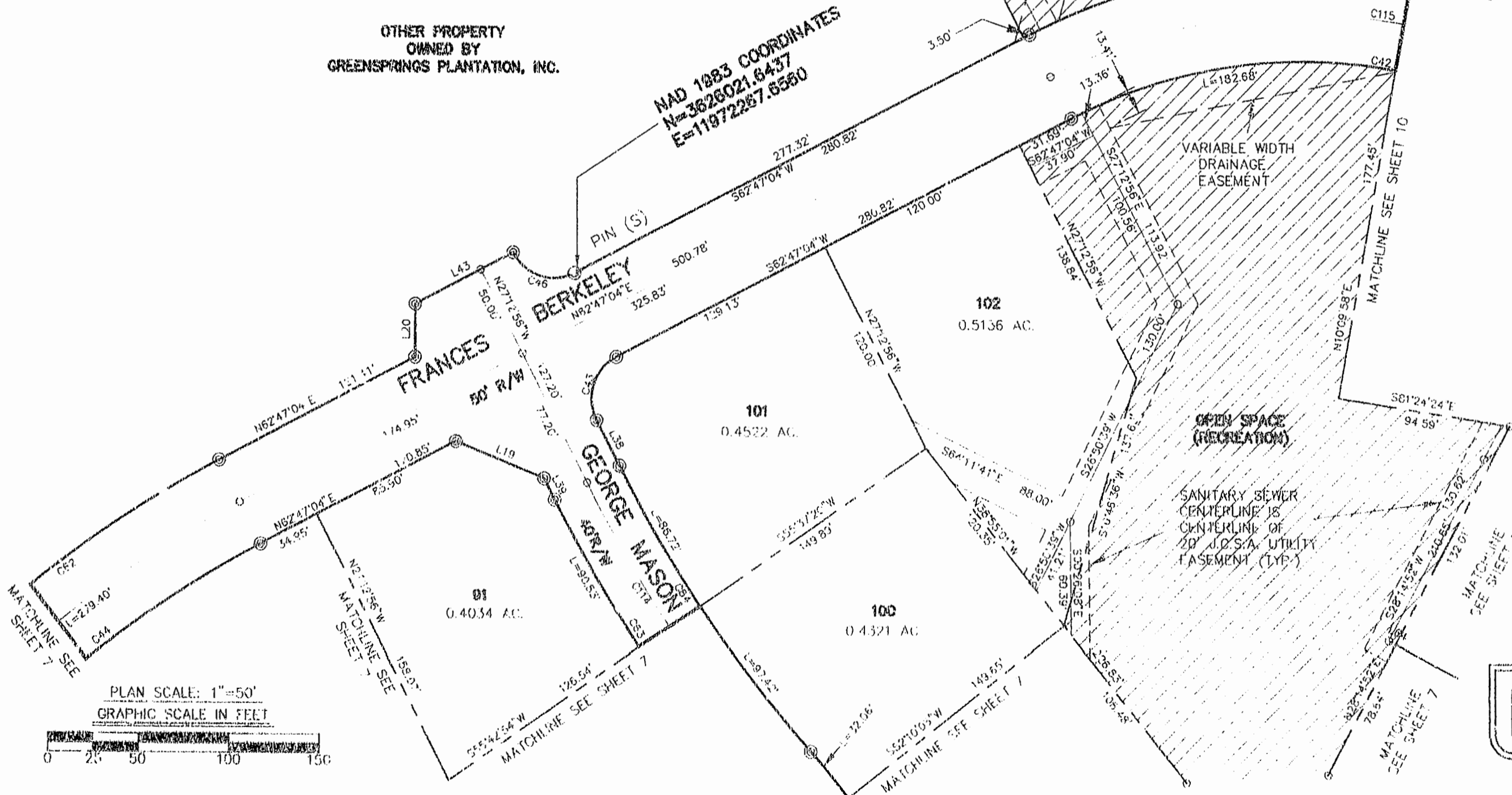
OPEN SPACE (RECREATION)

THE FARM NEAR CENTERLINE OF CENTERLINE OF 20' DRAINAGE EASEMENT (TYP.)

OPEN SPACE

OTHER PROPERTY OWNED BY GREENSPRINGS PLANTATION, INC.

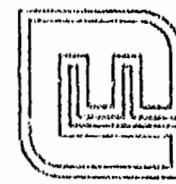
MAD 1883 COORDINATES
N=3626021.8437
E=11972267.6560



PLAN REVISIONS
REV. NO. 02 7/14/95

DATE: August 1995
REV. NO. 750 7/14/95
REV. NO. 797 7/14/95

GREENSPRINGS PLANTATION
PHASE ONE
BEING A SUBDIVISION OF PROPERTY OF
GREENSPRINGS PLANTATION INC.
BERKELEY DISTRICT
JAMES CITY COUNTY, VIRGINIA
SCALE: 1"=50' 7/14/95



Langley and McDonald, P.C.

Engineers - Surveyors - Planners
Landscape Architects - Environmental Consultants

VIRGINIA BEACH

WILLIAMSBURG