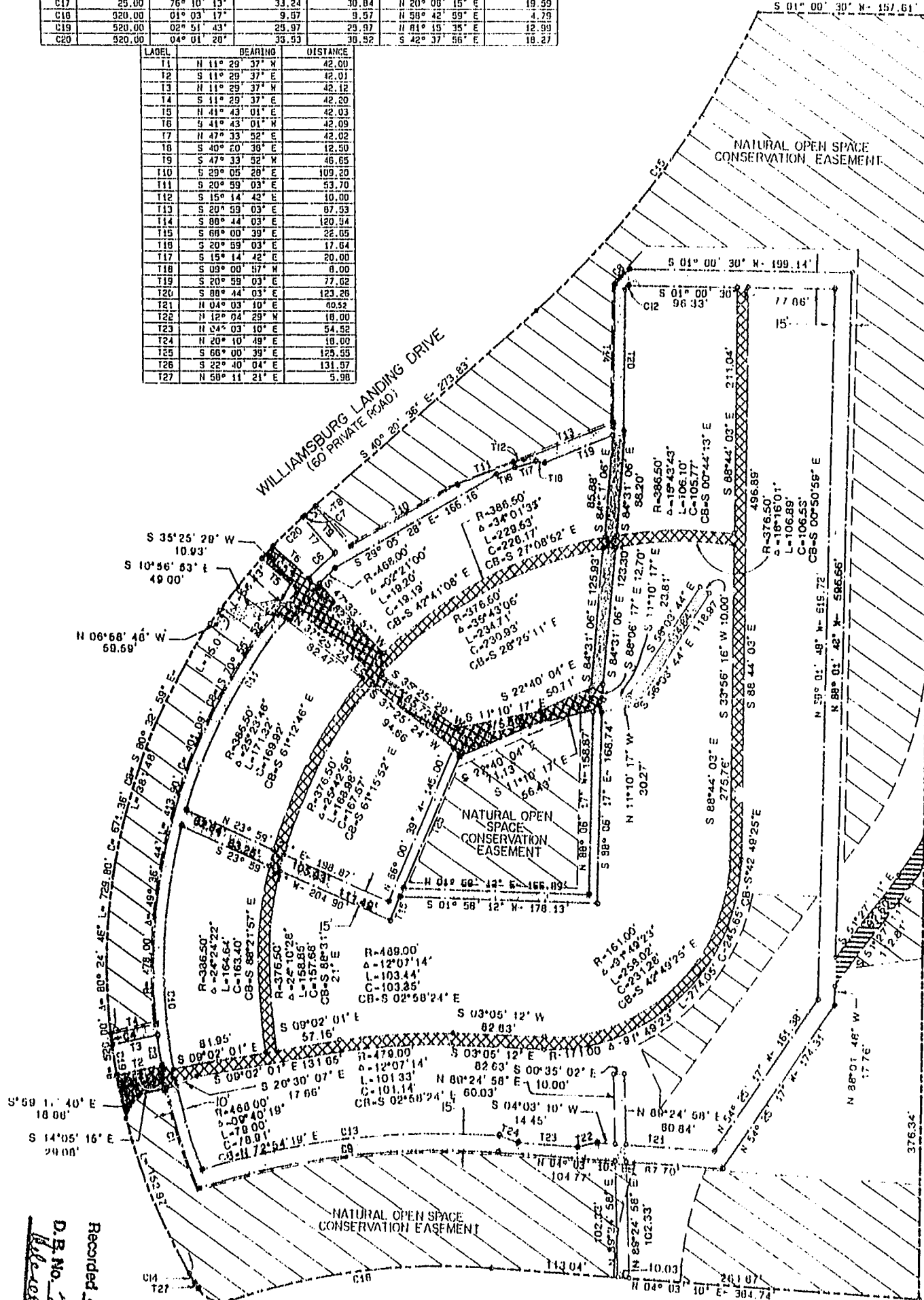


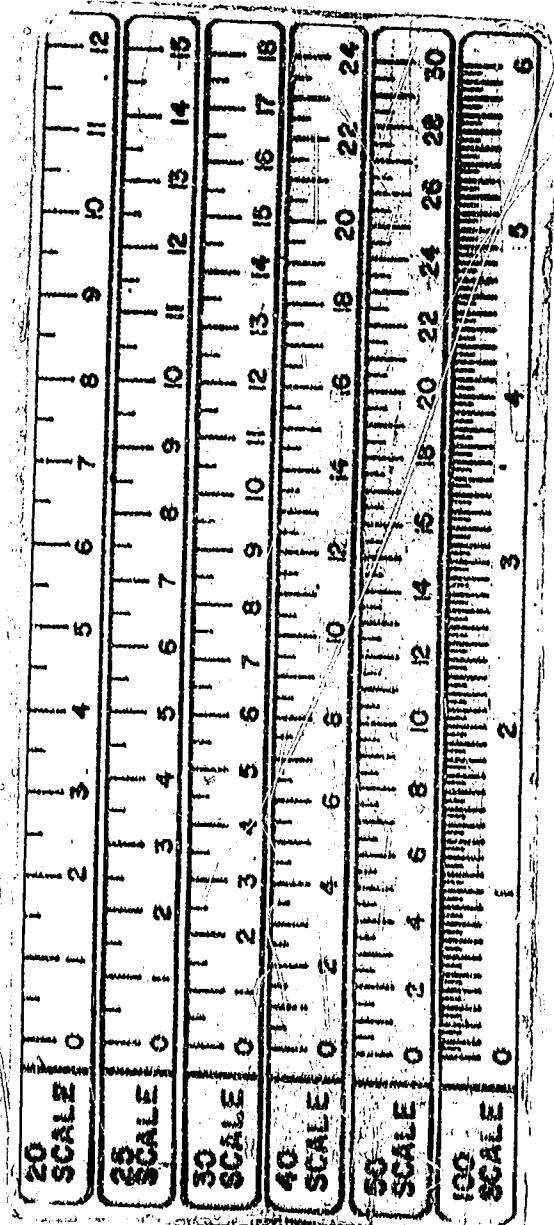
LABEL	RADIUS	CENTRAL ANGLE	ARC LENGTH	CHORD LENGTH	CHORD BEARING	TAN. LENGTH
C1	478.00	11° 20' 37"	84.44	84.44	N 72° 01' 32"	41.47
C2	520.00	03° 43' 47"	33.45	33.45	N 77° 57' 50"	16.83
C3	478.00	03° 06' 31"	25.98	25.98	N 01° 30' 00"	12.99
C4	520.00	01° 06' 20"	10.03	10.03	N 03° 14' 37"	5.02
C5	520.00	01° 39' 17"	15.02	15.02	S 45° 29' 19"	7.51
C6	478.00	03° 51' 50"	32.24	32.24	S 42° 23' 32"	16.12
C7	520.00	00° 16' 16"	2.51	2.51	S 40° 20' 54"	1.25
C8	045.01	01° 10' 16"	19.26	19.26	S 45° 43' 48"	9.63
C9	718.00	21° 45' 02"	272.57	270.93	N 08° 49' 21"	137.94
C10	468.00	25° 57' 47"	212.07	210.24	N 07° 24' 00"	107.68
C11	468.00	23° 10' 40"	190.54	189.23	S 00° 54' 11"	96.51
C12	855.91	00° 10' 57"	4.22	4.22	S 45° 29' 19"	2.11
C13	733.00	21° 04' 12"	289.85	288.04	N 08° 20' 58"	130.32
C14	520.00	01° 03' 17"	9.57	9.57	N 58° 42' 59"	4.79
C15	814.16	23° 20' 49"	331.76	329.47	S 82° 01' 01"	160.21
C16	618.00	22° 02' 02"	238.89	236.43	N 08° 57' 51"	119.93
C17	25.00	76° 10' 13"	33.24	30.04	N 20° 08' 15"	19.59
C18	520.00	01° 03' 17"	9.57	9.57	N 58° 42' 59"	4.79
C19	520.00	02° 51' 43"	29.97	29.97	N 81° 19' 35"	12.99
C20	520.00	04° 01' 20"	35.53	30.52	S 42° 37' 56"	18.27



LABEL	BEARING	DISTANCE
T1	N 11° 29' 37" W	42.00
T2	S 11° 29' 37" E	42.01
T3	N 11° 29' 37" W	42.12
T4	S 11° 29' 37" E	42.20
T5	N 41° 43' 01" E	42.03
T6	S 41° 43' 01" W	42.09
T7	N 47° 33' 32" E	42.02
T8	S 40° 20' 30" W	12.50
T9	S 47° 33' 32" W	46.65
T10	S 29° 05' 28" E	109.20
T11	S 20° 59' 03" E	53.70
T12	S 15° 14' 42" E	10.00
T13	S 20° 59' 03" E	87.93
T14	S 88° 44' 03" E	120.94
T15	S 66° 00' 39" E	22.65
T16	S 20° 59' 03" E	17.64
T17	S 15° 14' 42" E	20.00
T18	S 03° 00' 57" W	8.00
T19	S 20° 59' 03" E	77.62
T20	S 88° 44' 03" E	123.26
T21	N 04° 03' 10" E	80.52
T22	N 12° 04' 29" W	10.00
T23	N 04° 03' 10" E	54.52
T24	N 20° 10' 49" E	10.00
T25	S 66° 00' 39" E	125.53
T26	S 22° 40' 04" E	131.07
T27	N 58° 11' 21" E	5.98



N/W
WAL. TRIP



Recorded
D.P. No. 748
pages 530
1.05 p.m.
Clerk

EASEMENT LEGEND

	NATURAL OPEN SPACE CONSERVATION EASEMENT
	VIRGINIA POWER AND C&P UTILITY EASEMENT
	VIRGINIA POWER UTILITY EASEMENT
	VIRGINIA NATURAL GAS UTILITY EASEMENT
	JAMES CITY SERVICE AUTHORITY UTILITY EASEMENT
	COMMON UTILITY EASEMENT

BC-335160-P
SHEET 1 OF 1

EASEMENT PLAT
WILLIAMSBURG LANDING
THE COTTAGES
OWNED BY
WILLIAMSBURG LANDING, INC.
JAMES CITY COUNTY VIRGINIA
DATE: MARCH 6, 1995 — SCALE 1" = 100'

Langley and McDonald
A PROFESSIONAL CORPORATION
ENGINEERS • PLANNERS • SURVEYORS
VIRGINIA BEACH - WILLIAMSBURG, VIRGINIA

