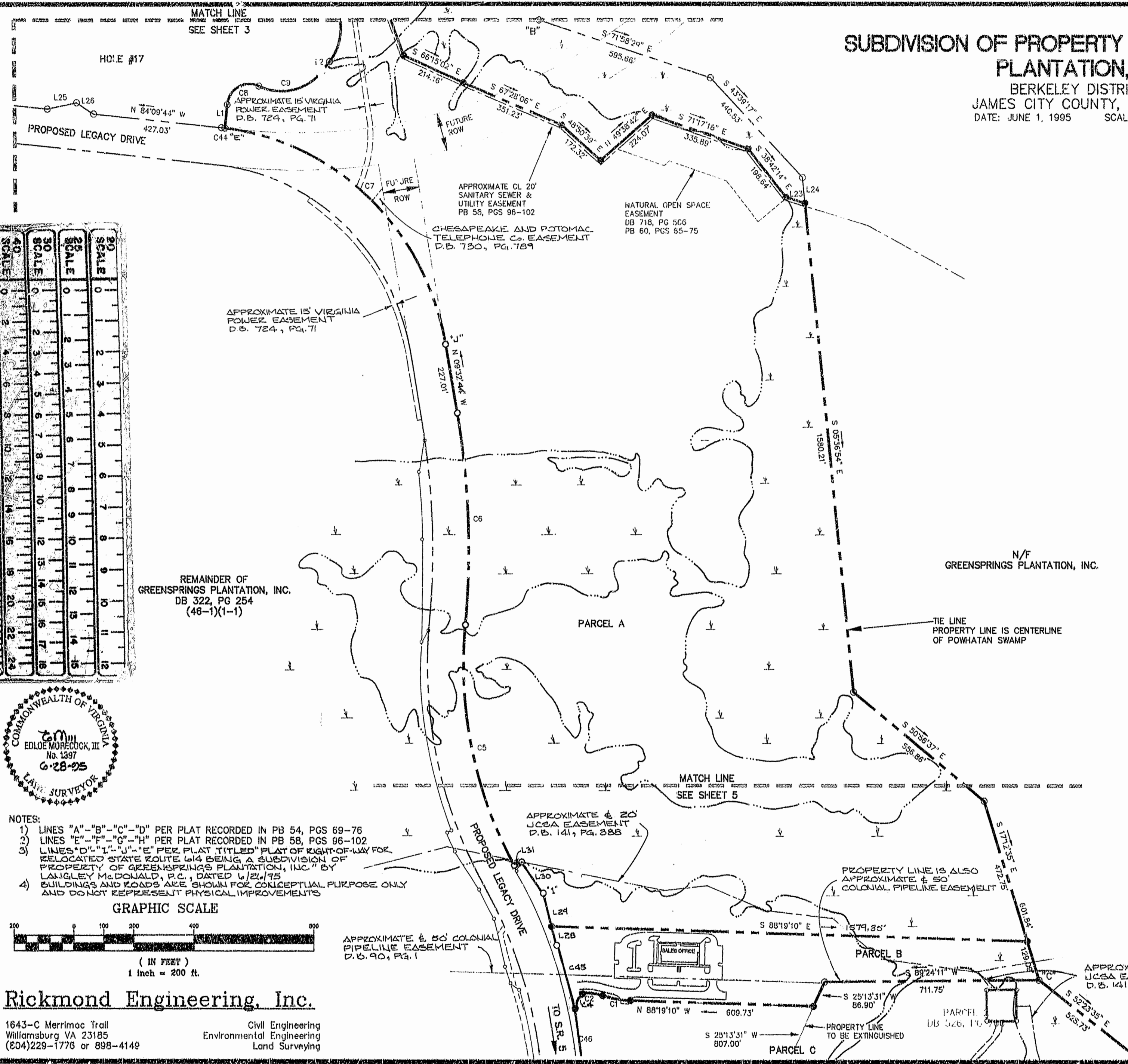
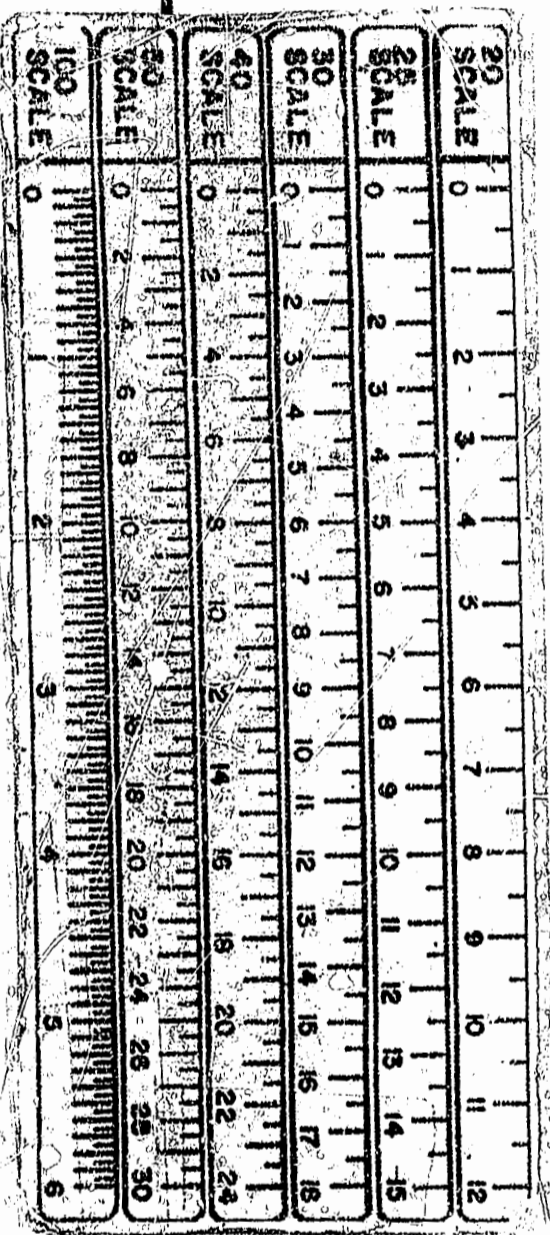


SUBDIVISION OF PROPERTY OF GREENSPRINGS PLANTATION, INC.

BERKELEY DISTRICT
JAMES CITY COUNTY, VIRGINIA
DATE: JUNE 1, 1995 SCALE: 1"=200'

MATCH LINE
SEE SHEET 3

HO: E #17



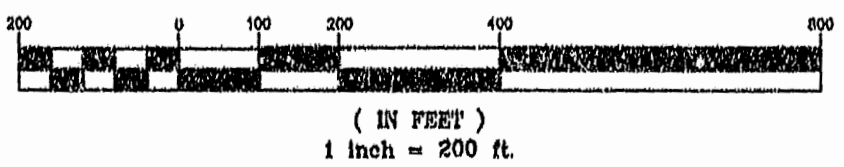
REMAINDER OF
GREENSPRINGS PLANTATION, INC.
DB 322, PG 254
(46-1)(1-1)

N/F
GREENSPRINGS PLANTATION, INC.



- NOTES:
- 1) LINES "A"-"B"-"C"-"D" PER PLAT RECORDED IN PB 54, PGS 69-76
 - 2) LINES "E"-"F"-"G"-"H" PER PLAT RECORDED IN PB 58, PGS 96-102
 - 3) LINES "I"-"J"-"K"-"L" PER PLAT TITLED "PLAT OF RIGHT-OF-WAY FOR RELOCATED STATE ROUTE 614 BEING A SUBDIVISION OF PROPERTY OF GREENSPRINGS PLANTATION, INC." BY LANGLEY McDONALD, P.C., DATED 6/26/95
 - 4) BUILDINGS AND ROADS ARE SHOWN FOR CONCEPTUAL PURPOSE ONLY AND DO NOT REPRESENT PHYSICAL IMPROVEMENTS

GRAPHIC SCALE



Rickmond Engineering, Inc.

1643-C Merrimac Trail
Williamsburg VA 23185
(804)229-1776 or 898-4149

Civil Engineering
Environmental Engineering
Land Surveying

1:35 p.m.
Recorded 15th day of August, 1995
B. B. No. 747, pages 968
[Signature] Clerk

PLAT RECORDED IN
P.B. NO. 62, PAGES 35-39