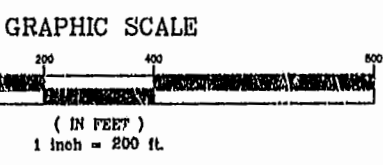
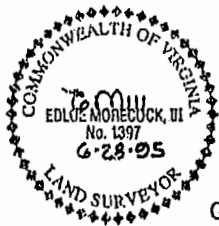
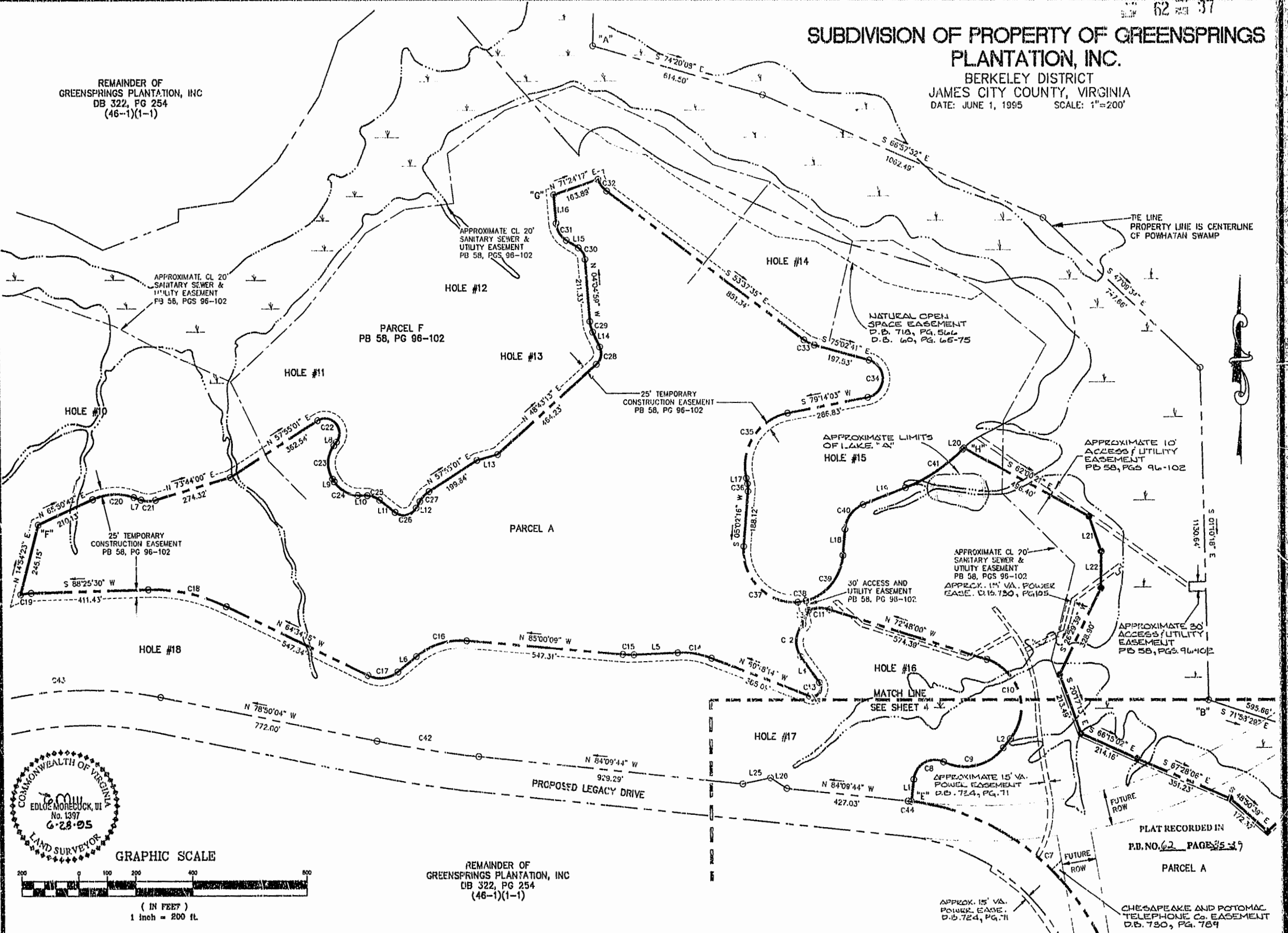


# SUBDIVISION OF PROPERTY OF GREENSPRINGS PLANTATION, INC.

BERKELEY DISTRICT  
JAMES CITY COUNTY, VIRGINIA  
DATE: JUNE 1, 1995 SCALE: 1"=200'

REMAINDER OF  
GREENSPRINGS PLANTATION, INC  
DB 322, PG 254  
(46-1)(1-1)



REMAINDER OF  
GREENSPRINGS PLANTATION, INC  
DB 322, PG 254  
(46-1)(1-1)

PLAT RECORDED IN  
R.D. NO. 62 PAGE 35-39

PARCEL A

CHEESAPEAKE AND POTOMAC  
TELEPHONE CO. EASEMENT  
D.B. 780, PG. 789

## Rickmond Engineering, Inc.

1643-C Merrimac Trail  
Williamsburg VA 23185  
(804)223-1770 or 898-4149

Civil Engineering  
Environmental Engineering  
Land Surveying

### NOTES:

- 1) LINES "A"- "B"- "C"- "D" PER PLAT RECORDED IN PB 54, PGS 69-76
- 2) LINES "E"- "F"- "G"- "H" PER PLAT RECORDED IN PB 58, PGS 96-102
- 3) LINES "I"- "J"- "K"- "L" PER PLAT TITLED "PLAT OF RIGHT-OF-WAY FOR RELOCATED STATE ROUTE 104 BEING A SUBDIVISION OF PROPERTY OF GREENSPRINGS PLANTATION, INC." BY LANGLEY McDONALD, P.C. DATED 6/26/95

Recorded 1st day of August 1995  
B.B. No. 1442 pages 962  
Mills, III, Clerk