

- ⓧ Δ = 107°51'23"  
R = 50.00'  
T = 88.64'  
L = 94.12'  
C = 80.83'  
CB = N 25°38'50" W
- Ⓨ Δ = 07°08'07"  
R = 475.00'  
T = 29.61'  
L = 59.15'  
C = 59.12'  
CB = N 83°08'35" W
- Ⓩ Δ = 13°42'38"  
R = 525.00'  
T = 63.12'  
L = 125.63'  
C = 125.33'  
CB = 79°51'19" W

- Ⓐ Δ = 20°44'26"  
R = 145.00'  
T = 28.53'  
L = 52.49'  
C = 52.20'  
CB = N 02°31'13" E

- Ⓑ Δ = 08°14'58"  
R = 145.00'  
T = 10.46'  
L = 20.88'  
C = 20.86'  
CB = N 11°58'29" W

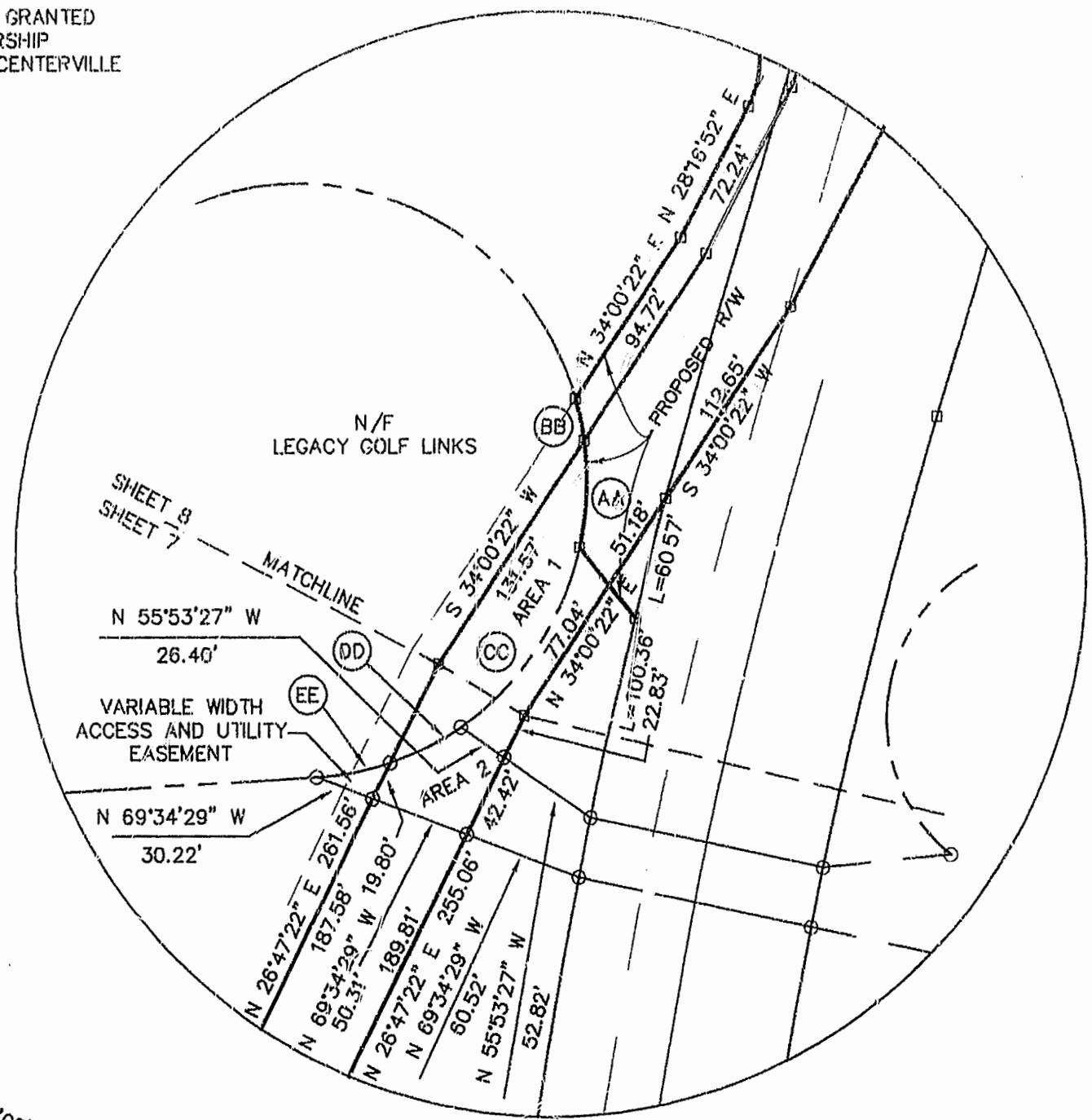
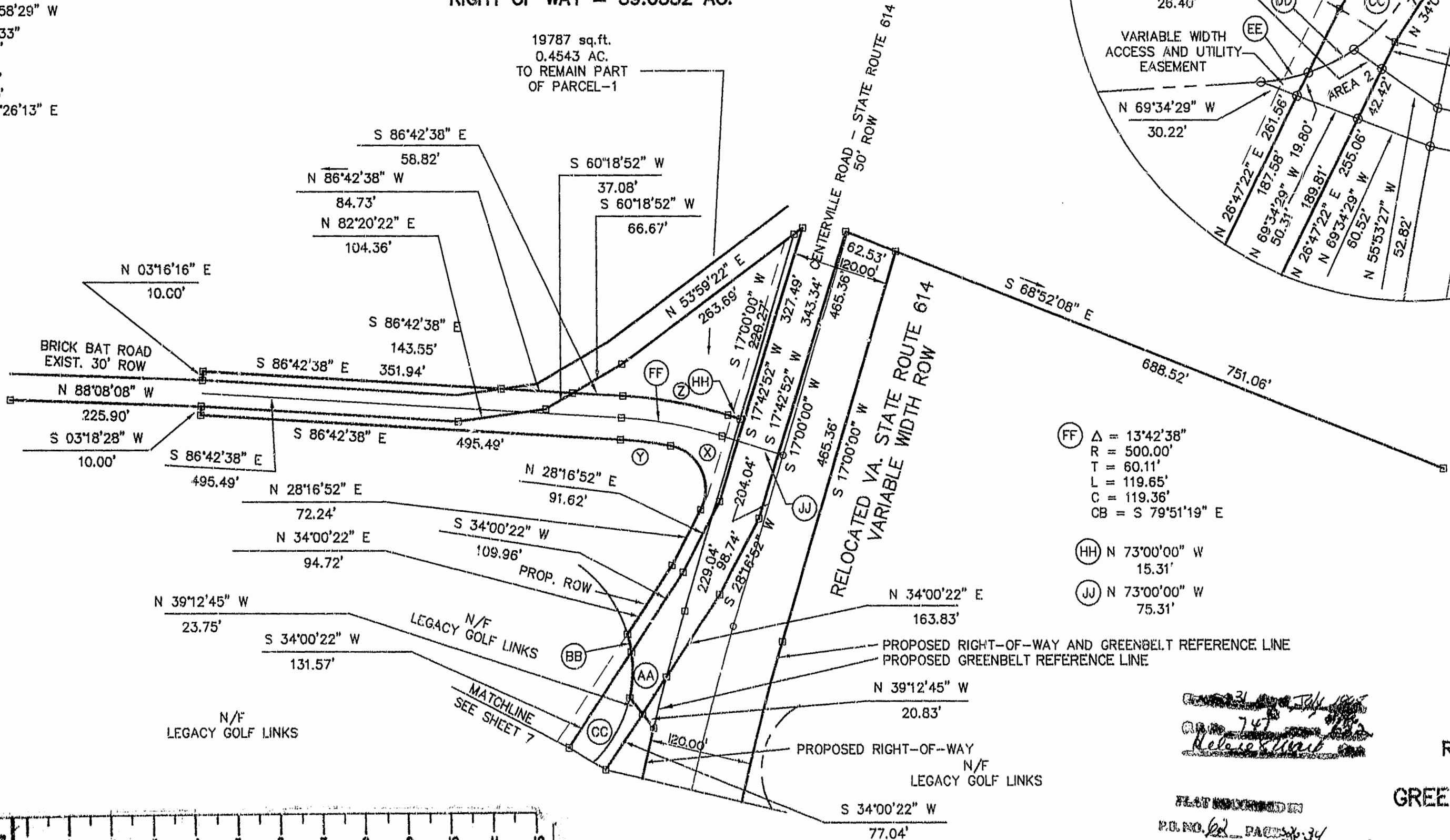
- Ⓒ Δ = 43°05'33"  
R = 145.00'  
T = 57.25'  
L = 109.06'  
C = 106.50'  
CB = N 34°26'13" E

AREA 1 - TO BE CONVEYED TO LEGACY (GREENSPRINGS) LIMITED PARTNERSHIP SUBJECT TO ABANDONMENT OF EXISTING CENTERVILLE ROAD RIGHT-OF-WAY.

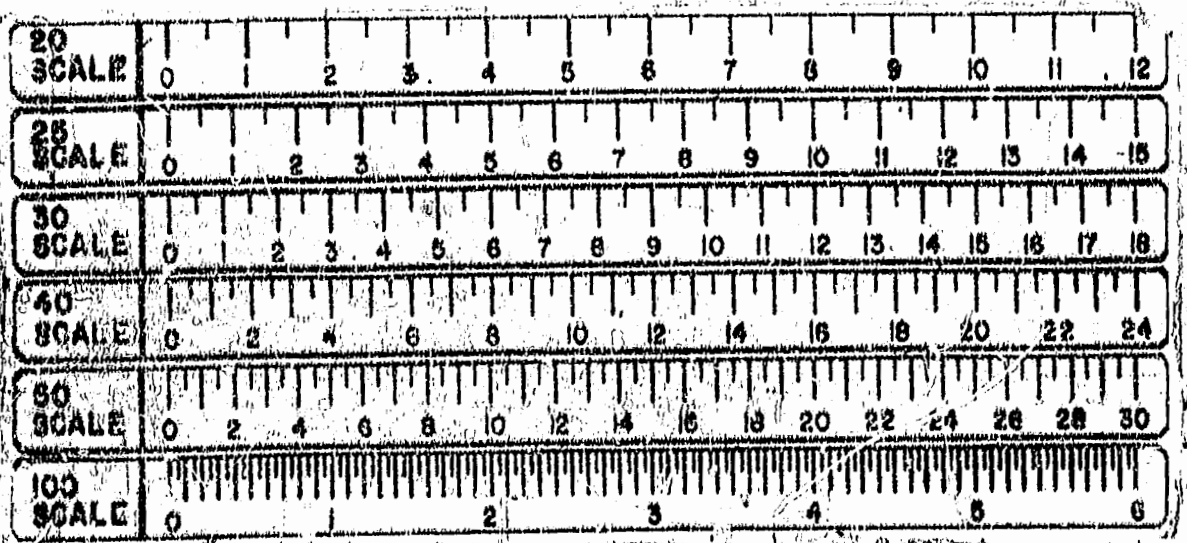
AREA 2 - ACCESS AND UTILITIES EASEMENT TO BE GRANTED LEGACY (GREENSPRINGS) LIMITED PARTNERSHIP SUBJECT TO ABANDONMENT OF EXISTING CENTERVILLE ROAD RIGHT-OF-WAY.

TOTAL AREA OF RELOCATED RIGHT OF WAY = 39.6332 AC.

19787 sq.ft.  
0.4543 AC.  
TO REMAIN PART OF PARCEL-1



- Ⓕ Δ = 13°42'38"  
R = 500.00'  
T = 60.11'  
L = 119.65'  
C = 119.36'  
CB = S 79°51'19" E
- Ⓖ N 73°00'00" W  
15.31'
- Ⓙ N 73°00'00" W  
75.31'



PLAT NO. 747  
RELEASED

PLAT NO. 62  
PAGE 34

PLAT OF RIGHT OF WAY FOR RELOCATED STATE ROUTE 614 BEING A SUBDIVISION OF PROPERTY OF GREENSPRINGS PLANTATION, INC. BERKELEY DISTRICT JAMES CITY COUNTY, VIRGINIA DATE: 6/26/95 SCALE: 1"=100' SHEET 8 OF 9



**Langley and McDonald, P.C.**  
Engineers - Surveyors - Planners  
Landscape Architects - Environmental Consultants  
VIRGINIA BEACH WILLIAMSBURG