

(S)  $\Delta = 30'10'25''$   $R = 2087.00'$   $T = 562.60'$   $L = 1099.0'$   $C = 1086.41'$   $CB = N 18'19'51'' W$   
 (T)  $\Delta = 04'53'19''$   $R = 1967.00'$   $T = 83.97'$   $L = 167.83'$   $C = 167.78'$   $CB = N 06'19'19'' W$

(O)  $\Delta = 18'15'29''$   $R = 1713.00'$   $T = 275.27'$   $L = 545.87'$   $C = 543.57'$   $CB = S 12'22'23'' E$   
 (P)  $\Delta = 18'15'29''$   $R = 1833.00'$   $T = 294.55'$   $L = 584.11'$   $C = 581.64'$   $CB = N 12'22'23'' W$   
 (R)  $\Delta = 00'38'01''$   $R = 1967.00'$   $T = 10.88'$   $L = 21.76'$   $C = 21.75'$   $CB = S 03'33'39'' E$

$\Delta = 20'12'02''$   $R = 1215.00'$   $T = 216.43'$   $L = 428.37'$   $C = 428.15'$   $CB = N 86'42'42'' E$

N/F LEGACY GOLF LINKS

N/F LEGACY (GREENSPRINGS) LIMITED PARTNERSHIP, A VIRGINIA LIMITED PARTNERSHIP

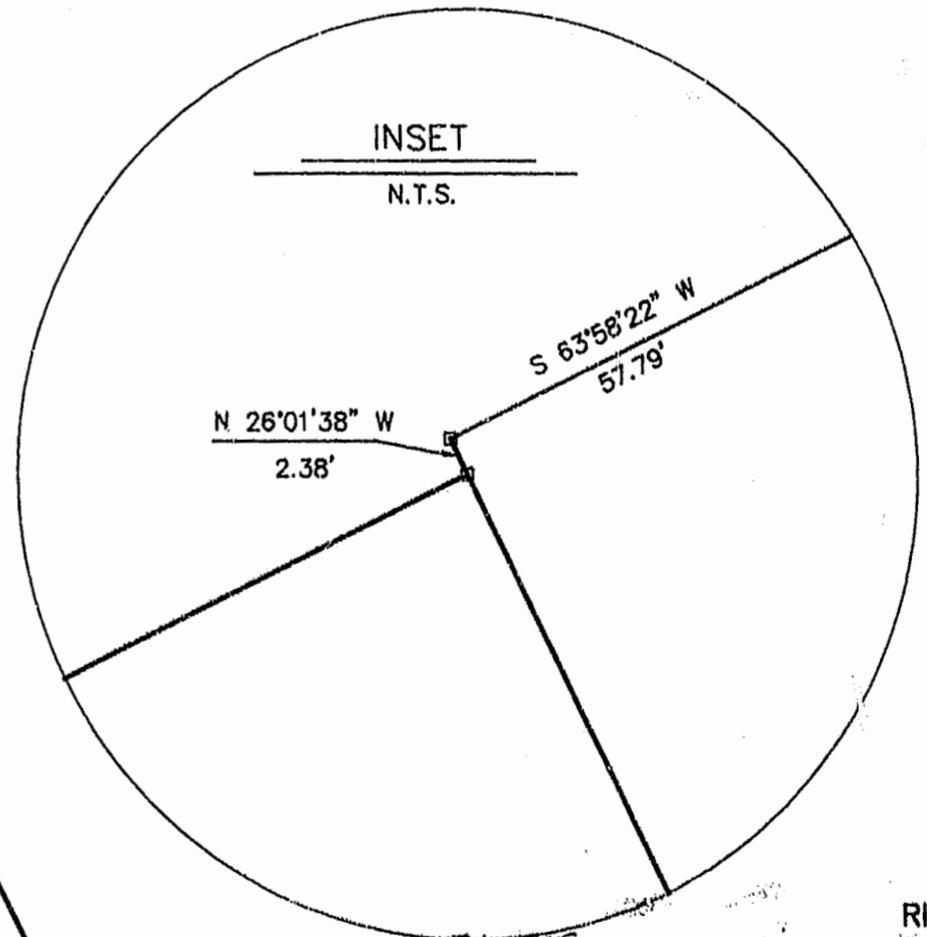
30' ACCESS AND UTILITY EASEMENT HEREBY VACATED

N/F GREENSPRINGS PLANTATIONS, INC.

N/F GREENSPRINGS PLANTATIONS, INC.

U.S.A. GREENSPRINGS PLANTATION NATIONAL HISTORIC SITE

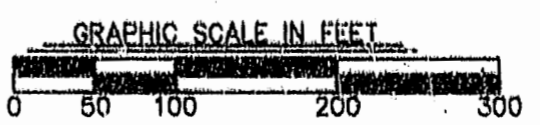
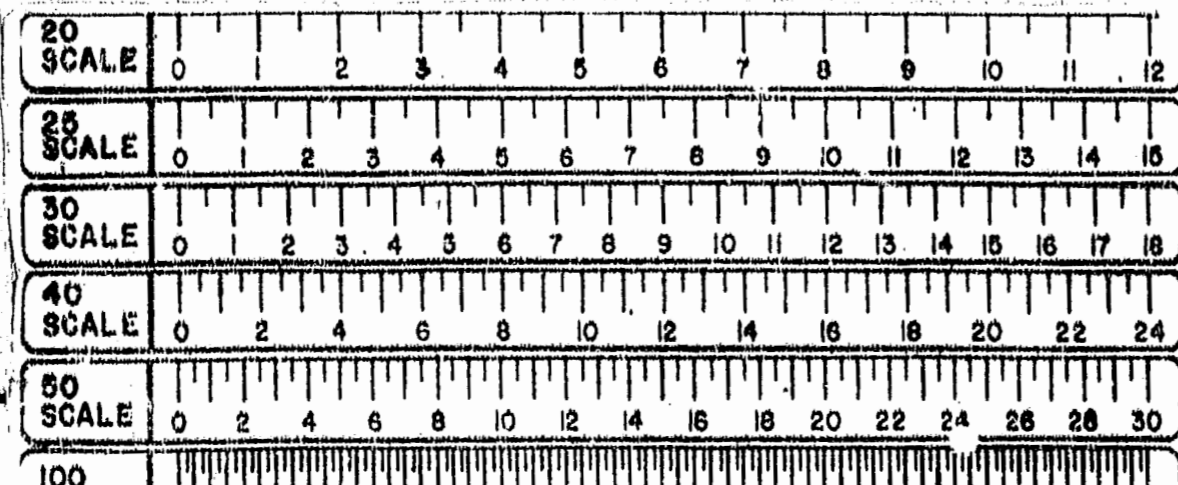
NOTE: EXISTING ROUTE 614 RIGHT-OF-WAY IS TO BE RESERVED BY V.D.O.T.



Recorded 31 day of July 1995  
 D.B. No. 747 pages 6, 32  
*Debra S. White*

PLAT RECORDED IN  
 P.B. NO. 62 PAGE 26-35

PLAT OF  
 RIGHT OF WAY  
 FOR  
**RELOCATED STATE ROUTE 614**  
 BEING A SUBDIVISION OF  
 PROPERTY OF  
**GREENSPRINGS PLANTATION, INC.**  
 BERKELEY DISTRICT  
 JAMES CITY COUNTY, VIRGINIA  
 DATE: 6/26/95 SCALE: 1"=100'  
 SHEET 5 OF 9



**Langlely and McDonald, P.C.**  
 Engineers - Surveyors - Planners  
 Landscape Architects - Environmental Consultants  
 VIRGINIA BEACH WILLIAMSBURG