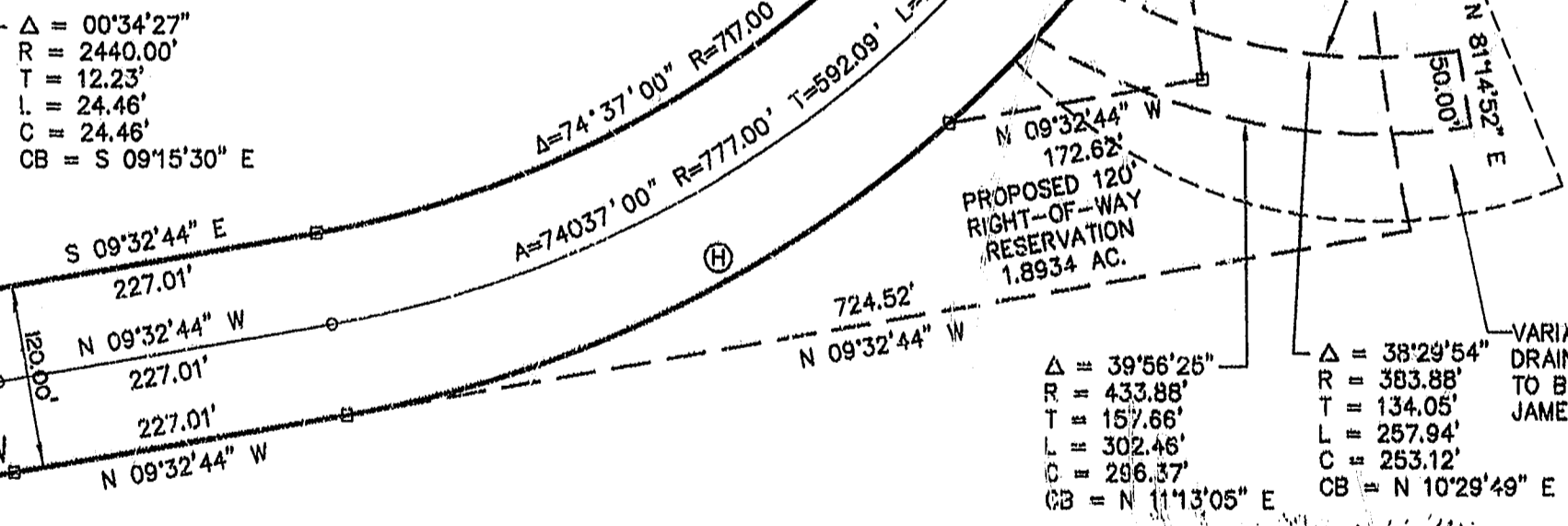
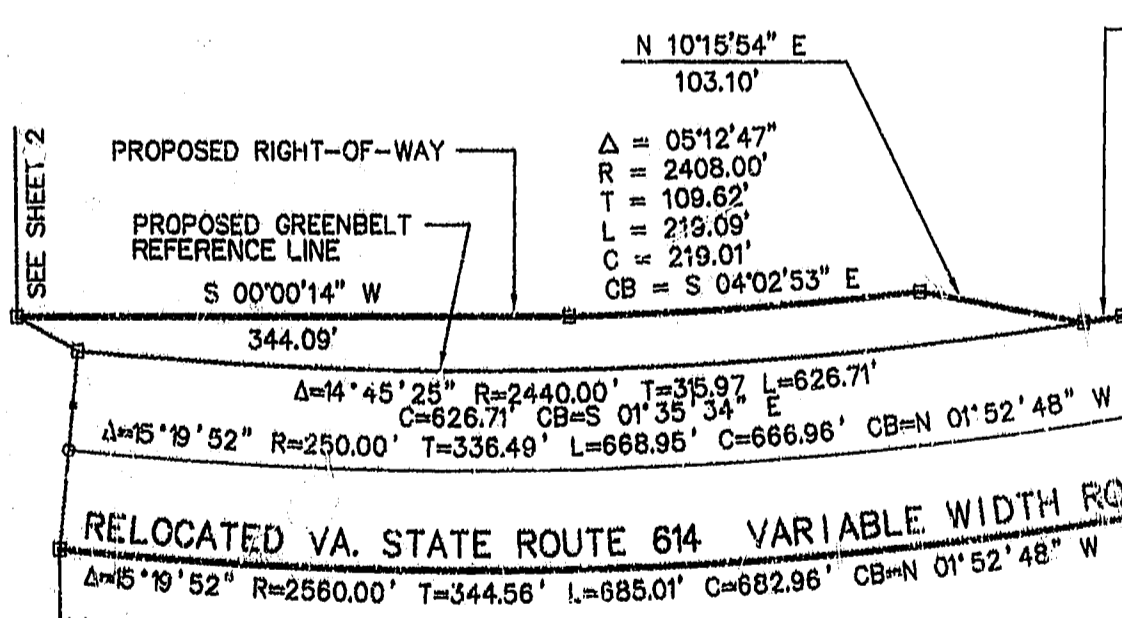
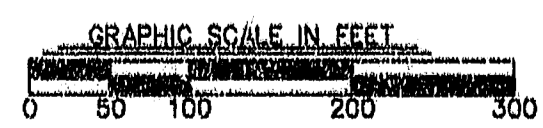
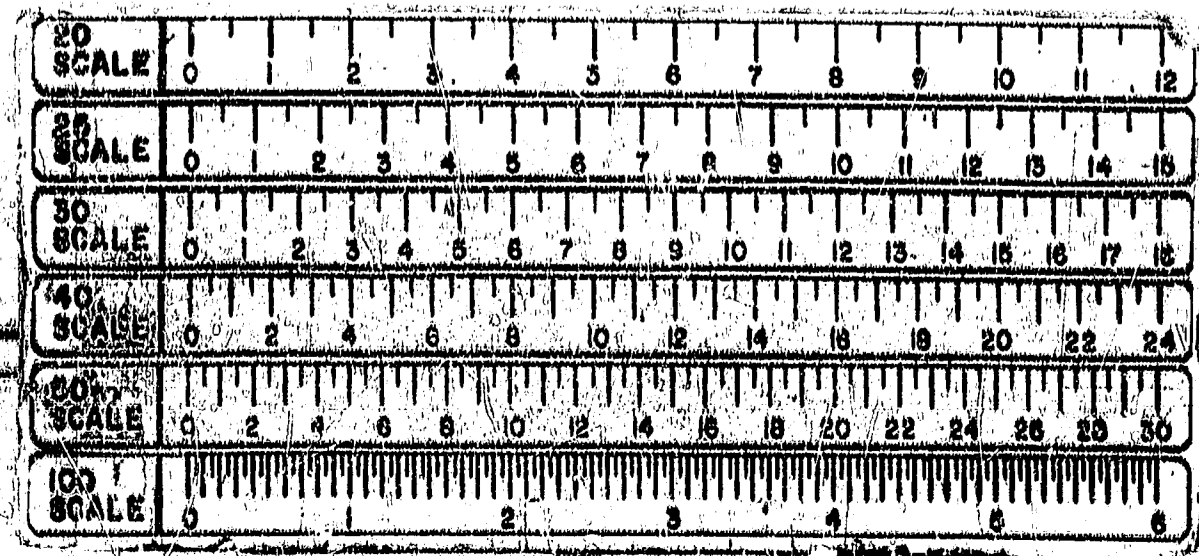


- (H) Δ = 31°03'35"
R = 837.00'
T = 232.59'
L = 453.73'
C = 448.20'
CB = N 25°04'31" W
- (I) Δ = 16°11'05"
R = 837.00'
T = 119.01'
L = 236.43'
C = 235.65'
CB = N 48°41'51" W
- (J) Δ = 27°22'21"
R = 837.00'
T = 203.82'
L = 399.87'
C = 398.07'
CB = N 70°28'34" W
- (K) Δ = 04°18'35"
R = 1983.00'
T = 74.62'
L = 149.16'
C = 149.13'
CB = S 04°20'36" W
- (L) Δ = 07°08'22"
R = 837.00'
T = 52.21'
L = 104.29'
C = 104.23'
CB = N 53°13'13" W
- (M) Δ = 17°13'44"
R = 1863.00'
T = 282.23'
L = 568.21'
C = 558.10'
CB = S 87°13'24" W



PLAT OF
RIGHT OF WAY
FOR
RELOCATED STATE ROUTE 614
BEING A SUBDIVISION OF
PROPERTY OF
GREENSPRINGS PLANTATION, INC.
BERKELEY DISTRICT
JAMES CITY COUNTY, VIRGINIA
DATE: 6/26/95 SCALE: 1"=100'
SHEET 3 OF 9

Langley and McDonald, P.C.
Engineers - Surveyors - Planners
Landscape Architects - Environmental Consultants
VIRGINIA BEACH WILLIAMSBURG



PLAT RECORDED IN
P.B. NO. 002 PAGE 52 OF 34