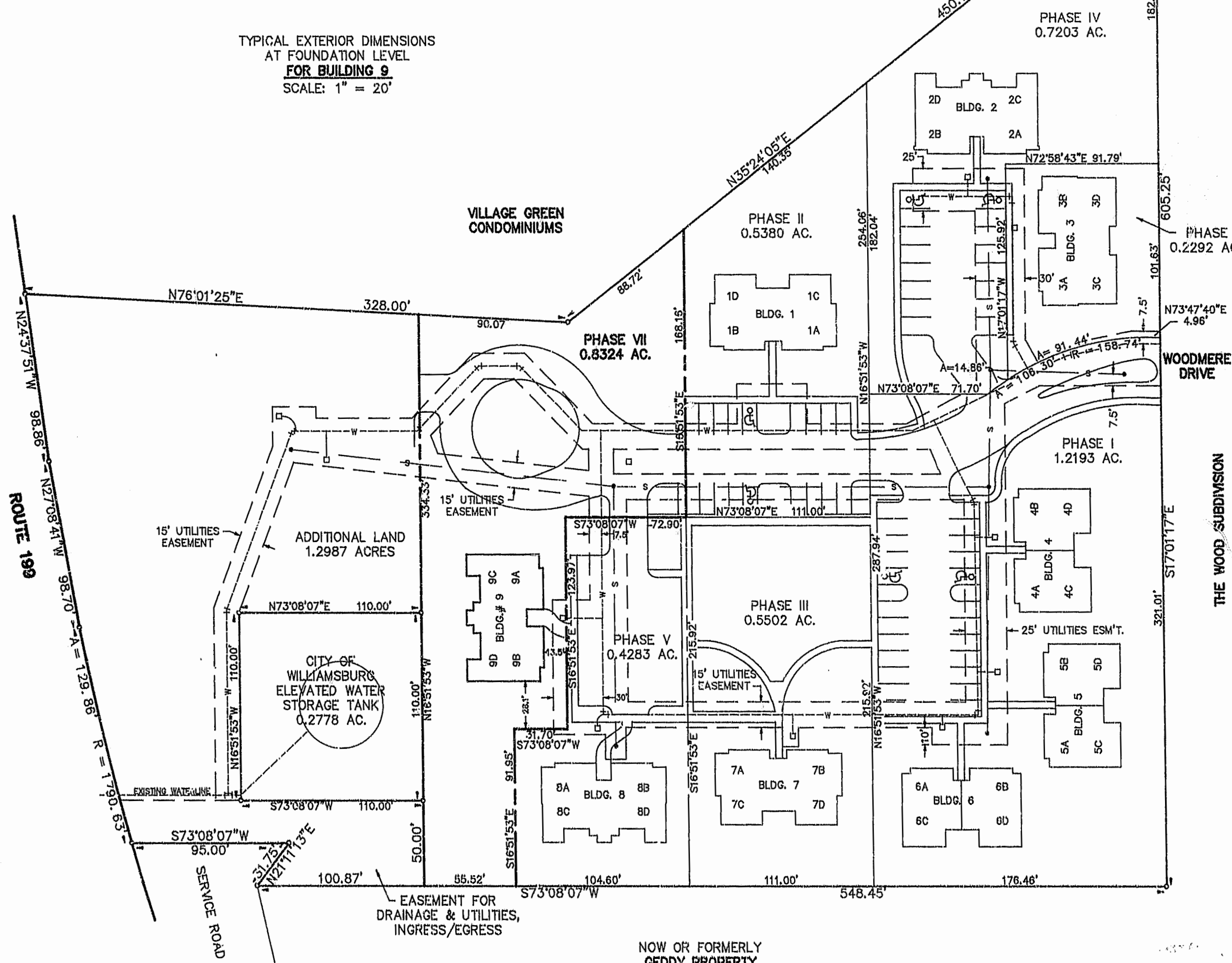
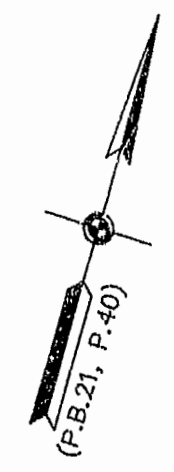
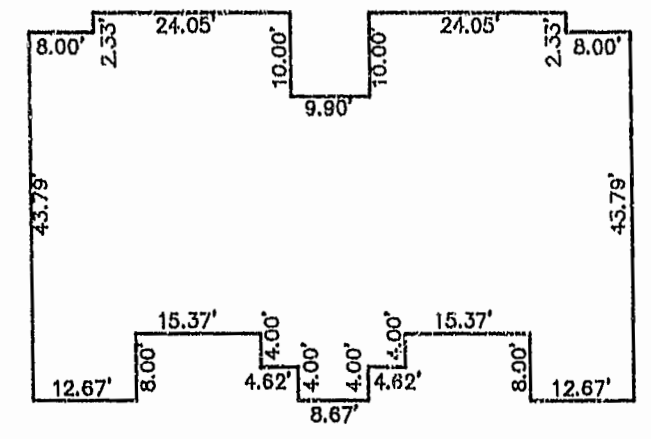
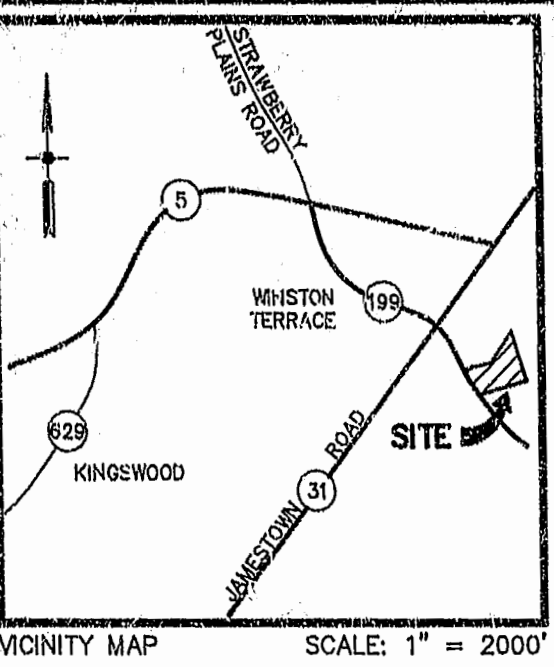


EXHIBIT B  
 CONDOMINIUM PLAT  
 THE WOODLANDS A CONDOMINIUM  
 PHASE VII, BUILDING NO. 9  
 OWNER/DEVELOPER: S.W.N. ASSOCIATES  
 THE CITY OF WILLIAMSBURG, VIRGINIA  
 SCALE: 1" = 50' MAY 24, 1995  
 0 25 50 100 150 200 FEET  
 GRAPHIC SCALE

**THE SIRINE GROUP, LTD.**  
 SURVEYORS • ENGINEERS • PLANNERS  
 P.O. BOX 450, ROUTE 17  
 WHITE MARSH, VIRGINIA 23183

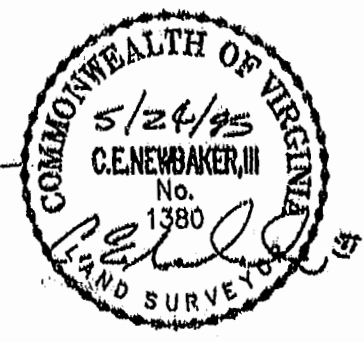


DENOTES PHASE BOUNDARY: \_\_\_\_\_

NOTE:  
 ALL UTILITY EASEMENTS SHOWN HEREON ARE HEREBY DEDICATED TO THE CITY OF WILLIAMSBURG. (SEE "PLAT OF DRAINAGE & UTILITIES EASEMENTS", DATED AUGUST 1987), D.B.81, P.423.

I HEREBY CERTIFY THAT I HAVE SURVEYED THE SUBMITTED LAND AND DO FURTHER CERTIFY THAT THIS PLAT SHOWING LOCATIONS AND DIMENSIONS OF THE SUBMITTED LAND IS ACCURATE AND THE PLAT COMPLIES WITH THE PROVISIONS OF SECTION 55-79.5B (d) OF THE CODE OF VIRGINIA AS AMENDED, ALL UNITS HAVE BEEN SUBSTANTIALLY COMPLETED.

SIGNED: *C.E. Newbaker, III* DATE: 5/24/95  
 C.E. NEWBAKER, III  
 L.S. # 1380



3:53pm  
 Recorded 1st time June 1995  
 D.B. # 114 Page 36  
 William Sirine, Clerk

