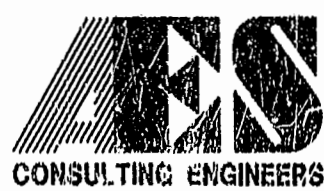
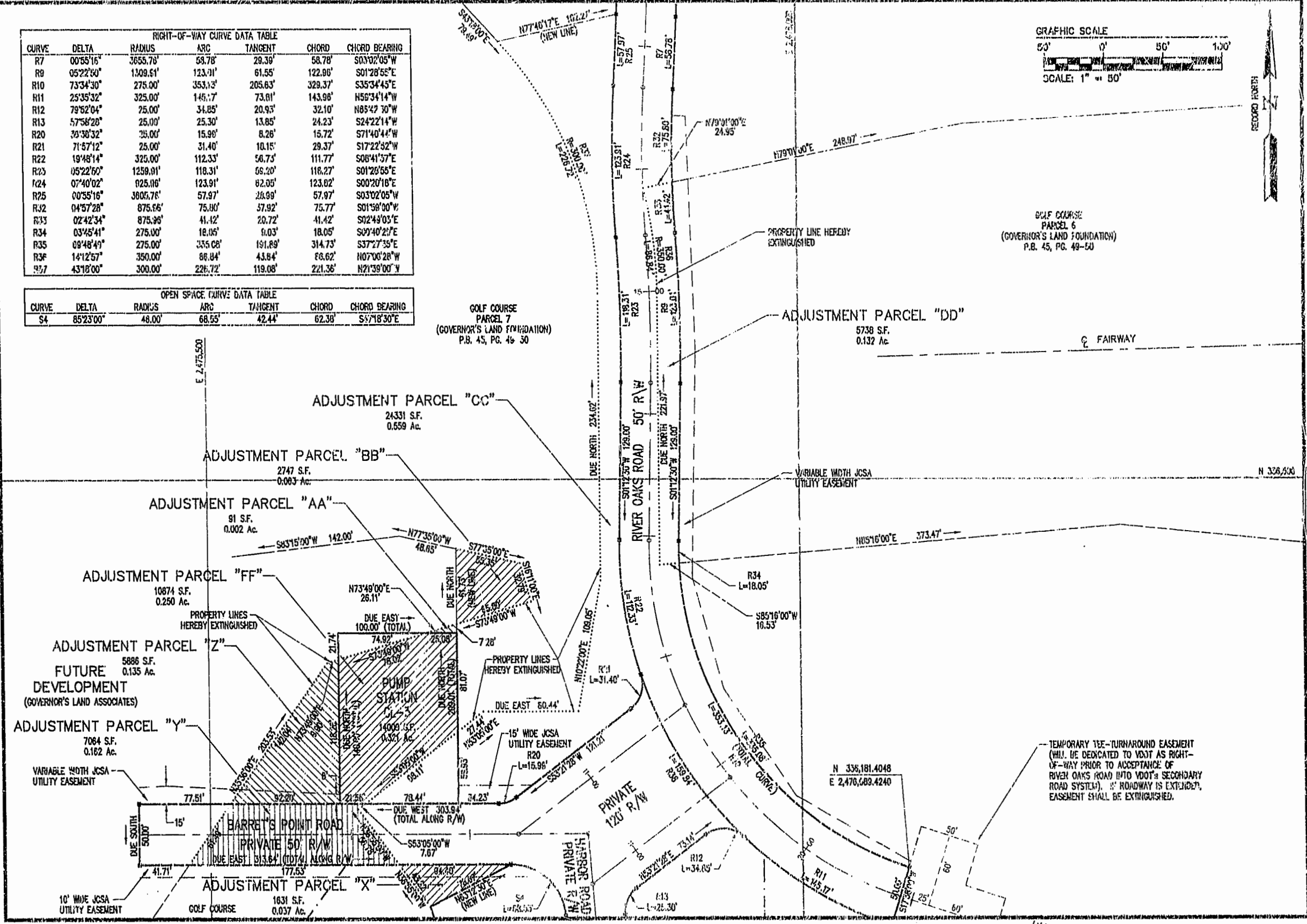
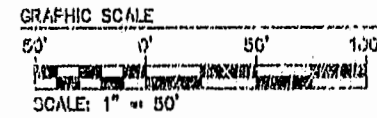


RIGHT-OF-WAY CURVE DATA TABLE						
CURVE	DELTA	RADIUS	ARC	TANGENT	CHORD	CHORD BEARING
R7	00°55'16"	3655.78'	58.78'	29.39'	58.78'	S03°02'05"W
R8	05°22'50"	1309.51'	61.55'	123.00'	123.00'	S01°28'55"E
R10	73°34'30"	275.00'	353.13'	205.63'	329.37'	S35°34'45"E
R11	25°35'32"	325.00'	145.17'	73.01'	143.98'	N59°34'14"W
R12	79°52'04"	25.00'	34.85'	20.93'	32.10'	N85°42'30"W
R13	57°58'28"	25.00'	25.30'	13.85'	24.23'	S24°22'14"W
R20	39°36'32"	25.00'	15.90'	8.26'	15.72'	S71°40'44"W
R21	71°57'12"	25.00'	31.40'	10.15'	29.37'	S17°22'32"W
R22	19°48'14"	325.00'	112.33'	58.73'	111.77'	S08°41'57"E
R23	05°22'50"	1259.01'	110.31'	68.20'	116.27'	S01°28'55"E
R24	07°40'02"	025.00'	123.91'	82.05'	123.02'	S00°20'18"E
R25	00°55'16"	3605.78'	57.97'	28.99'	57.97'	S03°02'05"W
R32	04°57'28"	875.66'	75.00'	57.92'	75.77'	S01°58'00"W
R33	02°42'34"	875.66'	41.42'	20.72'	41.42'	S02°49'03"E
R34	03°45'41"	275.00'	18.05'	9.03'	18.05'	S09°40'21"E
R35	09°48'49"	275.00'	335.08'	191.89'	314.73'	S37°27'39"E
R36	14°12'57"	350.00'	86.84'	43.84'	86.62'	N07°06'28"W
R37	43°18'00"	300.00'	226.72'	119.08'	221.36'	N21°39'00"W

OPEN SPACE CURVE DATA TABLE						
CURVE	DELTA	RADIUS	ARC	TANGENT	CHORD	CHORD BEARING
S4	85°23'00"	48.00'	68.55'	42.44'	62.38'	S57°18'30"E



8248 Olde Towne Road, Suite 1
 Williamsburg, Virginia 23188
 (804) 253-0040
 Fax (804) 220-8994

AMENDED PLAT OF
THE HARBOR AT TWO RIVERS
 THE
 GOVERNOR'S LAND
 AT
 TWO RIVERS
 JAMES CITY COUNTY
 VIRGINIA



No.	DATE	REVISION / COMMENT / NOTE	BY

Designed	Drawn
VMB	BJJ
Scale	Date
1"=50'	MAY 1995
Project No.	7173
Drawing No.	Sht. 6 of 6