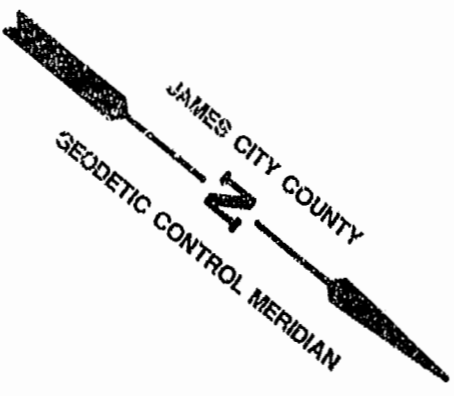
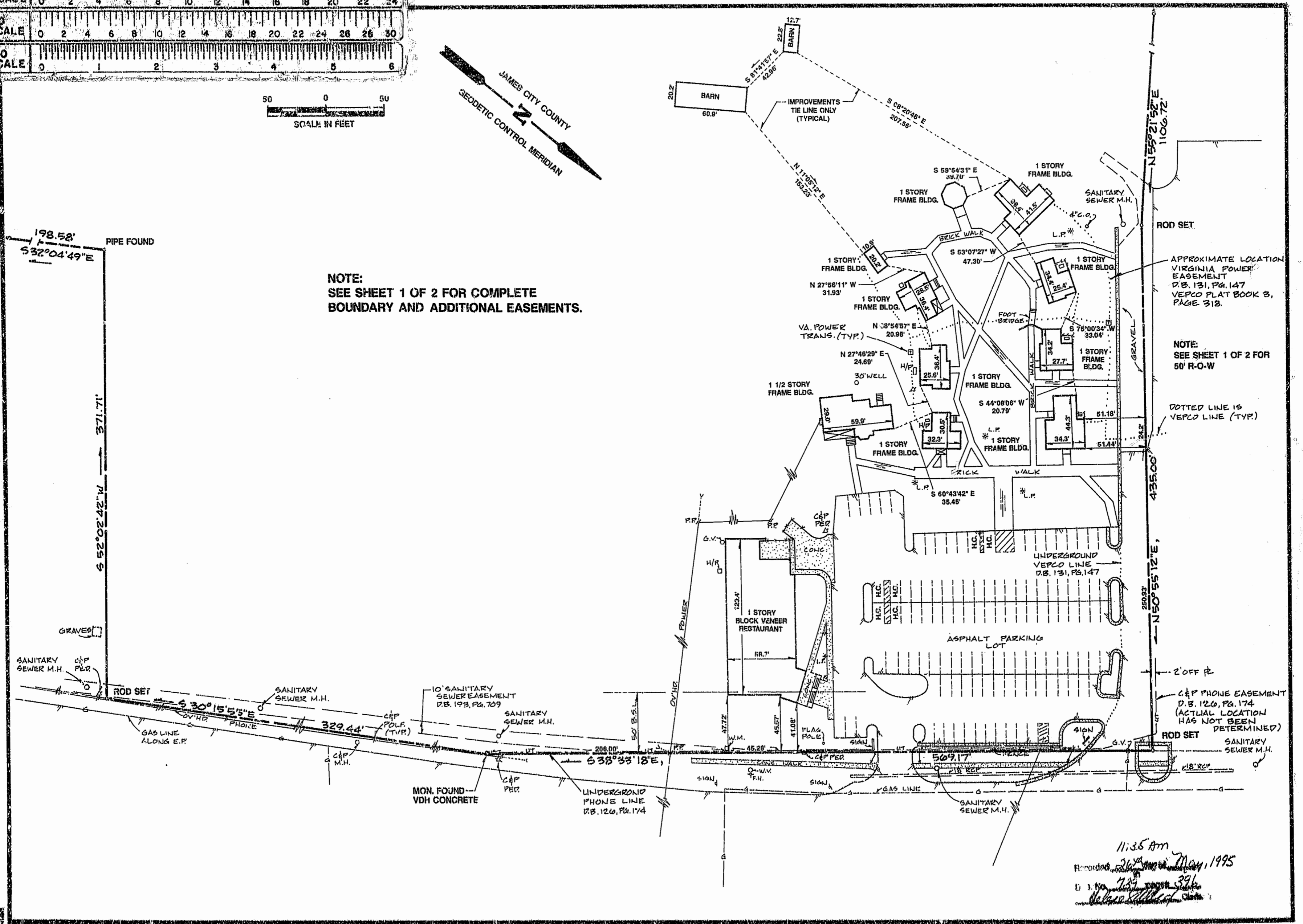


50 0 50  
SCALE IN FEET



NOTE:  
SEE SHEET 1 OF 2 FOR COMPLETE  
BOUNDARY AND ADDITIONAL EASEMENTS.



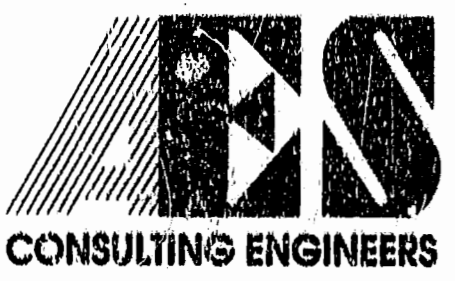
APPROXIMATE LOCATION  
VIRGINIA POWER  
EASEMENT  
D.B. 131, PG. 147  
VEPCO FLAT BOOK 3,  
PAGE 318.

NOTE:  
SEE SHEET 1 OF 2 FOR  
50' R-O-W

DOTTED LINE IS  
VEPCO LINE (TYP.)

C&P PHONE EASEMENT  
D.B. 126, PG. 174  
(ACTUAL LOCATION  
HAS NOT BEEN  
DETERMINED)

11:35 AM  
Recorded 26th May 1995  
D. J. No. 733 396  
[Signature]



5248 Olde Towne Road, Suite 1  
Williamsburg, Virginia 23188  
(804) 253-0040  
Fax (804) 220-8994

ALTA/ACSM LAND TITLE SURVEY  
A PARCEL CONTAINING 53.44 ACRES±  
OWNED BY EASTERN OREO, INC.  
POWHATAN DISTRICT JAMES CITY COUNTY VIRGINIA



No.	DATE	REVISION / COMMENT / NOTE	BY

Designed	Drawn
Scale	Date
1" = 50'	5/10/95
Project No. 8107	
Drawing No. 2 OF 2	