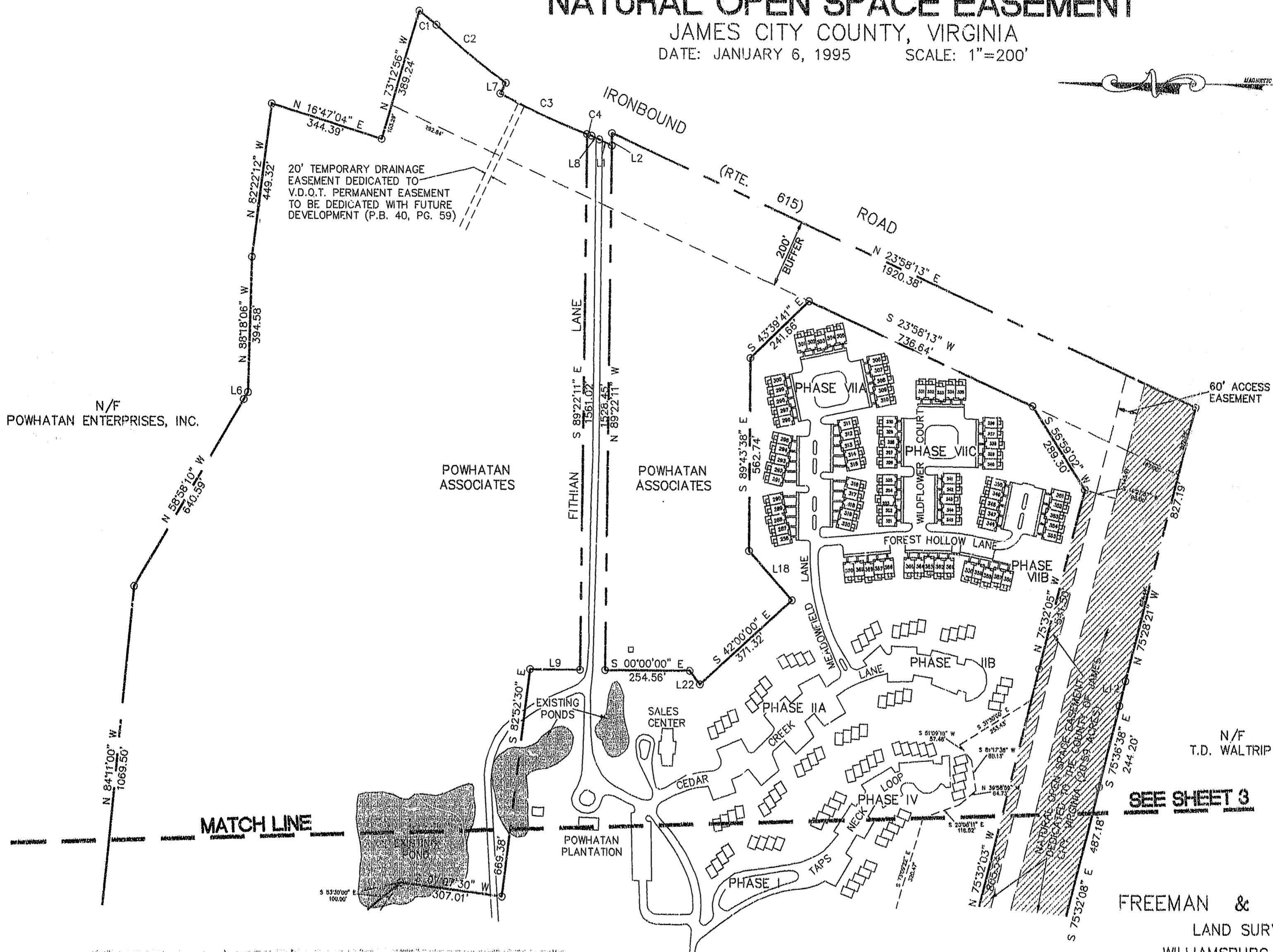


# POWHATAN PLANTATION PHASE VIIIA, VIIB, AND PLAT OF EXCHANGE OF NATURAL OPEN SPACE EASEMENT

JAMES CITY COUNTY, VIRGINIA  
DATE: JANUARY 6, 1995 SCALE: 1"=200'



N/F POWHATAN ENTERPRISES, INC.

POWHATAN ASSOCIATES

POWHATAN ASSOCIATES

60' ACCESS EASEMENT

N/F T.D. WALTRIP

**SEE SHEET 3**

FREEMAN & ASSOCIATES  
LAND SURVEYORS  
WILLIAMSBURG, VIRGINIA

PHASE I THRU VI, VIIIA, & VIIB  
108.43 TOTAL ACRES

SHEET 2 OF 3

