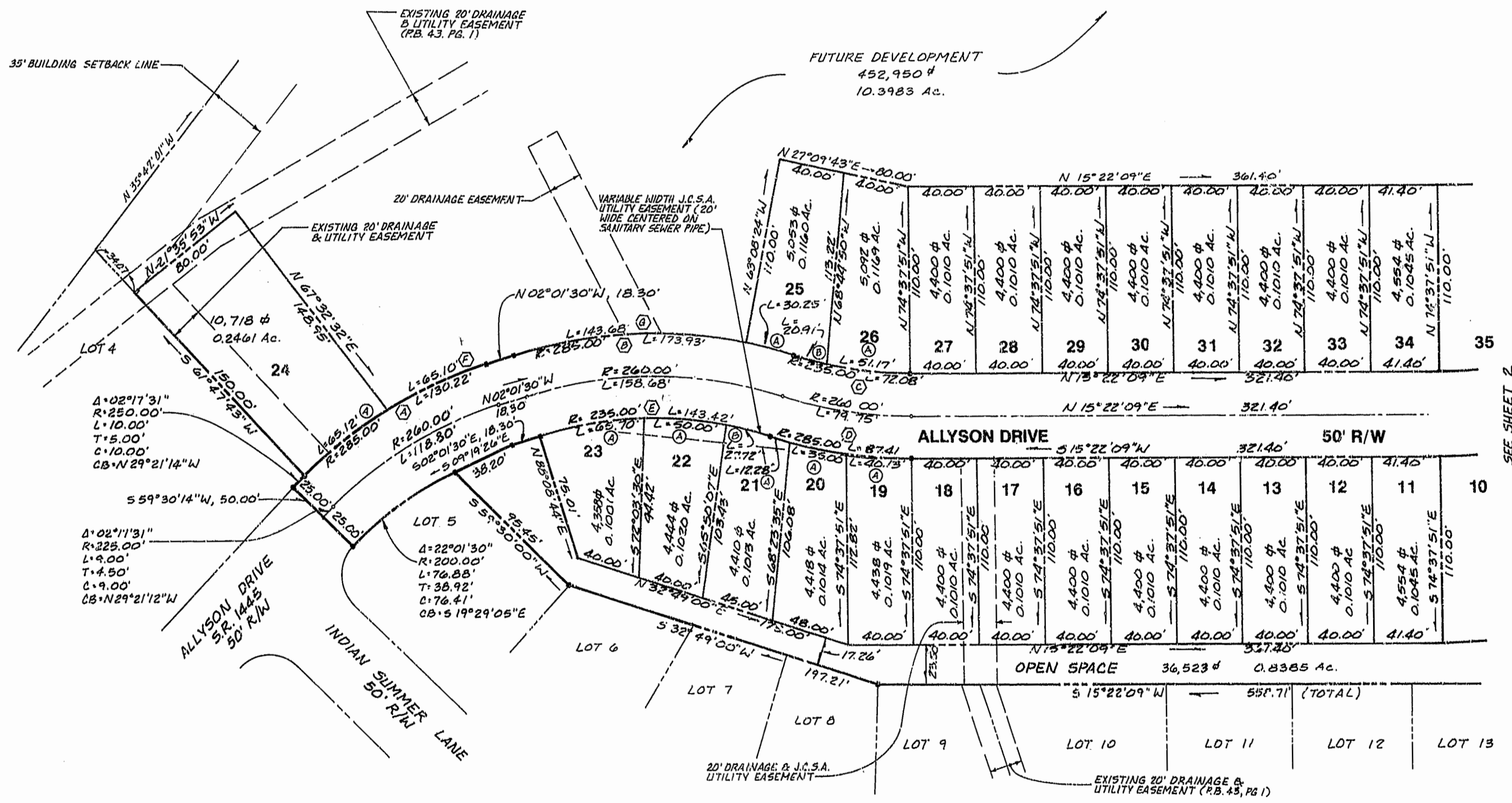
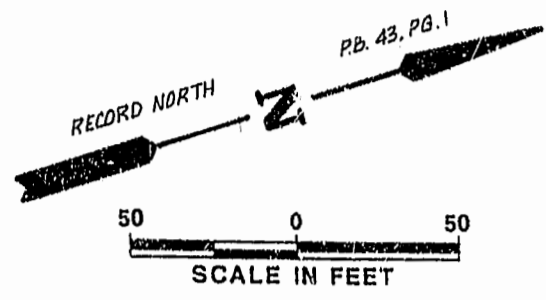
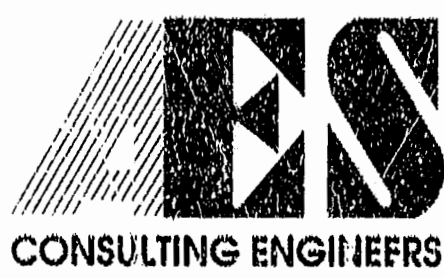


RAW CURVE DATA						LOT CURVE DATA							
MARK ()	DELTA	RADIUS	LENGTH	TANGENT	CHORD	CHORD BEARING	NO.	DELTA	RADIUS	LENGTH	TANGENT	CHORD	CHORD BEARING
A	26°10'46"	285.00'	130.22'	66.27'	129.09'	N15°08'53"W	19A	08°04'5"	285.00'	40.13'	20.10'	40.10'	N19°24'11"E
B	34°58'02"	285.00'	173.93'	89.77'	171.25'	N15°27'31"E	20A	07°02'11"	285.00'	35.00'	17.52'	34.88'	N26°57'19"E
C	17°34'24"	235.00'	72.07'	36.32'	71.80'	N24°09'20"E	21A	02°28'08"	205.00'	12.28'	6.14'	12.28'	N31°42'24"E
D	17°34'24"	285.00'	87.41'	44.05'	87.07'	S24°09'20"W	21B	08°48'30"	235.00'	27.72'	13.88'	27.70'	N29°33'47"E
E	34°58'02"	235.00'	143.42'	74.02'	141.70'	S15°27'31"W	22A	12°11'26"	235.00'	50.60'	25.00'	49.91'	N20°08'19"E
F	13°05'17"	285.00'	85.10'	32.69'	84.16'	N08°54'08"W	23A	16°01'06"	235.00'	65.70'	33.07'	65.49'	N05°59'03"E
G	28°53'06"	215.00'	143.68'	73.40'	142.15'	N12°25'03"E	24A	13°05'29"	285.00'	65.12'	32.70'	64.98'	S21°39'31"E
							25A	08°04'56"	285.00'	30.25'	15.14'	30.24'	S29°54'04"W
							25B	05°05'54"	235.00'	20.91'	10.46'	20.91'	S30°23'32"W
							26A	12°28'29"	235.00'	51.17'	25.68'	51.06'	S21°36'23"W



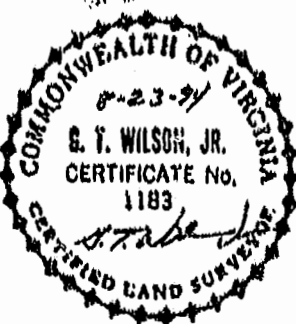
RAINTREE SECTION 2
PLAT BOOK 43, PAGE 1

SEE SHEET 2



5248 Olde Towne Road, Suite 1
Williamsburg, Virginia 23188
(804) 253-0040
Fax (804) 220-8994

PLAT OF SUBDIVISION
RAINTREE VILLAS
PHASE I, LOTS 1-35 & 59-65
OWNER/DEVELOPER: LEONARD M. EPSTEIN
POWhatan DISTRICT JAMES CITY COUNTY VIRGINIA



NO.	DATE	REVISION / COMMENT / NOTE	BY

Designed S.O.W. Scale 1"=50'

Drawn G.L.J. Date 8/8/94

Project No. 5919-5

Drawing No. 3 of 3